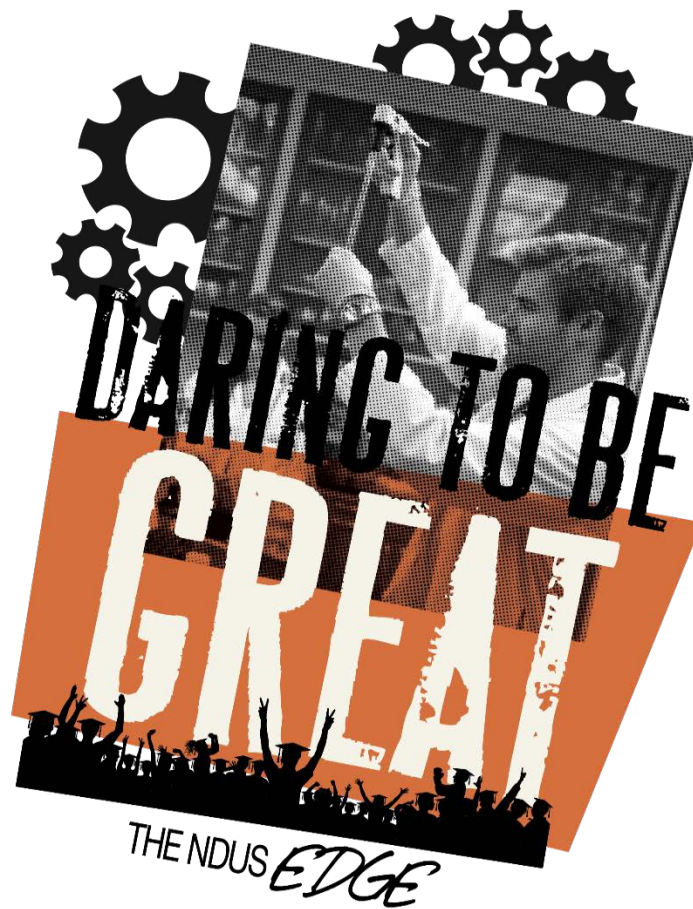

2017 Fall Enrollment Report

October 2017



Prepared for the
State Board of Higher Education

2017 FALL ENROLLMENT

PUBLISHED BY:

NORTH DAKOTA UNIVERSITY SYSTEM

**State Capitol
Bismarck, ND 58505**

Report prepared by

Jennifer Weber, Ph.D., NDUS Institutional Research

Table of Contents

North Dakota State Board of Higher Education.....	1
Institutional Abbreviations for NDUS Campuses	2
Purpose of Report	3
System Duplicated and Institutional Headcount Enrollments	4
Full Time and Part Time Headcount Enrollment.....	5
High School Students Enrolled in College Courses, Beginning Freshmen and Transfer Students, Developmental and Collaborative Course Enrollments	6
Full Time Equivalent Enrollments of Part Time and Full Time by Level of Student Based on Total Student Credit Hours.....	7
Trending Headcount, Full Time Enrolled, and FTE of Degree Credit Students.....	8
Headcount, Full Time, and FTE Trending	9
Degree Credit Headcount Enrollment by Instructional Mode.....	10
Degree Credit Headcount Enrollment by E-Learning Delivery Method	11
Undergraduate Headcount Enrollment by State.....	12
Graduate and Professional Headcount Enrollment by State	13
Headcount Enrollments for North Dakota Students by County of Residence.....	14
Unduplicated Headcount Enrollments for North Dakota Students by County of Residence	15
All Enrollments for North Dakota Students by County of Residence	16
Headcount Enrollments and Headcount by Tuition Residency Status	17
Headcount Enrollment by Age.....	18
Headcount Enrollment by Race.....	19

North Dakota State Board of Higher Education

Don Morton
Chair
Fargo

Greg Stemen
Vice Chair
Oakes

Kevin Melicher, O.D.
Member
Fargo

Nick Hacker
Member
Bismarck

Mike Ness
Member
Hazen

Kathleen Neset
Member
Tioga

Casey Ryan, M.D.
Member
Grand Forks

Birgit Pruess, Ph.D.
Faculty Adviser
Fargo

Jacob Dailey
Student Member
Fargo

Andy Wakeford
Staff Adviser
Devils Lake

Mark R. Hagerott, Ph.D.
Chancellor
North Dakota University System

Institutional Abbreviations for NDUS Campuses

BSC	Bismarck State College — Bismarck, ND 58501 (BSC is a community college that offers one four-year Bachelor's of Applied Science program achieved by completing two years of coursework beyond a two-year associate in an applied science degree.)
DCB	Dakota College at Bottineau — Bottineau, ND
DSU	Dickinson State University — Dickinson, ND
LRSC	Lake Region State College — Devils Lake, ND
MaSU	Mayville State University — Mayville, ND
MiSU	Minot State University — Minot, ND
NDSCS	North Dakota State College of Science — Wahpeton, ND
NDSU	North Dakota State University — Fargo, ND
UND	University of North Dakota — Grand Forks, ND
VCSU	Valley City State University — Valley City, ND
WSC	Williston State College — Williston, ND



Purpose of Report

To improve student access and success in North Dakota University System institutions, the State Board of Higher Education has implemented enrollment policies that better reflect the differentiated missions of research universities, regional universities, and community colleges. This report addresses the transition in policy by grouping data by institutional mission.

The North Dakota University System includes:

Two research universities:

- North Dakota State University (NDSU)
- University of North Dakota (UND)

Four regional universities:

- Dickinson State University (DSU)
- Mayville State University (MaSU)
- Minot State University (MiSU)
- Valley City State University (VCSU)

Five two-year community colleges:

- Bismarck State College (BSC)
- Dakota College of Bottineau (DCB)
- Lake Region State College (LRSC)
- North Dakota State College of Science (NDSCS)
- Williston State College (WSC)

As amended January 19, 2012, State Board of Higher Education Policy 440 states as follows,

“Each campus shall report fall and spring semester enrollments for degree credit students based on the number of students enrolled on the twentieth scheduled class day of the fall and spring semesters. "Enrolled" means: the student has registered and paid tuition and fees, made arrangements to pay or a plan for payment is in place; an extension has been granted as provided by Policy 830.1; or, the institution has other documentation the student is registered and in attendance, including, for example, documented class attendance or student access or use of a learning management system or other online services on or after the first scheduled class day of the semester.”

As required by the North Dakota State Board of Higher Education, this enrollment report includes all degree credit enrollments for all NDUS institutions and is consistent with protocols implemented by the Integrated Postsecondary Education Data System

Table 1
System Duplicated and Institutional Headcount Enrollments¹
 Fall 2017

Institution	Freshman	Sophomore	Junior	Senior	Graduate	Professional	Total
BSC	1,889	1,640	44	183			3,756
DCB	631	278					909
LRSC	1,526	446					1,972
NDSCS	1,942	1,043					2,985
WSC	753	345					1,098
Subtotal	6,741	3,752	44	183			10,720
DSU	492	243	238	452			1,425
MaSU	429	149	173	346	43		1,140
MiSU	989	552	504	911	260		3,216
VCSU	446	219	258	449	150		1,522
Subtotal	2,356	1,163	1,173	2,158	453		7,303
NDSU	2,754	2,789	2,618	3,823	2,037	337	14,358
UND	2,608	2,396	2,147	3,849	2,862	544	14,406
Subtotal	5,362	5,185	4,765	7,672	4,899	881	28,764
NDUS Total	14,459	10,100	5,982	10,013	5,352	881	46,787

Data Definitions:

¹**Headcount Enrollment** - A student counted as one enrollment in degree credit courses as of the 20th scheduled day of class.

Sources:

Campus Solutions>Student Records>Enrollment Report>Headcounts and FTE Enrollments (NDUH2SRA)

As of 09.18.2017

Table 2
Full Time and Part Time Headcount Enrollment¹
 Fall 2017

Institution	Freshman		Sophomore		Junior		Senior		Graduate		Professional		Total	
	Full Time ²	Part Time ³	Full Time	Part Time	Full Time	Part Time	Full Time	Part Time	Full Time	Part Time	Full Time	Part Time	Full Time	Part Time
BSC	1,025	864	989	651	10	34	43	140					2,067	1,689
DCB	193	438	153	125									346	563
LRSC	291	1,235	236	210									527	1,445
NDSCS	940	1,002	767	276									1,707	1,278
WSC	370	383	245	100									615	483
Subtotal	2,819	3,922	2,390	1,362	10	34	43	140					5,262	5,458
DSU	224	268	214	29	181	57	303	149					922	503
MaSU	159	270	125	24	122	51	194	152	2	41			602	538
MiSU	440	549	458	94	406	98	648	263	110	150			2,062	1,154
VCSU	181	265	182	37	189	69	282	167	12	138			846	676
Subtotal	1,004	1,352	979	184	898	275	1,427	731	124	329			4,432	2,871
NDSU	2,497	257	2,671	118	2,404	214	3,210	613	657	1,380	329	8	11,768	2,590
UND	1,806	802	2,192	204	1,890	257	2,637	1,212	1,209	1,653	541	3	10,275	4,131
Subtotal	4,303	1,059	4,863	322	4,294	471	5,847	1,825	1,866	3,033	870	11	22,043	6,721
NDUS Total	8,126	6,333	8,232	1,868	5,202	780	7,317	2,696	1,990	3,362	870	11	31,737	15,050

Data Definitions:

¹**Headcount Enrollment** - A student counted as one enrollment in degree credit courses as of the 20th scheduled day of class.

²**Full Time** – Undergraduate students enrolled in 12 or more credit hours or graduate and professional students enrolled in 9 or more credit hours (as of the 20th scheduled day of class).

³**Part Time** – Undergraduate students enrolled in less than 12 credit hours or graduate and professional students enrolled in less than 9 credit hours (as of the 20th scheduled day of class).

Sources:

Campus Solutions>Student Records>Enrollment Report>Headcounts and FTE Enrollments (NDUH2SRA)

As of 09.18.2017

Table 3
High School Students Enrolled in College Courses, Beginning Freshmen and Transfer Students, Developmental and Collaborative Course Enrollments¹
 Fall 2017

Institution	High School Students Enrolled in College Courses ¹			New Undergraduate Student Enrollments ²		Developmental Enrollments ⁵			Collaborative Enrollments ⁶		Non Collaborative Enrollments	
	Number of Course Enrollments	Headcount of High School Students Enrolled in College Courses	High School Students with more than one College Course Enrollment	Beginning Freshmen ³	Transfer ⁴	Number of Developmental Enrollments	Headcount of Students Enrolled in Developmental Courses	Students with More than One Developmental Enrollment	Collaborative Developmental Only	Collaborative Taking Degree Credit	Non Collaborative Developmental Only	Non Collaborative Developmental & Degree Credit
BSC	615	516	89	831	314	999	502	313	2	141	18	482
DCB	328	237	74	153	88	482	289	137	144	85	3	142
LRSC	1,057	741	280	214	114	257	189	66	6	352	13	170
NDSCS	1,264	714	368	737	223	974	563	265	12	27	2	549
WSC	357	289	55	306	80	269	200	69		27	2	198
Subtotal	3,621	2,497	866	2,241	819	2,981	1,743	850	164	632	38	1,541
DSU	310	219	62	194	177	174	116	47		23	2	114
MaSU	253	160	60	131	180	118	77	34		45		77
MiSU	231	181	49	373	336	99	99		1	109	2	96
VCSU	114	90	24	190	146	44	44			141		44
Subtotal	908	650	195	888	839	435	336	81	1	318	4	331
NDSU	15	9	2	2,633	673	390	390			108	2	388
UND	17	11	4	1,939	867	227	217	10		53	3	214
Subtotal	32	20	6	4,572	1,540	617	607	10		161	5	602
NDUS Total	4,561	3,167	1,067	7,701	3,198	4,033	2,686	941	165	1,111	47	2,474

Data Definitions:

¹**High School Students Enrolled in College Courses** – A high school student who enrolls in college courses. Includes both dual credit and early entry. Totals include only those students enrolled in college courses in the eleven NDUS institutions.

²**New Undergraduate Student Enrollments** – Includes both incoming freshmen and undergraduate transfer, degree seeking students for the reporting term.

³**Beginning Freshmen** - Full-time/Part-time student attending any institution for the first time as a freshman. Since part-time students are included, this result is not the same as the IPEDS first-time full-time count.

⁴**Transfer** - A student entering an institution for the first time but known to have previously attended a postsecondary institution at the same level. This student may transfer with or without credit.

⁵**Developmental Enrollments**- Basic academic skills courses designed to prepare students to complete postsecondary academic degree-credit courses. Do not count as degree credit coursework.

⁶**Collaborative Enrollments** - A student who enrolls in a course at a NDUS institution other than his/her home institution.

Sources:

Campus Solutions>Student Records>Enrollment Reports>Developmental Course Enrollments (NDU02SRY); Campus Solutions>Student Records>Enrollment Reports>High School Enrolled Students (NDUH2SRW); Campus Solutions>Student Records>Enrollment Reports>Compliance Report (NDUH2SRK)

As of 09.18.2017

Table 4
Full Time Equivalent Enrollments of Part Time and Full Time by Level of Student Based on Total Student Credit Hours¹
 Fall 2017

Institution	Freshmen			Sophomore			Junior			Senior			Graduate			Professional ⁵			Total		
	FTE of Part Time ²	FTE ³	SCH ⁴	FTE of Part Time	FTE	SCH	FTE of Part Time	FTE	SCH	FTE of Part Time	FTE	SCH	FTE of Part Time	FTE	SCH	FTE of Part Time	FTE	SCH	FTE of Part Time	FTE	SCH
BSC	267	1,298	19,467	259	1,235	18,525	12	20	302	54	93	1,389							592	2,646	39,683
DCB	129	335	5,019	41	192	2,886													169	527	7,905
LRSC	373	675	10,121	78	320	4,799													451	995	14,920
NDSCS	325	1,347	20,198	117	907	13,604													442	2,253	33,802
WSC	102	477	7,151	44	287	4,301													146	763	11,452
Subtotal	1,196	4,130	61,956	539	2,941	44,115	12	20	302	54	93	1,389							1,801	7,184	107,762
DSU	75	304	4,553	13	235	3,524	27	211	3,160	70	379	5,683							184	1,128	16,920
MaSU	78	236	3,540	11	137	2,054	22	141	2,120	67	257	3,849	11	14	162				190	784	11,725
MiSU	186	611	9,166	43	491	7,368	42	444	6,667	116	745	11,181	59	175	2,104				445	2,467	36,485
VCSU	90	265	3,976	16	199	2,985	34	223	3,345	70	342	5,127	47	57	684				257	1,086	16,117
Subtotal	429	1,416	21,235	83	1,062	15,931	124	1,019	15,292	323	1,723	25,840	117	246	2,950				1,075	5,466	81,247
NDSU	74	2,619	39,282	55	2,781	41,712	97	2,540	38,104	251	3,437	51,550	481	1,070	12,841	8	337	5,676	966	12,784	189,165
UND	232	2,069	31,032	100	2,318	34,775	115	2,038	30,575	514	3,148	47,222	634	1,847	22,162	3	544	10,220	1,598	11,964	175,986
Subtotal	306	4,688	70,314	155	5,099	76,487	212	4,579	68,679	765	6,585	98,772	1,115	2,917	35,003	11	881	15,896	2,564	24,748	365,151
NDUS Total	1,931	10,234	153,504	777	9,102	136,533	348	5,618	84,273	1,142	8,400	126,001	1,231	3,163	37,953	11	881	15,896	5,440	37,398	554,160

Methodology Note: Numbers have been rounded to the nearest whole number

Data Definitions:

¹**Full Time Equivalent Enrollments Based on Total Student Credit Hours** - Student credit hours accumulated at the undergraduate level divided by 15 plus student credit hours accumulated at the graduate level divided by 12. Every professional student is counted as one FTE.

²**FTE of Part Time** - Full time equivalent enrollment of students enrolled in less than twelve credit hours as of the 20th day of classes.

³**FTE** - Full Time Equivalent based on total student credit hours.

⁴**SCH** - Scheduled Credit Hours. The sum of all course credit hours in which students are enrolled as of the 20th day of classes.

⁵**Professional** - A student who has completed a baccalaureate degree and is enrolled in a post-baccalaureate program leading to a professional degree in law, medicine, or pharmacy.

Sources:

Campus Solutions>Student Records>Enrollment Report>Headcounts and FTE Enrollments (NDUH2SRA)

As of 09.18.2017

Table 5
Trending Headcount, Full Time Enrolled, and FTE of Degree Credit Students¹
 Fall 2017

Institution	2013			2014			2015			2016			2017		
	HC	FT	FTE	HC	FT	FTE	HC	FT	FTE	HC	FT	FTE	HC	FT	FTE
BSC	4,062	2,365	2,955	4,002	2,303	2,909	4,078	2,281	2,912	3,976	2,241	2,860	3,756	2,067	2,646
DCB	793	367	502	753	398	518	692	341	459	811	344	490	909	346	527
LRSC	1,898	486	943	1,988	530	978	1,918	535	981	1,947	501	971	1,972	527	995
NDSCS	3,168	1,712	2,295	3,033	1,706	2,272	3,123	1,694	2,305	3,003	1,753	2,298	2,985	1,707	2,253
WSC	909	430	593	883	421	579	1,038	603	738	1,039	620	756	1,098	615	763
Sub Total	10,830	5,360	7,288	10,659	5,358	7,256	10,849	5,454	7,395	10,776	5,459	7,375	10,720	5,262	7,184
DSU	1,449	1,018	1,201	1,479	980	1,176	1,317	896	1,070	1,386	912	1,114	1,425	922	1,128
MaSU	1,065	587	749	1,081	635	798	1,110	638	796	1,130	613	782	1,140	602	784
MiSU	3,533	2,273	2,710	3,410	2,191	2,600	3,348	2,128	2,570	3,412	2,132	2,592	3,216	2,062	2,467
VCSU	1,366	761	975	1,378	783	990	1,422	789	1,031	1,452	802	1,044	1,522	846	1,086
Sub Total	7,413	4,639	5,635	7,348	4,589	5,564	7,197	4,451	5,467	7,380	4,459	5,532	7,303	4,432	5,466
NDSU	14,629	11,798	12,797	14,747	11,917	12,934	14,516	11,684	12,834	14,432	11,680	12,783	14,358	11,768	12,784
UND	15,143	11,160	12,606	14,906	10,786	12,420	14,951	10,867	12,455	14,648	10,576	12,182	14,406	10,275	11,964
Sub Total	29,772	22,958	25,403	29,653	22,703	25,354	29,467	22,551	25,289	29,080	22,256	24,965	28,764	22,043	24,748
NDUS Total	48,015	32,957	38,326	47,660	32,650	38,174	47,513	32,456	38,151	47,236	32,174	37,872	46,787	31,737	37,398

Data Definitions:

¹**Degree Credit** - All institutional activities that can be applied toward college degree or credit based developmental or remedial courses taken by a degree-seeking student as reported to IPEDS.

²**HC** - Headcount Enrollment

³**FT** - Full time student.

⁴**FTE** - Full Time Equivalent based on total student credit hours

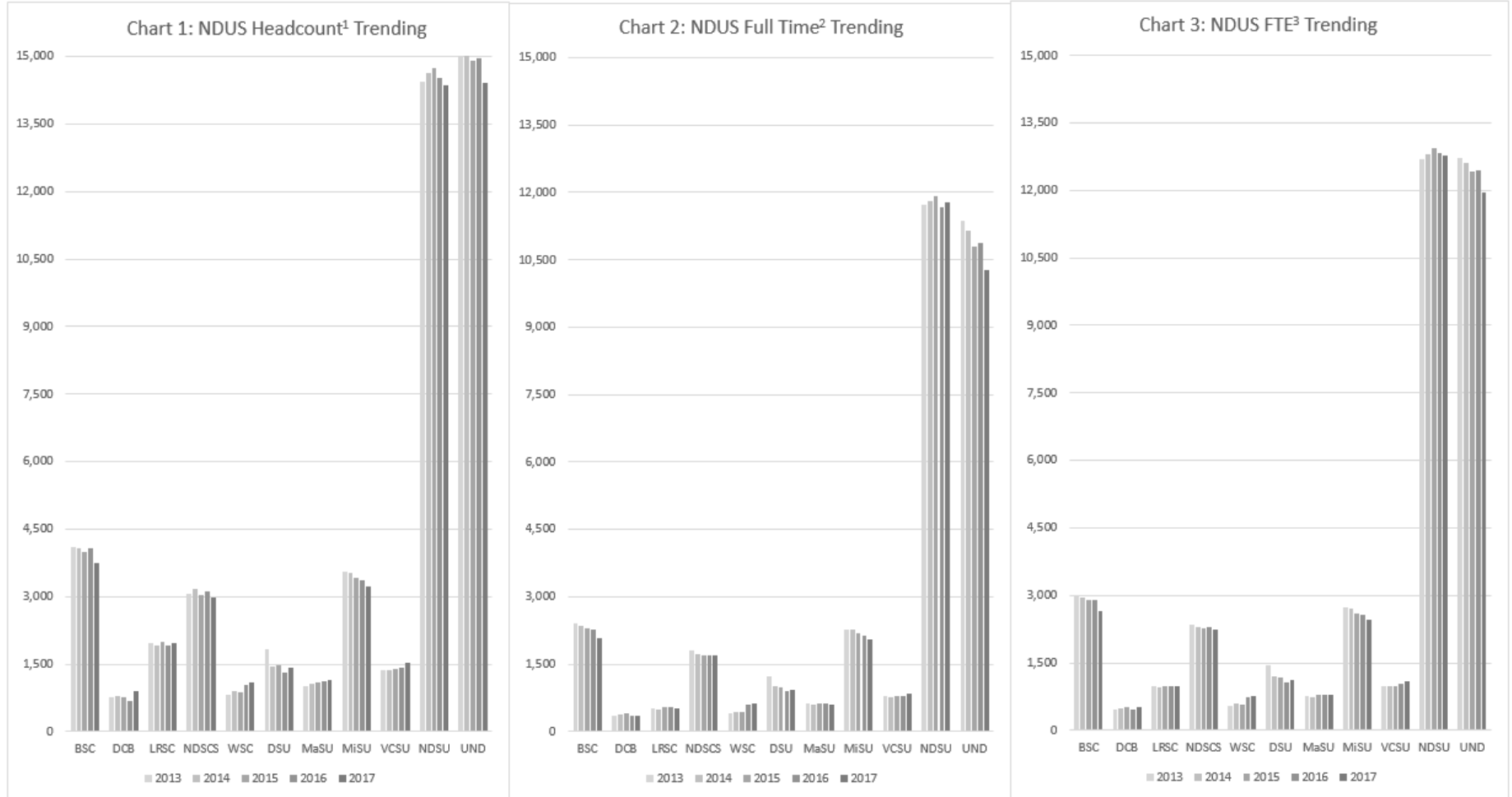
Sources:

Campus Solutions>Student Records>Enrollment Report>Headcounts and FTE Enrollments (NDUH2SRA)

NDUS Fall 2015 Enrollment Report: Table 5

As of 09.18.2017

Charts 1, 2, 3
Headcount, Full Time, and FTE Trending
 Fall 2013 to Fall 2017



Data Definitions:

Headcount Enrollment - A student counted as one enrollment in degree credit courses at his/her home campus as of the 20th scheduled class day.

Full Time - Undergraduate students enrolled in 12 or more credit hours or graduate and professional students enrolled in 9 or more credit hours (as of the 20th scheduled day of class).

FTE- Full Time Equivalent based on total student credit hours

Sources: Trending data charts derived from Table 5.

As of 09.18.2017

Table 6
Degree Credit¹ Headcount Enrollment² by Instructional Mode
 Fall 2017

Institution	Distance Education (DE) ³				Unduplicated Campus DE Total	Face-to-face Campus Total	Total Headcount
	Face to Face ⁴ Off Campus	Independent Study ⁵	E-Learn ⁶	Duplicated ⁷ Distance Ed Total			
BSC	478	8	1,921	2,407	2,373	2,130	3,756
DCB	187		513	700	688	426	909
LRSC	978		823	1,801	1,689	464	1,972
NDSCS	1,194		1,030	2,224	1,948	1,537	2,985
WSC	117		860	977	975	640	1,098
Subtotal	2,954	8	5,147	8,109	7,673	5,197	10,720
DSU	52	14	561	627	578	1,104	1,425
MaSU	52	4	708	764	735	521	1,140
MiSU	516	25	1,154	1,695	1,589	2,218	3,216
VCSU	266		907	1,173	1,101	824	1,522
Subtotal	886	43	3,330	4,259	4,003	4,667	7,303
NDSU	294		5,066	5,360	5,265	13,591	14,358
UND	475	5	5,749	6,229	6,155	10,869	14,406
Subtotal	769	5	10,815	11,589	11,420	24,460	28,764
NDUS Total	4,609	56	19,292	23,957	23,096	34,324	46,787
Percentage					49.4%	73.4%	100.0%

Methodology Note: Report NDUH2SRO is used in reporting as it includes ONLY degree credit coursework. Report NDUH2SRZ includes non-credit coursework, and thus is not used.

Data Definitions:

¹**Degree Credit** - Instructional activities associated with the amount of instructor/student contact time that could be applied toward a college degree or developmental/remedial courses taken by a degree-seeking student as reported to IPEDS.

²**Headcount Enrollment** - A student counted as one enrollment in degree credit courses at his/her home campus as of the 20th scheduled class day.

³**Distance Education** - courses where a student is not located in a traditional face-to-face classroom on his/her home institution. Includes face-to-face off campus, correspondence, interactive video network, synchronous and asynchronous internet.

⁴**Face-to-face Off Campus** - A classroom environment where the instructor and students are physically located in the same place in an off campus location.

⁵**Independent Study** - A correspondence course in which all communications between instructor and student is accomplished through the mail, email or fax.

⁶**E-Learn** - Instruction in an electronic format via the internet. Includes synchronous and asynchronous internet, and interactive video network (IVN).

⁷**Duplicated** - An enrollment count in which an individual student may be counted more than once because they are enrolled in more than one medium or more than one campus.

Sources: Campus Solutions>Student Records>Enrollment Report>Degr Crdt H/C by Category (NDUH2SRO)

As of 09.18.2017

Table 7
Degree Credit¹ Headcount Enrollment² by E-Learning³ Delivery Method
 Fall 2017

Institution	Interactive Video (IVN)⁴	Synchronous Internet⁵	Asynchronous Internet⁶	Combo⁷	Duplicated Total	Unduplicated Total
BSC	123	32	1,802		1,957	1,921
DCB	216		352	1	569	513
LRSC	127		741		868	823
NDSCS	128		667	362	1,157	1,030
WSC	106		603	312	1,021	860
Subtotal	700	32	4,165	675	5,572	5,147
DSU	76	6	531		613	561
MaSU	126		638	19	783	708
MiSU	63		1,120		1,183	1,154
VCSU			907		907	907
Subtotal	265	6	3,196	19	3,486	3,330
NDSU	60	60	3,580	1,675	5,375	5,066
UND		812	4,473	806	6,091	5,749
Subtotal	60	872	8,053	2,481	11,466	10,815
NDUS Total	1,025	910	15,414	3,175	20,524	19,292

Data Definitions:

¹**Degree Credit** - Instructional activities associated with the amount of instructor/student contact time that could be applied toward a college degree or developmental/remedial courses taken by a degree-seeking student as reported to IPEDS.

²**Headcount Enrollment** - A student counted as one enrollment in degree credit courses at his/her home campus as of the 20th scheduled class day.

³**E-Learning** - Instruction in an electronic format via the internet. Includes synchronous and asynchronous internet, and interactive video network (IVN).

⁴**Interactive Video** - Two way video system in which the participants can synchronously interact.

⁵**Synchronous Internet** - Internet based class where instructor and students are online at the same time in order to interact.

⁶**Asynchronous Internet** - Internet based class where instructor and students are not online at the same time.

⁷**Combo** - a course that uses a combination of both traditional face-to-face and e-learning.

Sources:

Campus Solutions> Student Records> Enrollment Reports> E-Lrn Degr H/C by dlrvy mthd (NDU02SRQ)

As of 09.18.2017

Table 8
Undergraduate Headcount Enrollment by State
Fall 2017

State	Two Year Colleges					Regional Universities				Research Universities		NDUS Headcount Enrollment	NDUS Unduplicated Headcount
	BSC	DCB	LRSC	NDESCS	WSC	DSU	MASU	MISU	VCSU	NDSU	UND		
Alabama	4			1		2	1	3			19	30	30
Alaska	4	2		3		3	4	4	16	2	28	66	66
Arizona	20	2	3	2	5	8	5	27	13	11	73	169	167
Arkansas	12			1				4		2	6	25	25
California	36	5	10	3	9	42	42	109	39	51	260	606	593
Colorado	16	6	2		7	3	9	11	11	24	137	226	222
Connecticut	2		1	1		1	1	2	1	3	18	30	29
Delaware	1	1								1	2	5	5
District of Columbia	1										3	4	4
Florida	35	24	2	11	2	4	13	31	6	18	53	199	198
Georgia	14	7	1	2	1	2	8	6	8	6	34	89	87
Hawaii	3	4	7	3		1	7	4	5	5	26	65	63
Idaho	8	1		1	3	5	4	9	5		24	60	60
Illinois	25		5	2		1	6	18	9	31	142	239	233
Indiana	7	7	1	1		1	2	4		5	33	61	60
Iowa	3		2			1	3		1	28	43	81	79
Kansas	2	1	2				2	2		11	33	53	50
Kentucky	7	5		1				1		2	17	33	32
Louisiana	4	1	2	1	1		4	1			17	31	29
Maine	3				1			3	1		5	13	12
Maryland	8	2		4			3	6	1	8	28	60	60
Massachusetts	9						1		1	3	28	42	42
Michigan	26	10		2	1	1	5	7	3	7	73	135	133
Minnesota	68	5	187	716	11	10	189	72	161	5,925	3,993	11,337	10,997
Mississippi	4		1	2	1						6	14	13
Missouri	15	2	3	1		1	4	4	4	13	55	102	100
Montana	54	9	8	39	104	125	2	54	9	35	79	518	509
Nebraska	12	2		2			5	2	1	20	35	79	79
Nevada	9	1	2	1	9	9	4	7	1	8	21	72	71
New Hampshire	5							4		1	15	25	25
New Jersey	3	3			2		2	3	4	2	45	64	64
New Mexico	7							3			19	29	29
New York	41		4	2	1	2	6	5	5	1	56	123	121
North Carolina	11	2		1	1	2	3	6	1	2	38	67	66
NORTH DAKOTA	3,031	723	1,647	2,050	885	1,058	680	2,196	901	5,186	4,324	22,681	21,846
Ohio	5	5	1	2		3	1	6	2	4	22	51	50
Oklahoma	30		2	1	1	1	2	2	4		18	61	58
Oregon	4	2	3	1	3	1	2	14	4	2	26	62	59
Pennsylvania	14	2	2	1	3	1	4	4	6	3	52	92	90
Rhode Island	3					1			1		7	12	12
South Carolina	6		1	1				1	1	1	17	28	28
South Dakota	34	1	9	68	5	25	3	11	12	185	129	482	469
Tennessee	6	3		2		1		1	1	2	11	27	27
Texas	27	8	7	5	8	15	18	20	14	11	119	252	241
Utah	21	5	3		1	6	5	6			22	69	68
Vermont	1								1		7	9	9
Virginia	16		3	5	1		1	6	2	9	39	82	80
Washington	25	14	5	2	1	6	11	27	6	14	147	258	254
West Virginia	7							1			5	13	13
Wisconsin	18	1	6	30	2	2	5	9	6	174	219	472	466
Wyoming	16	3	1	2	3	29	4	8	78	8	56	208	197
APO ¹ AE/AP	5			2		1	1	1	1		15	26	25
Canada	2	26	21	2	18	8	10	143	14	14	71	329	324
Guam							1				1	2	1
Puerto Rico		1									1	2	2
Virgin Islands											2	2	2
Other International	6	12	18	7	7	43	14	87	11	144	226	575	570
Unknown		1		1	1			1	1	2		7	6
Campus Totals	3,756	909	1,972	2,985	1,098	1,425	1,097	2,956	1,372	11,984	11,000	40,554	39,250

Methodology Note: Home state reported by student. As of 09.18.2017

Data Definitions:

¹APO AE/AP – A military post office address.

Sources: Campus Solutions>Student Records>Enrollment Report> Enroll total by State/County (NDUH2SRG); Unduplicated numbers determined using system combined csv "F" file: Campus Solutions> Student Records> Student Enroll by State/County (NDUS2SRF)

Table 9
Graduate¹ and Professional² Headcount Enrollment by State
 Fall 2017

State	Regional Universities				Research Universities		NDUS Totals	NDUS Unduplicated Total
	DSU	MASU	MISU	VCSU	NDSU	UND		
Alabama					3	14	17	17
Alaska				1	2	10	13	13
Arizona			1		4	28	33	33
Arkansas					5	4	9	9
California			13		17	83	113	113
Colorado			1		11	40	52	52
Connecticut				2	5	2	9	9
Delaware						3	3	3
District of Columbia					1	1	2	2
Florida			5		8	38	51	51
Georgia			2	1	1	14	18	18
Hawaii					2	5	7	7
Idaho					2	14	16	16
Illinois			3		13	34	50	50
Indiana			1		6	8	15	15
Iowa			4	1	30	24	59	59
Kansas			2		18	6	26	26
Kentucky					2	5	7	7
Louisiana			1		1	11	13	13
Maine					1	2	3	3
Maryland			3		5	27	35	35
Massachusetts					5	15	20	20
Michigan			5		8	27	40	40
Minnesota		2	4	15	494	622	1,137	1,137
Mississippi			1		1	2	4	4
Missouri			2		16	19	37	37
Montana			5	3	11	41	60	60
Nebraska			1		11	12	24	24
Nevada					2	6	8	8
New Hampshire			1		1		2	2
New Jersey			1	4	2	20	27	27
New Mexico					1	9	10	10
New York					7	30	37	37
North Carolina			1		13	26	40	40
NORTH DAKOTA		40	127	108	1,128	1,544	2,947	2,945
Ohio			3		10	21	34	34
Oklahoma					16	8	24	24
Oregon			3	1	8	18	30	30
Pennsylvania			3	2	8	30	43	43
Rhode Island						2	2	2
South Carolina			1	3	2	4	10	10
South Dakota			1	1	39	74	115	115
Tennessee			1		2	11	14	14
Texas			3		20	50	73	73
Utah			1			11	12	12
Vermont						2	2	2
Virginia			3	1	3	35	42	42
Washington			4	1	13	41	59	59
West Virginia						2	2	2
Wisconsin			6	2	32	48	88	88
Wyoming			4	4	1	32	41	41
APO ³ AE/AP					2	4	6	6
Canada			37		3	89	129	129
Guam						1	1	1
Puerto Rico					2	1	3	3
Virgin Islands					1		1	1
Other International		1	6		374	176	557	557
Unknown					1		1	1
Campus Totals	0	43	260	150	2,374	3,406	6,233	6,231

Data Definitions:

¹**Graduate** - A student who holds a bachelor's degree or first professional degree, or equivalent, and is enrolled in a graduate degree program.

²**Professional** - A student who has completed a baccalaureate degree and is enrolled in a post-baccalaureate program leading to a professional degree in law, medicine, or pharmacy.

³**APO AE/AP** - A military post office address

Sources:

Campus Solutions>Student Records>Enrollment Report> Enroll total by State/County (NDUH2SRG); Unduplicated numbers determined using system combined csv "F" file: Campus Solutions> Student Records> Student Enroll by State/County (NDUS2SRF)

As of 09.18.2017

Table 10
Headcount Enrollments¹ for North Dakota Students by County of Residence
 Fall 2017

County	Two Year Colleges					Regional Universities				Research Universities		Total	NDUS Unduplicated Total
	BSC	DCB	LRSC	NDCS	WSC	DSU	MASU	MISU	VCSU	NDSU	UND		
Adams	3	1			7	11	1		2	14	8	47	45
Barnes	5	19	12	21		1	8	2	225	69	30	392	373
Benson	7	11	53	7	1		9	6	11	26	23	154	150
Billings	2			1		7				2		12	12
Bottineau	20	78	7	10		2	5	37	7	29	33	228	223
Bowman	18		1	12	8	35		2	2	25	18	121	120
Burke	2	9	1	1	32	1		11		6	8	71	66
Burleigh	1,464	12	46	56	6	132	20	132	54	605	506	3,033	2,906
Cass	38	12	64	977	4	13	71	41	189	3,492	764	5,665	5,514
Cavalier	6	1	33	1			12	1	7	28	32	121	118
Dickey	7	4	1	51				2	29	71	12	177	170
Divide	5	2			24	2		6	1	4	2	46	42
Dunn	28		2	2	16	35	3	1	1	17	8	113	99
Eddy	3		37	2			4		9	27	9	91	90
Emmons	59	1	9	16		4	2	4	10	39	11	155	143
Foster	12	5	60	9		2	6	4	11	45	19	173	170
Golden Valley	6		1	3		21		3	2	8	7	51	49
Grand Forks	9	4	499	35	2	2	141	12	38	159	2,868	3,769	3,668
Grant	26	1	1	1	3	9	1	1	2	10	3	58	56
Griggs	8	1	20	2		1	7	1	11	12	12	75	71
Hettinger	28	5			8	29	1		1	15	4	91	83
Kidder	20		19	2		2			4	15	8	70	70
Lamoure	5	36	5	14	1	1	3	1	19	26	13	124	121
Logan	11	1	15	3		4			5	16	3	58	58
McHenry	18	39	33	9		2	5	53	7	31	19	216	208
McIntosh	34	3	5	6		1		1	2	31	7	90	87
McKenzie	23	6	2	3	62	11	2	12	6	22	38	187	179
McLean	130	37	4	13	4	4	2	28	8	44	28	302	287
Mercer	101	5	21	18	30	11	6	13	14	55	45	319	307
Morton	539	1	14	18	5	67	13	43	21	172	105	998	949
Mountrail	16	17	6	6	37	9	4	36	4	30	27	192	184
Nelson	1	1	46	6			5	2	7	11	19	98	97
Oliver	17	1	1			2	2			4	4	31	29
Pembina	1		48	16			32	1	10	40	55	203	187
Pierce	11	51	7	5			2	13	4	20	16	129	128
Ramsey	9	4	273	14	1		33	9	18	53	92	506	493
Ransom	4	4	2	51			7		28	53	23	172	164
Renville	6	33		7				37	2	24	15	124	122
Richland	7	2	6	331		2	15	2	31	162	91	649	632
Rolette	7	64	24	3			6	19	13	44	73	253	248
Sargent	1	3	3	79		1	4		17	47	18	173	170
Sheridan	14	5						4	1	5	3	32	31
Sioux	6					1		2	2	2	1	14	13
Slope	2	1		1		5	1			1	1	12	12
Stark	115	5	2	21	5	599	8	13	7	116	103	994	967
Steele	4		5	6			12		9	15	8	59	59
Stutsman	43	26	22	108	1	2	2	10	72	107	80	473	449
Towner	7	2	34	1		1	2	2	3	14	9	75	73
Trail			17	21		2	176	1	11	82	68	378	372
Walsh		3	102	9			50	3	12	64	110	353	333
Ward	92	180	32	51	32	8	9	1,692	21	184	277	2,578	2,506
Wells	15	1	38	3			3	6	9	34	15	124	121
Williams	16	25	14	17	596	16	25	54	30	86	115	994	959
Not Indicated		1		1						1	2	5	5
Grand Total	3,031	723	1,647	2,050	885	1,058	720	2,323	1,009	6,314	5,868	25,628	24,788

Methodology Note: County of Residence reported by student.

Data Definitions:

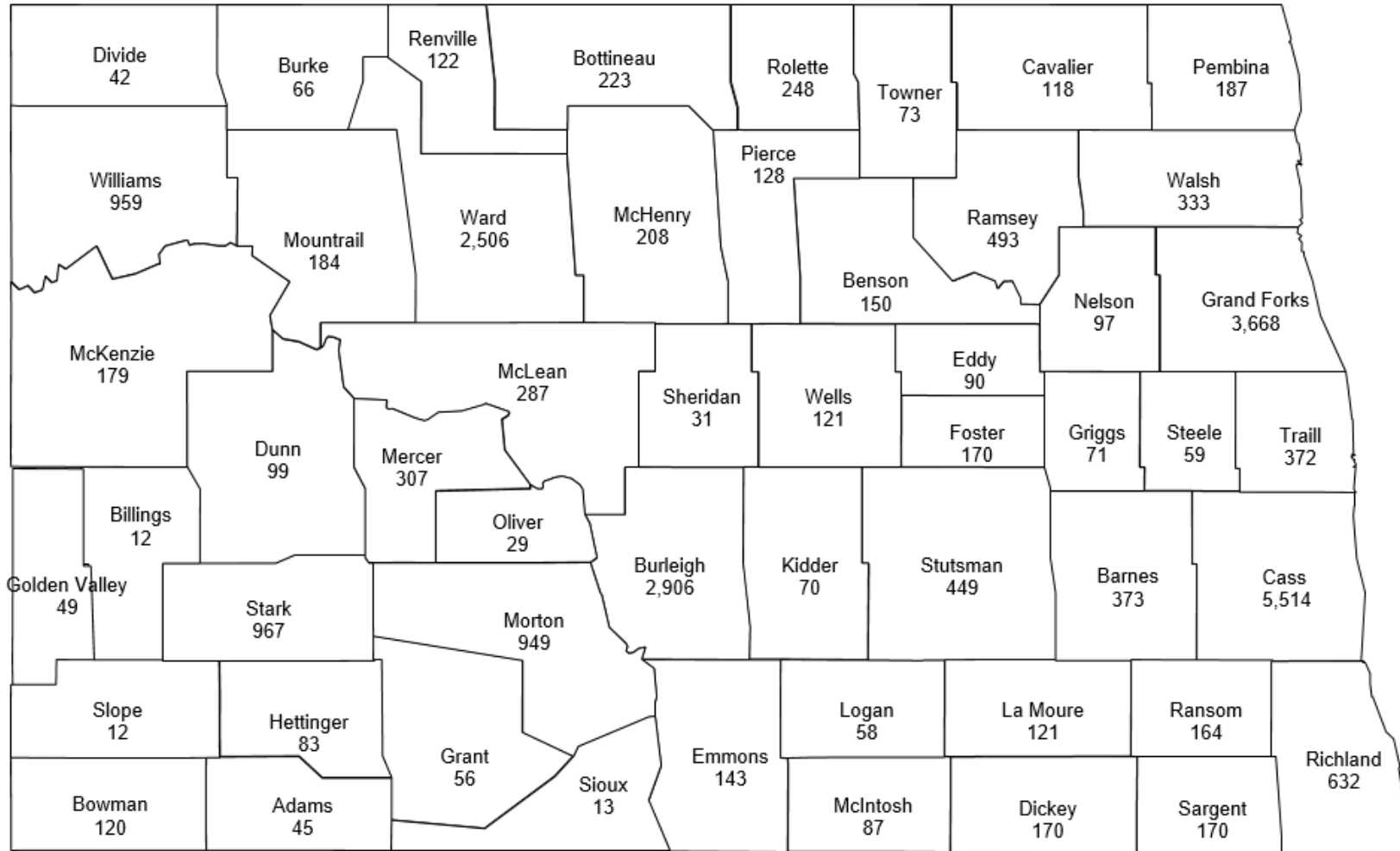
¹**Headcount Enrollment** - A student counted as one enrollment in degree credit courses as of the 20th scheduled day of class.

Sources:

Campus Solutions>Student Records>Enrollment Report> Enroll total by State/County (NDUH2SRG); Unduplicated numbers determined using system combined csv "F" file: Campus Solutions> Student Records> Student Enroll by State/County (NDUS2SRF).

As of 09.18.2017

Figure 1
Unduplicated Headcount Enrollments¹ for North Dakota Students by County of Residence
 Fall 2017



Total unduplicated headcount = 24,788 Note: County of Residence reported by student.

¹**Unduplicated headcount enrollment** - A student counted as one enrollment in degree credit courses as of the 20th scheduled class day.

Source: Unduplicated numbers determined using system combined csv "F" file: Campus Solutions> Student Records> Student Enroll by State/County (NDUS2SRF). As of 09.18.2017

Table 11
All Enrollments¹ for North Dakota Students by County of Residence
 Fall 2013 through Fall 2017

ND County	2013	2014	2015	2016	2017	ND County
Adams	47	57	56	45	47	Adams
Barnes	416	409	424	425	392	Barnes
Benson	160	176	158	162	154	Benson
Billings	9	9	4	8	12	Billings
Bottineau	306	260	233	242	228	Bottineau
Bowman	118	117	113	130	121	Bowman
Burke	67	58	59	63	71	Burke
Burleigh	2,882	2,900	2,967	3,065	3,033	Burleigh
Cass	5,790	5,716	5,829	5,748	5,665	Cass
Cavalier	160	133	129	123	121	Cavalier
Dickey	164	148	159	165	177	Dickey
Divide	53	57	55	54	46	Divide
Dunn	91	91	99	114	113	Dunn
Eddy	89	82	96	90	91	Eddy
Emmons	170	188	164	163	155	Emmons
Foster	147	155	161	169	173	Foster
Golden Valley	58	56	42	53	51	Golden Valley
Grand Forks	4,419	4,118	4,230	3,983	3,769	Grand Forks
Grant	59	70	59	61	58	Grant
Griggs	89	75	80	83	75	Griggs
Hettinger	86	90	94	94	91	Hettinger
Kidder	82	81	69	63	70	Kidder
LaMoure	124	110	107	126	124	LaMoure
Logan	65	91	67	47	58	Logan
McHenry	266	237	208	202	216	McHenry
McIntosh	87	107	101	100	90	McIntosh
McKenzie	116	132	132	166	187	McKenzie
McLean	262	270	267	284	302	McLean
Mercer	317	326	305	307	319	Mercer
Morton	993	991	1,019	1,041	998	Morton
Mountrail	188	165	163	192	192	Mountrail
Nelson	96	97	97	105	98	Nelson
Oliver	41	33	38	24	31	Oliver
Pembina	206	216	206	193	203	Pembina
Pierce	171	159	142	166	129	Pierce
Ramsey	596	566	536	537	506	Ramsey
Ransom	160	168	182	187	172	Ransom
Renville	95	103	94	110	124	Renville
Richland	717	738	707	651	649	Richland
Rolette	242	235	203	278	253	Rolette
Sargent	205	194	174	183	173	Sargent
Sheridan	39	34	31	40	32	Sheridan
Sioux	26	24	26	22	14	Sioux
Slope	8	7	10	10	12	Slope
Stark	885	995	986	986	994	Stark
Steele	62	67	58	65	59	Steele
Stutsman	517	495	494	478	473	Stutsman
Towner	87	72	72	74	75	Towner
Trail	363	359	372	396	378	Trail
Walsh	401	388	379	337	353	Walsh
Ward	2,647	2,574	2,482	2,633	2,578	Ward
Wells	151	147	121	141	124	Wells
Williams	768	799	993	968	994	Williams
Unspecified	47	5		5	5	Unspecified
Total	26,410	25,950	26,052	26,157	25,628	Total
Percent annual change	-1.55%	-1.74%	0.39%	0.40%	-2.02%	

Methodology Note: County of Residence reported by student

Data Definition: ¹Enrollments – A student counted as one enrollment in degree credit courses at each campus attending.

Sources:

Campus Solutions>Student Records>Enrollment Report> Enroll total by State/County (NDUH2SRG)

NDUS 2015 Fall Enrollment Report>Table 12

As of 09.18.2017

Table 12
Headcount Enrollments and Headcount by Tuition Residency Status
 Fall 2017

Residency Status	BSC	DCB	LRSC ¹	NDSCS ²	WSC ¹	DSU	MaSU	MiSU ³	VCSU	NDSU	UND	Duplicated Total	Unduplicated Total	Percent of Total
Resident														
North Dakota	2,948	694	1,510	2,026	792	976	710	1,788	977	5,983	5,607	24,011	23,237	51.1%
North Dakota Military	8	6	100	17		3	12	340	11	274	800	1,571	1,562	3.4%
Alumni Dependent	1			1						10	24	36	36	0.1%
Resident Sub-Total	2,957	700	1,610	2,044	792	979	722	2,128	988	6,267	6,431	25,618	24,825	54.8%
Non Resident														
Minnesota Reciprocity	27	3	41	503	1	6	104	20	130	5,841	4,013	10,689	10,525	23.1%
Minnesota Professional Contiguous										130	48	178	178	0.4%
Midwest Higher Ed Compact ⁴	89	12	23	107	123	183	12	220	29	226	369	1,393	1,369	3.0%
Western Exchange ⁵	160	29	165	199	27	13	115	139	83	765	833	2,528	2,491	5.5%
Non Resident	191	46	42	20	74	130	93	287	192	124	655	1,854	1,817	4.0%
Non Resident Total	332	119	91	112	81	114	94	422	100	1,005	2,057	4,527	4,499	9.9%
Totals	3,756	909	1,972	2,985	1,098	1,425	1,140	3,216	1,522	14,358	14,406	46,787	45,477	100.0%

Methodology Note: Tuition Residency Status in this table reflects student status in Campus Solutions. Students indicated as nonresident students at LRSC, MiSU, and NDSCS may pay North Dakota resident rates based on institutional policy.

Data Definitions:

¹LRSC & WSC – Non-foreign, nonresident students pay the North Dakota in-state tuition rate.

²NDSCS – Nonresident students who live in campus housing pay the North Dakota in-state tuition rate.

³MiSU: All Minot State University students pay the North Dakota in-state tuition rate when enrolling in on-campus courses.

⁴Midwest Higher Ed (MHEC) - A non-profit regional organization, established by compact statute, to assist Midwestern states in advancing higher education through interstate cooperation and resource sharing. Members are: Illinois, Indiana, Iowa, Kansas, Michigan, Minnesota, Missouri, Nebraska, North Dakota, Ohio, South Dakota, and Wisconsin.

⁵Western Exchange (WICHE) – A regional organization created by the Western Regional Education Compact and adopted in the 1950s by western states. WICHE was created to facilitate resources sharing among the higher education systems of the west. Members are: Alaska, Arizona, California, Colorado, Hawaii, Idaho, Montana, Nevada, New Mexico, North Dakota, Oregon, South Dakota, Utah, Washington, and Wyoming.

Sources:

Campus Solutions>Student Records>Enrollment Reports>Student Data Statistics (NDU02SRD)

As of 09.18.2017

Table 13
Headcount Enrollment¹ by Age
 Fall 2017

Age ²	BSC	DCB	LRSC	NDSCS	WSC	DSU	MaSU	MiSU	VCSU	NDSU	UND	Age Group Total	Unduplicated Age Group Total	Percent of Total
Under 18	464	212	666	640	251	201	140	162	78	31	64	2,909	2,792	6.1%
18-19	1,221	231	437	1,140	423	302	225	672	334	4,542	3,399	12,926	12,613	27.7%
20-21	544	105	286	540	118	324	228	757	405	4,507	3,575	11,389	10,992	24.2%
22-24	336	80	191	237	70	269	203	706	231	2,772	2,867	7,962	7,754	17.1%
25-29	342	85	151	133	91	145	118	405	141	1,224	1,969	4,804	4,706	10.3%
30-34	302	58	89	79	52	84	88	218	110	604	987	2,671	2,591	5.7%
35-39	197	42	59	54	39	42	57	120	62	308	654	1,634	1,595	3.5%
40-49	221	57	51	79	38	43	62	128	98	273	631	1,681	1,630	3.6%
50-64	122	35	38	68	11	14	19	47	61	92	248	755	748	1.6%
> 65	7	4	4	15	5	1		1	2	5	12	56	56	0.1%
Campus Total	3,756	909	1,972	2,985	1,098	1,425	1,140	3,216	1,522	14,358	14,406	46,787	45,477	100.0%

Data Definitions:

¹**Headcount Enrollment** - A student counted as one enrollment in degree credit courses at his/her home campus as of the 20th scheduled day of class.

²**Age** - Students' age is as of the 20th day of classes during the specified term. NDUS reporting truncates student age to whole year classification.

Sources:

Campus Solutions > Student Records> Enrollment Reports> Enroll Sum of Students by Age (NDUH2SRN)

As of 09.18.2017

Table 14
Headcount Enrollment¹ by Race²
 Fall 2017

NDUS Institution Classification	White ³	Not Specified ⁵	Hispanic or Latino ⁶	Black or African American ⁷	Two or more races ⁸	American Indian or Alaska Native ⁹	Asian ¹⁰	Native Hawaiian or Pacific Islander ¹¹	Total
Two Year Colleges	8,822	244	410	546	393	190	104	11	10,720
Regional Universities	5,718	159	458	414	262	99	170	23	7,303
Research Universities	23,438	826	872	945	871	308	1,481	23	28,764
Total	37,978	1,229	1,740	1,905	1,526	597	1,755	57	46,787
Unduplicated Total	36,891	1,202	1,694	1,844	1,473	578	1,739	56	45,477
Percent of Total	81.1%	2.6%	3.7%	4.1%	3.2%	1.3%	3.8%	0.1%	100.0%

Methodology Note: Race reported by student.

Data Definitions:

¹**Headcount Enrollment** - A student counted as one enrollment in degree credit courses at his/her home campus as of the 20th scheduled day of class. Subtotals and totals may reflect duplication due to collaborative students.

²**Race** - Group or groups with which a person identifies or having origins as identified as valid values for IPEDS reporting.

³**White** - A person having origins in any of the original peoples of Europe, the Middle East, or North Africa.

⁴**Non Resident Alien** - A non-U.S. citizen or resident alien.

⁵**Not Specified** - Student did not identify with a selected race.

⁶**Hispanic or Latino** - Cuban, Mexican, Puerto Rican, South or Central American, or other Spanish culture or origin, regardless of race.

⁷**Black or African American** - A person having origins in any of the black racial groups of Africa.

⁸**Two or more races** - A person having more than one origin.

⁹**American Indian or Alaska Native** - Original peoples of North and South America (including Central America) who maintains cultural identification through tribal affiliation or community attachment.

¹⁰**Asian** - Having origin in the Far East, Southeast Asia, or the Indian Subcontinent, including, for example, Cambodia, China, India, Japan, Korea, Malaysia, Pakistan, the Philippine Islands, Thailand, and Vietnam.

¹¹**Native Hawaiian or Pacific Islander** - A person having origins in any of the original peoples of Hawaii, Guam, Samoa, or other Pacific Islands.

Sources:

Campus Solutions>Student Records>Enrollment Reports>Student Data Statistics (NDU02SRD)

As of 09.18.2017

Figure 2: Campus headcount enrollment by race as a percentage of total headcount

