



# 2015 Fall Enrollment Report

November 2015

Prepared for the  
State Board of Higher Education



# **2015 FALL ENROLLMENT**

**PUBLISHED BY:**

**NORTH DAKOTA UNIVERSITY SYSTEM**

**State Capitol  
Bismarck, ND 58505**

**October 2015**

*Report prepared by*

**Jennifer Weber, M.S. Ed., NDUS Institutional Research**

## **ACKNOWLEDGMENTS**

This publication reports the enrollment data submitted to the North Dakota University System by North Dakota institutions of postsecondary education. The North Dakota University System acknowledges the efforts of each institution for the attention to detail reflected in the quality of these data.

## Table of Contents

North Dakota State Board of Higher Education.....	1
Institutional Abbreviations for NDUS Campuses .....	2
Purpose of Report.....	3
System Duplicated and Institutional Headcount Enrollments.....	4
Full Time and Part Time Headcount Enrollment.....	5
High School Students Enrolled in College Courses, Beginning Freshmen and Transfer Students, Developmental and Collaborative Course Enrollments .....	6
Full Time Equivalent Enrollments of Part Time and Full Time by Level of Student Based on Total Student Credit Hours .....	7
Trending North Dakota University System Degree Credit.....	8
Charts 1, 2, 3: Headcount, Full Time, and FTE Trending .....	9
Degree Credit Headcount by Instructional Mode.....	10
Degree Credit Headcount Enrollment by E-Learning Delivery Method.....	11
Undergraduate Headcount Enrollment by State .....	12
Graduate and Professional Headcount Enrollment by State.....	13
Headcount Enrollments for North Dakota Students by County of Residence.....	14
Unduplicated Headcount Enrollments for North Dakota Students by County of Residence .....	15
All Enrollments for North Dakota Students by County of Residence.....	16
Headcount Enrollments and Headcount by Tuition Residency Status .....	17
NDUS Headcount Enrollment by Age.....	18
NDUS Headcount Enrollment by Race.....	19
Glossary .....	20

## North Dakota State Board of Higher Education

Kathleen Neset  
Chair  
Tioga

Don Morton  
Vice Chair  
Fargo

Kevin Melicher, O.D.  
Member  
Fargo

Nick Hacker  
Member  
Bismarck

Mike Ness  
Member  
Hazen

Kari Reichert, J.D.  
Member  
Mandan

Greg Stemen  
Member  
LaMoure

Eric Murphy, Ph.D.  
Faculty Adviser  
Grand Forks

Brett Johnson  
Student Member  
Grand Forks

Emma Tufte  
Staff Adviser  
Valley City

---

Mark R. Hagerott, Ph.D.  
Chancellor  
North Dakota University System

## Institutional Abbreviations for NDUS Campuses

BSC	<b>Bismarck State College — Bismarck, ND 58501</b> (BSC is a community college that offers one four-year Bachelor's of Applied Science program achieved by completing two years of coursework beyond a two-year associate in an applied science degree.)
DCB	Dakota College at Bottineau — Bottineau, ND
DSU	Dickinson State University — Dickinson, ND
LRSC	Lake Region State College — Devils Lake, ND
MaSU	Mayville State University — Mayville, ND
MiSU	Minot State University — Minot, ND
NDSCS	North Dakota State College of Science — Wahpeton, ND
NDSU	North Dakota State University — Fargo, ND
UND	University of North Dakota — Grand Forks, ND
VCSU	Valley City State University — Valley City, ND
WSC	Williston State College — Williston, ND



## Purpose of Report

To improve student access and success in North Dakota University System institutions, the State Board of Higher Education has implemented enrollment policies that better reflect the differentiated missions of research universities, regional universities, and community colleges. This report addresses the transition in policy by grouping data by institutional mission.

The North Dakota University System includes:

Two research universities:

- North Dakota State University (NDSU)
- University of North Dakota (UND)

Four regional universities:

- Dickinson State University (DSU)
- Mayville State University (MaSU)
- Minot State University (MiSU)
- Valley City State University (VCSU)

Five two-year community colleges:

- Bismarck State College (BSC)
- Dakota College of Bottineau (DCB)
- Lake Region State College (LRSC)
- North Dakota State College of Science (NDSCS)
- Williston State College (WSC)

As amended January 19, 2012, State Board of Higher Education Policy 440 states as follows,

“Each campus shall report fall and spring semester enrollments for degree credit students based on the number of students enrolled on the twentieth scheduled class day of the fall and spring semesters. "Enrolled" means: the student has registered and paid tuition and fees, made arrangements to pay or a plan for payment is in place; an extension has been granted as provided by Policy 830.1; or, the institution has other documentation the student is registered and in attendance, including, for example, documented class attendance or student access or use of a learning management system or other online services on or after the first scheduled class day of the semester.”

As required by the North Dakota State Board of Higher Education, this enrollment report includes all degree credit enrollments for all NDUS institutions and is consistent with protocols implemented by the Integrated Postsecondary Education Data System



Table 1  
**System Duplicated and Institutional Headcount Enrollments<sup>1</sup>**  
 Fall 2015

<b>Institution</b>	<b>Freshman</b>	<b>Sophomore</b>	<b>Junior</b>	<b>Senior</b>	<b>Graduate</b>	<b>Professional</b>	<b>Total</b>	<b>Collaborative Development<sup>3</sup> Only</b>
BSC	1,971	1,835	44	228			<b>4,078</b>	1
DCB	467	225					<b>692</b>	183
LRSC	1,511	407					<b>1,918</b>	5
NDSCS	2,113	1,010					<b>3,123</b>	14
WSC	708	330					<b>1,038</b>	-
<b>Subtotal</b>	<b>6,770</b>	<b>3,807</b>	<b>44</b>	<b>228</b>			<b>10,849</b>	<b>203</b>
DSU	420	214	259	417	7		<b>1,317</b>	-
MaSU	434	180	146	331	19		<b>1,110</b>	-
MiSU	962	578	533	991	284		<b>3,348</b>	1
VCSU	430	235	219	394	144		<b>1,422</b>	-
<b>Subtotal</b>	<b>2,246</b>	<b>1,207</b>	<b>1,157</b>	<b>2,133</b>	<b>454</b>		<b>7,197</b>	<b>1</b>
NDSU	2,951	2,761	2,688	3,637	2,138	341	<b>14,516</b>	-
UND	2,654	2,593	2,175	4,155	2,862	512	<b>14,951</b>	-
<b>Subtotal</b>	<b>5,605</b>	<b>5,354</b>	<b>4,863</b>	<b>7,792</b>	<b>5,000</b>	<b>853</b>	<b>29,467</b>	<b>0</b>
<b>NDUS Duplicated Enrollment<sup>2</sup></b>	<b>14,621</b>	<b>10,368</b>	<b>6,064</b>	<b>10,153</b>	<b>5,454</b>	<b>853</b>	<b>47,513</b>	<b>204</b>

**Data Definitions:**

<sup>1</sup>**Headcount Enrollment** - A student counted as one enrollment in degree credit courses as of the 20th scheduled day of class.

<sup>2</sup>**NDUS Duplicated Enrollment** – The sum of all the institutional headcounts. Accounts for duplication of students enrolled on more than one campus.

<sup>3</sup>**Collaborative Development** - A student who enrolls in a course at a NDUS institution other than his/her home institution for the purpose of completing developmental courses only. These students are non-degree seeking students at the institution at which they are taking collaborative developmental courses. Students in this category are not included in the official headcount because of their non-degree status.

**Sources:**

Campus Solutions>Student Records>Enrollment Report>Headcounts and FTE Enrollments (NDUH2SRA)

Campus Solutions>Student Records>Enrollment Reports>Development Course Enrollments (NDU02SRY)

As of 09.22.2015

Table 2  
**Full Time and Part Time Headcount Enrollment<sup>1</sup>**  
 Fall 2015

Institution	Freshman		Sophomore		Junior		Senior		Graduate		Professional		Total	
	Full Time <sup>2</sup>	Part Time <sup>3</sup>	Full Time	Part Time	Full Time	Part Time	Full Time	Part Time	Full Time	Part Time	Full Time	Part Time	Full Time	Part Time
BSC	1,076	895	1,134	701	16	28	55	173					2,281	1,797
DCB	219	248	122	103									341	351
LRSC	307	1,204	228	179									535	1,383
NDSCS	945	1,168	749	261									1,694	1,429
WSC	362	346	241	89									603	435
<b>Subtotal</b>	<b>2,909</b>	<b>3,861</b>	<b>2,474</b>	<b>1,333</b>	<b>16</b>	<b>28</b>	<b>55</b>	<b>173</b>					<b>5,454</b>	<b>5,395</b>
DSU	229	191	188	26	199	60	280	137		7			896	421
MaSU	163	271	162	18	116	30	197	134		19			638	472
MiSU	401	561	484	94	445	88	691	300	107	177			2,128	1,220
VCSU	200	230	211	24	135	84	238	156	5	139			789	633
<b>Subtotal</b>	<b>993</b>	<b>1,253</b>	<b>1,045</b>	<b>162</b>	<b>895</b>	<b>262</b>	<b>1,406</b>	<b>727</b>	<b>112</b>	<b>342</b>			<b>4,451</b>	<b>2,746</b>
NDSU	2,650	301	2,603	158	2,430	258	2,993	644	672	1,466	336	5	11,684	2,832
UND	1,865	789	2,368	225	1,934	241	2,953	1,202	1,237	1,625	510	2	10,867	4,084
<b>Subtotal</b>	<b>4,515</b>	<b>1,090</b>	<b>4,971</b>	<b>383</b>	<b>4,364</b>	<b>499</b>	<b>5,946</b>	<b>1,846</b>	<b>1,909</b>	<b>3,091</b>	<b>846</b>	<b>7</b>	<b>22,551</b>	<b>6,916</b>
<b>NDUS Duplicated Enrollment<sup>4</sup></b>	<b>8,417</b>	<b>6,204</b>	<b>8,490</b>	<b>1,878</b>	<b>5,275</b>	<b>789</b>	<b>7,407</b>	<b>2,746</b>	<b>2,021</b>	<b>3,433</b>	<b>846</b>	<b>7</b>	<b>32,456</b>	<b>15,057</b>

**Data Definitions:**

<sup>1</sup>**Headcount Enrollment** - A student counted as one enrollment in degree credit courses as of the 20th scheduled day of class.

<sup>2</sup>**Full Time** – Undergraduate students enrolled in 12 or more credit hours or graduate and professional students enrolled in 9 or more credit hours (as of the 20th scheduled day of class).

<sup>3</sup>**Part Time** – Undergraduate students enrolled in less than 12 credit hours or graduate and professional students enrolled in less than 9 credit hours (as of the 20th scheduled day of class).

<sup>4</sup>**NDUS Duplicated Enrollment** – The sum of all the institutional headcounts. Accounts for duplication of students enrolled on more than one campus.

**Sources:**

Campus Solutions>Student Records>Enrollment Report>Headcounts and FTE Enrollments (NDUH2SRA)

As of 09.22.2015

Table 3  
**High School Students Enrolled in College Courses, Beginning Freshmen and Transfer Students, Developmental and Collaborative Course Enrollments<sup>1</sup>**  
 Fall 2015

Institution	High School Students Enrolled in College Courses <sup>2</sup>			New Undergraduate Student Enrollments <sup>3</sup>		Developmental <sup>4</sup>				Collaborative Enrollment <sup>5</sup>		
	Number of Course Enrollments	Headcount of High School Students Enrolled in College Courses	High School Students with more than one College Course Enrollment	Beginning Freshmen <sup>6</sup>	Transfer <sup>7</sup>	Number of Developmental Enrollments	Headcount of Students Enrolled in Developmental Courses	Students with More than One Developmental Enrollment	Collaborative Development <sup>8</sup> Enrollments	Collaborative Developmental Enrollments	Collaborative Degree Credit Enrollments	Total Collaborative Enrollments
BSC	612	528	79	848	280	809	484	220	1	1	154	155
DCB	130	99	30	160	71	646	393	178	183	183	50	233
LRSC	958	672	243	201	97	264	187	77	5	5	424	429
NDSCS	1,478	825	477	715	197	881	494	220	14	14	41	55
WSC	258	222	35	310	99	340	213	101	-	-	31	31
<b>Subtotal</b>	<b>3,436</b>	<b>2,346</b>	<b>864</b>	<b>2,234</b>	<b>744</b>	<b>2,940</b>	<b>1,771</b>	<b>796</b>	<b>203</b>	<b>203</b>	<b>700</b>	<b>903</b>
DSU	174	155	19	211	146	222	140	75	-	-	4	4
MaSU	220	183	32	138	133	165	107	42	-	-	27	27
MiSU	206	164	42	347	280	94	94	-	1	1	115	116
VCSU	69	53	16	209	111	42	42	-	-	-	130	130
<b>Subtotal</b>	<b>669</b>	<b>555</b>	<b>109</b>	<b>905</b>	<b>670</b>	<b>523</b>	<b>383</b>	<b>117</b>	<b>1</b>	<b>1</b>	<b>276</b>	<b>277</b>
NDSU	3	3	-	2,552	697	789	656	107	-	-	113	113
UND	11	5	3	1,895	706	326	306	20	-	-	68	68
<b>Subtotal</b>	<b>14</b>	<b>8</b>	<b>3</b>	<b>4,447</b>	<b>1,403</b>	<b>1,115</b>	<b>962</b>	<b>127</b>	<b>0</b>	<b>0</b>	<b>181</b>	<b>181</b>
<b>NDUS Total</b>	<b>4,119</b>	<b>2,909</b>	<b>976</b>	<b>7,586</b>	<b>2,817</b>	<b>4,578</b>	<b>3,116</b>	<b>1,040</b>	<b>204</b>	<b>204</b>	<b>1,157</b>	<b>1,361</b>

**Data Definitions:**

<sup>1</sup>**Enrollments** - Total number of enrollments into courses. One student will account for multiple enrollments when he/she is enrolled in more than one course.

<sup>2</sup>**High School Students Enrolled in College Courses** – A high school student who enrolls in college courses. Includes both dual credit and early entry. Totals include only those students enrolled in college courses in the eleven NDUS institutions.

<sup>3</sup>**New Undergraduate Student Enrollments** – Includes both incoming freshmen and undergraduate transfer, degree seeking students for the reporting term.

<sup>4</sup>**Developmental** - Basic academic skills courses designed to prepare students to complete postsecondary academic degree-credit courses. Do not count as degree credit coursework.

<sup>5</sup>**Collaborative Enrollment** - A student who enrolls in a course at a NDUS institution other than his/her home institution.

<sup>6</sup>**Beginning Freshmen** - Full-time/Part-time student attending any institution for the first time as a freshman. Since part-time students are included, this result is not the same as the IPEDS first-time full-time count.

<sup>7</sup>**Transfer** - A student entering an institution for the first time but known to have previously attended a postsecondary institution at the same level. This student may transfer with or without credit.

<sup>8</sup>**Collaborative Development** - A student who enrolls in a course at a NDUS institution other than his/her home institution for the purpose of completing developmental courses only. These students are non-degree seeking students at the institution at which they are taking collaborative developmental courses. Students in this category are not included in the official headcount because of their non-degree status.

**Sources:**

Campus Solutions>Student Records>Enrollment Reports>Student Data Statistics (NDU02SRD); Campus Solutions>Student Records>Enrollment Reports>Developmental Course Enrollments (NDU02SRY); Campus Solutions>Student Records>Enrollment Reports>High School Enrolled Students (NDUH2SRW); Campus Solutions>Student Records>Enrollment Reports>Compliance Report (NDUH2SRK)  
 As of 09.22.2015

Table 4  
**Full Time Equivalent Enrollments of Part Time and Full Time by Level of Student Based on Total Student Credit Hours<sup>1</sup>**  
 Fall 2015

Institution	Freshmen			Sophomore			Junior			Senior			Graduate			Professional <sup>5</sup>			Total		
	FTE of Part Time <sup>2</sup>	FTE <sup>3</sup>	SCH <sup>4</sup>	FTE of Part Time	FTE	SCH	FTE of Part Time	FTE	SCH	FTE of Part Time	FTE	SCH	FTE of Part Time	FTE	SCH	FTE of Part Time	FTE	SCH	FTE of Part Time	FTE	SCH
BSC	277	1,372	20,582	279	1,401	21,021	11	25	374	66	113	1,702							633	2,912	43,679
DCB	69	310	4,647	29	149	2,235													99	459	6,882
LRSC	363	672	10,086	72	308	4,622													435	981	14,708
NDSCS	373	1,398	20,966	119	908	13,614													492	2,305	34,580
WSC	100	468	7,014	37	271	4,064													137	738	11,078
<b>Subtotal</b>	<b>1,182</b>	<b>4,220</b>	<b>63,294</b>	<b>537</b>	<b>3,037</b>	<b>45,556</b>	<b>11</b>	<b>25</b>	<b>374</b>	<b>66</b>	<b>113</b>	<b>1,702</b>							<b>1,796</b>	<b>7,395</b>	<b>110,926</b>
DSU	51	286	4,291	12	203	3,049	29	233	3,494	64	346	5,185	2	2	21				159	1,070	16,040
MaSU	66	236	3,544	10	178	2,667	13	131	1,962	54	248	3,715	3	3	38				146	796	11,926
MiSU	184	575	8,621	43	520	7,801	42	482	7,227	136	815	12,222	74	179	2,149				479	2,570	38,019
VCSU	84	278	4,163	11	225	3,371	42	177	2,660	66	300	4,495	48	52	619				251	1,031	15,308
<b>Subtotal</b>	<b>385</b>	<b>1,375</b>	<b>20,619</b>	<b>76</b>	<b>1,126</b>	<b>16,888</b>	<b>126</b>	<b>1,023</b>	<b>15,343</b>	<b>321</b>	<b>1,708</b>	<b>25,617</b>	<b>127</b>	<b>236</b>	<b>2,827</b>				<b>1,035</b>	<b>5,467</b>	<b>81,293</b>
NDSU	91	2,785	41,776	73	2,721	40,808	119	2,590	38,848	265	3,268	49,024	522	1,130	13,556	5	341	5,564	1,074	12,834	189,576
UND	204	2,106	31,590	110	2,498	37,467	104	2,063	30,943	485	3,429	51,434	619	1,847	22,164	2	512	9,779	1,524	12,455	183,377
<b>Subtotal</b>	<b>295</b>	<b>4,891</b>	<b>73,366</b>	<b>184</b>	<b>5,218</b>	<b>78,275</b>	<b>223</b>	<b>4,653</b>	<b>69,791</b>	<b>750</b>	<b>6,697</b>	<b>100,458</b>	<b>1,140</b>	<b>2,977</b>	<b>35,720</b>	<b>7</b>	<b>853</b>	<b>15,343</b>	<b>2,599</b>	<b>25,289</b>	<b>372,953</b>
<b>NDUS Total</b>	<b>1,862</b>	<b>10,485</b>	<b>157,279</b>	<b>797</b>	<b>9,381</b>	<b>140,718</b>	<b>360</b>	<b>5,701</b>	<b>85,508</b>	<b>1,137</b>	<b>8,518</b>	<b>127,777</b>	<b>1,267</b>	<b>3,212</b>	<b>38,547</b>	<b>7</b>	<b>853</b>	<b>15,343</b>	<b>5,430</b>	<b>38,151</b>	<b>565,172</b>

**Methodology Note:** Numbers have been rounded to the nearest whole number

**Data Definitions:**

<sup>1</sup>**Full Time Equivalent Enrollments Based on Total Student Credit Hours** - Student credit hours accumulated at the undergraduate level divided by 15 plus student credit hours accumulated at the graduate level divided by 12. Every professional student is counted as one FTE.

<sup>2</sup>**FTE of Part Time** - Full time equivalent enrollment of students enrolled in less than twelve credit hours as of the 20th day of classes.

<sup>3</sup>**FTE** - Full Time Equivalent based on total student credit hours.

<sup>4</sup>**SCH** - Scheduled Credit Hours. The sum of all course credit hours in which students are enrolled as of the 20th day of classes.

<sup>5</sup>**Professional** - A student who has completed a baccalaureate degree and is enrolled in a post-baccalaureate program leading to a professional degree in law, medicine, or pharmacy.

**Sources:**

Campus Solutions>Student Records>Enrollment Report>Headcounts and FTE Enrollments (NDUH2SRA)

As of 09.22.2015

Table 5  
**Trending North Dakota University System Degree Credit<sup>1</sup>**  
 Fall 2015

Institution	2011			2012			2013			2014			2015		
	HC <sup>2</sup>	FT <sup>3</sup>	FTE <sup>4</sup>	HC	FT	FTE	HC	FT	FTE	HC	FT	FTE	HC	FT	FTE
BSC	4,392	2,631	3,209	4,109	2,416	2,990	4,062	2,365	2,955	4,002	2,303	2,909	4,078	2,281	2,912
DCB	812	414	524	774	348	474	793	367	502	753	398	518	692	341	459
LRSC	2,056	518	988	1,974	524	973	1,898	486	943	1,988	530	978	1,918	535	981
NDSCS	3,127	1,791	2,366	3,066	1,807	2,354	3,168	1,712	2,295	3,033	1,706	2,272	3,123	1,694	2,305
WSC	993	415	608	808	418	537	909	430	593	883	421	579	1,038	603	738
<b>Sub Total</b>	<b>11,380</b>	<b>5,769</b>	<b>7,695</b>	<b>10,731</b>	<b>5,513</b>	<b>7,328</b>	<b>10,830</b>	<b>5,360</b>	<b>7,288</b>	<b>10,659</b>	<b>5,358</b>	<b>7,256</b>	<b>10,849</b>	<b>5,454</b>	<b>7,395</b>
DSU	2,346	1,629	1,959	1,837	1,218	1,454	1,449	1,018	1,201	1,479	980	1,176	1,317	896	1,070
MaSU	970	568	704	1,020	614	759	1,065	587	749	1,081	635	798	1,110	638	796
MiSU	3,657	2,356	2,795	3,560	2,279	2,731	3,533	2,273	2,710	3,410	2,191	2,600	3,348	2,128	2,570
VCSU	1,384	829	1,011	1,362	799	995	1,366	761	975	1,378	783	990	1,422	789	1,031
<b>Sub Total</b>	<b>8,357</b>	<b>5,382</b>	<b>6,469</b>	<b>7,779</b>	<b>4,910</b>	<b>5,939</b>	<b>7,413</b>	<b>4,639</b>	<b>5,635</b>	<b>7,348</b>	<b>4,589</b>	<b>5,564</b>	<b>7,197</b>	<b>4,451</b>	<b>5,467</b>
NDSU	14,399	11,675	12,606	14,443	11,733	12,707	14,629	11,798	12,797	14,747	11,917	12,934	14,516	11,684	12,834
UND	14,697	10,992	12,319	15,250	11,382	12,729	15,143	11,160	12,606	14,906	10,786	12,420	14,951	10,867	12,455
<b>Sub Total</b>	<b>29,096</b>	<b>22,667</b>	<b>24,925</b>	<b>29,693</b>	<b>23,115</b>	<b>25,436</b>	<b>29,772</b>	<b>22,958</b>	<b>25,403</b>	<b>29,653</b>	<b>22,703</b>	<b>25,354</b>	<b>29,467</b>	<b>22,551</b>	<b>25,289</b>
<b>NDUS Total</b>	<b>48,833</b>	<b>33,818</b>	<b>39,089</b>	<b>48,203</b>	<b>33,538</b>	<b>38,703</b>	<b>48,015</b>	<b>32,957</b>	<b>38,326</b>	<b>47,660</b>	<b>32,650</b>	<b>38,174</b>	<b>47,513</b>	<b>32,456</b>	<b>38,151</b>

**Data Definitions:**

<sup>1</sup>**Degree Credit** - All institutional activities that can be applied toward college degree or credit based developmental or remedial courses taken by a degree-seeking student as reported to IPEDS.

<sup>2</sup>**HC** - Headcount Enrollment

<sup>3</sup>**FT** - Full time student.

<sup>4</sup>**FTE** - Full Time Equivalent based on total student credit hours

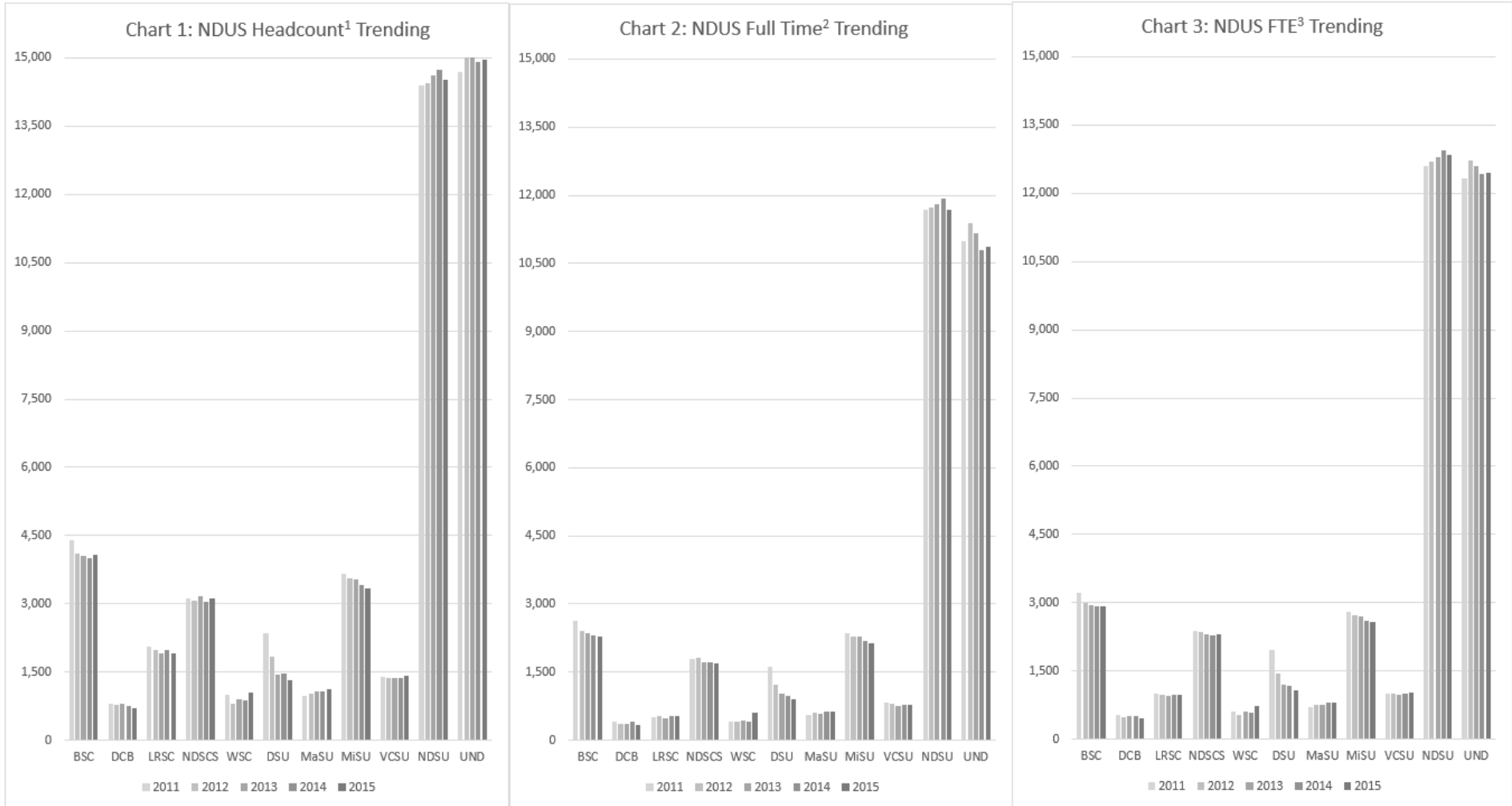
**Sources:**

Campus Solutions>Student Records>Enrollment Report>Headcounts and FTE Enrollments (NDUH2SRA)

NDUS Fall 2014 Enrollment Report: Table 5

As of 09.22.2015

Charts 1, 2, 3  
**Headcount, Full Time, and FTE Trending**  
 Fall 2011 to Fall 2015



**Data Definitions:**

<sup>1</sup>**Headcount Enrollment** - A student counted as one enrollment in degree credit courses at his/her home campus as of the 20th scheduled class day.

<sup>2</sup>**Full Time** - Undergraduate students enrolled in 12 or more credit hours or graduate and professional students enrolled in 9 or more credit hours (as of the 20th scheduled day of class).

<sup>3</sup>**FTE**- Full Time Equivalent based on total student credit hours

**Sources:** Trending data charts derived from Table 5.

As of 09.22.2015

Table 6  
**Degree Credit<sup>1</sup> Headcount Enrollment<sup>2</sup> by Instructional Mode**  
 Fall 2015

Institution	Distance Education (DE) <sup>3</sup>				Unduplicated Campus DE Total	Face-to-face Campus Total	Total Headcount
	Face to Face <sup>4</sup> Off Campus	Independent Study <sup>5</sup>	E-Learn <sup>6</sup>	Duplicated <sup>7</sup> Distance Ed Total			
BSC	495	3	2,085	2,583	2,542	2,245	4,078
DCB	146		302	448	443	390	692
LRSC	1,116		654	1,770	1,653	384	1,918
NDSUS	1,234	1	863	2,097	1,931	1,562	3,123
WSC	107		780	887	876	615	1,038
<b>Subtotal</b>	<b>3,098</b>	<b>4</b>	<b>4,684</b>	<b>7,785</b>	<b>7,445</b>	<b>5,196</b>	<b>10,849</b>
DSU	43	19	510	572	519	1,045	1,317
MaSU	78	1	563	642	631	596	1,110
MiSU	541	20	1,159	1,720	1,632	2,320	3,348
VCSU	215		839	1,054	989	830	1,422
<b>Subtotal</b>	<b>877</b>	<b>40</b>	<b>3,071</b>	<b>3,988</b>	<b>3,771</b>	<b>4,791</b>	<b>7,197</b>
NDSU	405		5,063	5,468	5,348	13,689	14,516
UND	406	22	4,894	5,322	5,260	11,667	14,951
<b>Subtotal</b>	<b>811</b>	<b>22</b>	<b>9,957</b>	<b>10,790</b>	<b>10,608</b>	<b>25,356</b>	<b>29,467</b>
<b>NDUS Total</b>	<b>4,786</b>	<b>66</b>	<b>17,712</b>	<b>22,563</b>	<b>21,824</b>	<b>35,343</b>	<b>47,513</b>
<b>Percentage</b>					<b>45.9%</b>	<b>74.4%</b>	<b>100.0%</b>

**Methodology Note:** Report NDUH2SRO is used in reporting as it includes ONLY degree credit coursework. Report NDUH2SRZ includes non-credit coursework, and thus is not used.

**Data Definitions:**

<sup>1</sup>**Degree Credit** - Instructional activities associated with the amount of instructor/student contact time that could be applied toward a college degree or developmental/remedial courses taken by a degree-seeking student as reported to IPEDS.

<sup>2</sup>**Headcount Enrollment** - A student counted as one enrollment in degree credit courses at his/her home campus as of the 20th scheduled class day.

<sup>3</sup>**Distance Education** - courses where a student is not located in a traditional face-to-face classroom on his/her home institution. Includes face-to-face off campus, correspondence, interactive video network, synchronous and asynchronous internet.

<sup>4</sup>**Face-to-face Off Campus** - A classroom environment where the instructor and students are physically located in the same place in an off campus location.

<sup>5</sup>**Independent Study** - A correspondence course in which all communications between instructor and student is accomplished through the mail, email or fax.

<sup>6</sup>**E-Learn** - Instruction in an electronic format via the internet. Includes synchronous and asynchronous internet, and interactive video network (IVN).

<sup>7</sup>**Duplicated** - An enrollment count in which an individual student may be counted more than once because they are enrolled in more than one medium or more than one campus.

**Sources:** Campus Solutions>Student Records>Enrollment Report>Degr Crdt H/C by Category (NDUH2SRO)

As of 09.22.2015

Table 7  
**Degree Credit<sup>1</sup> Headcount Enrollment<sup>2</sup> by E-Learning<sup>3</sup> Delivery Method**  
 Fall 2015

<b>Institution</b>	<b>Interactive Video<sup>4</sup> (IVN)</b>	<b>Synchronous Internet<sup>5</sup></b>	<b>Asynchronous Internet<sup>6</sup></b>	<b>Combo<sup>7</sup></b>	<b>Duplicated Headcount Enrollments<sup>2</sup></b>	<b>Unduplicated Headcount Enrollments<sup>2</sup></b>
BSC	126	23	1,958		2,107	2,085
DCB	156		176		332	302
LRSC	72		604		676	654
NDSCS	113		693	109	915	863
WSC	57		589	236	882	780
<b>Subtotal</b>	<b>524</b>	<b>23</b>	<b>4,020</b>	<b>345</b>	<b>4,912</b>	<b>4,684</b>
DSU	80		483	19	582	510
MaSU	136	9	475		620	563
MiSU	19	51	1,113		1,183	1,159
VCSU	56		802		858	839
<b>Subtotal</b>	<b>291</b>	<b>60</b>	<b>2,873</b>	<b>19</b>	<b>3,243</b>	<b>3,071</b>
NDSU	52	69	3,616	1,616	5,353	5,063
UND	37	800	4,278		5,115	4,894
<b>Subtotal</b>	<b>89</b>	<b>869</b>	<b>7,894</b>	<b>1,616</b>	<b>10,468</b>	<b>9,957</b>

**Data Definitions:**

<sup>1</sup>**Degree Credit** - Instructional activities associated with the amount of instructor/student contact time that could be applied toward a college degree or developmental/remedial courses taken by a degree-seeking student as reported to IPEDS.

<sup>2</sup>**Headcount Enrollment** - A student counted as one enrollment in degree credit courses at his/her home campus as of the 20th scheduled class day.

<sup>3</sup>**E-Learning** - Instruction in an electronic format via the internet. Includes synchronous and asynchronous internet, and interactive video network (IVN).

<sup>4</sup>**Interactive Video** - Two way video system in which the participants can synchronously interact.

<sup>5</sup>**Synchronous Internet** - Internet based class where instructor and students are online at the same time in order to interact.

<sup>6</sup>**Asynchronous Internet** - Internet based class where instructor and students are not online at the same time.

<sup>7</sup>**Combo** - a course that uses a combination of both traditional face-to-face and e-learning.

**Sources:**

Campus Solutions> Student Records> Enrollment Reports> E-Lrn Degr H/C by dlrvy mthd (NDU02SRQ)

As of 09.22.2015



Table 8  
Undergraduate Headcount Enrollment by State  
Fall 2015

State	Two Year Colleges					Regional Universities				Research Universities		NDUS Headcount Enrollment	NDUS Unduplicated Headcount
	BSC	DCB	LRSC	NDSCS	WSC	DSU	MASU	MISU	VCSU	NDSU	UND		
Alabama	3	3	1	4	1		1	2		4	38	57	56
Alaska	4	3	1	1		4	8	8	9	8	30	76	75
Arizona	14	1	2	2	11	7	7	16	15	17	81	173	172
Arkansas	14	4			1	1	1	3	1	9	8	42	42
California	41	4	6	7	7	61	55	107	39	65	349	741	733
Colorado	35	8	1	5	3	6	4	10	7	32	180	291	286
Connecticut	17				1	2	1	1	2	3	23	50	50
Delaware	3	1	1						2	1	10	18	18
District of Columbia		1								1	5	7	7
Florida	35	18	5	15	4	9	31	50	6	17	82	272	270
Georgia	15	10	1	3	2		12	3	3	7	51	107	106
Hawaii	1	1	2	3		1	3	5	8	5	22	51	48
Idaho	7		2	1	2	4	4	5	5	6	36	72	71
Illinois	23	3	5	9	2	1	13	24	5	50	163	298	293
Indiana	18	1	1	3		6	2	6		9	40	86	84
Iowa	10			2				11	2	35	61	121	121
Kansas	3					1	4	5	1	27	45	86	84
Kentucky	9	6				2	1	1		2	19	40	39
Louisiana	15	2		4	1					3	10	35	35
Maine	2							4		2	9	17	17
Maryland	13	4	1	7				11		6	50	92	91
Massachusetts	9		1	1		1	1	3	1	6	46	69	69
Michigan	20	9		4	1	5	1	13	8	20	93	174	174
Minnesota	70	13	238	700	7	12	165	78	175	6,219	4,823	12,500	12,121
Mississippi	3			1						2	13	19	19
Missouri	15	1	2	1	2	4		4	2	31	57	119	119
Montana	30	9	4	35	57	120	5	67	10	60	126	523	519
Nebraska	16		1			1		9	1	23	45	96	94
Nevada	9	2	2		3	6	6	5	2	10	35	80	79
New Hampshire	12		1					3		3	15	34	33
New Jersey							5	5	5	6	62	83	83
New Mexico	8		3		1	1	1	2		3	31	50	49
New York	50	1	3	3	5	3	2	6	3	10	82	168	165
North Carolina	16	4	1	1	1		2	8	4	8	56	101	101
<b>NORTH DAKOTA</b>	<b>3,234</b>	<b>515</b>	<b>1,551</b>	<b>2,193</b>	<b>862</b>	<b>941</b>	<b>698</b>	<b>2,397</b>	<b>924</b>	<b>6,506</b>	<b>6,238</b>	<b>26,059</b>	<b>25,210</b>
Ohio	15	13	2	5		2		9	2	11	63	122	122
Oklahoma	28			2	3	2	3	1		14	33	86	85
Oregon	3	2			4	3	1	13	3	9	51	89	88
Pennsylvania	20	1	1		1	1	1	8	2	9	64	108	107
Rhode Island				4				1			10	15	15
South Carolina	7	3		2		1		4	7	5	30	59	58
South Dakota	51	1	7	76	3	18	2	8	18	234	192	610	601
Tennessee	7	4		1			3	4	2	5	28	54	53
Texas	48	7	6	4	3	5	9	25	7	51	172	337	334
Utah	18	1			10	3	1	9	4	8	40	94	94
Vermont	2								1		5	8	8
Virginia	21	8		3	2	3	4	11	3	13	58	126	124
Washington	23	5	5	5	2	9	8	30	6	27	193	313	306
West Virginia	4	1						2			7	14	14
Wisconsin	19		11	5	3	3	8	13	14	127	278	481	470
Wyoming	19	1	3	1	4	19	7	6	83	10	68	221	219
APO <sup>1</sup> AE/AP	10		2	1			3	4	4	3	28	55	53
Canada	2	16	16	2	21	11	14	227	20	25	167	521	512
Guam	1					1	1			1		4	4
Puerto Rico			1					2		1	1	5	5
Virgin Islands										1	3	4	4
Other International	6	5	28	7	8	37	11	98	8	746	427	1,381	1,372
Not Reported											1	1	1
<b>Campus Totals</b>	<b>4,078</b>	<b>692</b>	<b>1,918</b>	<b>3,123</b>	<b>1,038</b>	<b>1,317</b>	<b>1,110</b>	<b>3,348</b>	<b>1,422</b>	<b>14,516</b>	<b>14,951</b>	<b>47,513</b>	<b>46,182</b>

**Methodology Note:** Home state reported by student

**Data Definitions:**

<sup>1</sup>APO AE/AP – A military post office address.

**Sources:**

Campus Solutions>Student Records>Enrollment Report> Enroll total by State/County (NDUH2SRG) As of 09.22.2015

Table 9  
**Graduate<sup>1</sup> and Professional<sup>2</sup> Headcount Enrollment by State**  
 Fall 2015

State	Regional Universities				Research Universities		NDUS Totals	NDUS Unduplicated Total
	DSU	MASU	MISU	VCSU	NDSU	UND		
Alabama					2	17	19	19
Alaska			1		1	8	10	10
Arizona			6	1	6	27	40	40
Arkansas			2		4	2	8	8
California			5		18	74	97	97
Colorado			1		17	50	68	68
Connecticut				1	1	6	8	8
Delaware			1		1	4	6	6
District of Columbia						3	3	3
Florida			4		8	24	36	36
Georgia			1	1	5	17	24	24
Hawaii					1	5	6	6
Idaho					5	14	19	19
Illinois			3		15	38	56	56
Indiana			2		7	14	23	23
Iowa			5	1	16	22	44	44
Kansas			1		16	12	29	29
Kentucky			1		1	6	8	8
Louisiana						3	3	3
Maine					2	5	7	7
Maryland					3	25	28	28
Massachusetts			2		4	16	22	22
Michigan			9	2	13	31	55	55
Minnesota			4	9	517	557	1,087	1,087
Mississippi					2	7	9	9
Missouri			1		17	15	33	33
Montana			4	3	9	45	61	61
Nebraska					7	12	19	19
Nevada						12	12	12
New Hampshire			1		1	4	6	6
New Jersey			4	2	4	20	30	30
New Mexico			1		1	7	9	9
New York			2	3	4	31	40	40
North Carolina					7	29	36	36
<b>NORTH DAKOTA</b>	<b>6</b>	<b>19</b>	<b>136</b>	<b>94</b>	<b>1,151</b>	<b>1,559</b>	<b>2,965</b>	<b>2,965</b>
Ohio			2	1	8	28	39	39
Oklahoma					12	15	27	27
Oregon					4	17	21	21
Pennsylvania			3	1	7	26	37	37
Rhode Island						2	2	2
South Carolina			1	5	5	9	20	20
South Dakota			1	5	32	66	104	104
Tennessee					4	10	14	14
Texas			6	1	30	47	84	84
Utah					5	18	23	23
Vermont				1		3	4	4
Virginia			1	2	8	25	36	36
Washington			8	1	9	49	67	67
West Virginia						2	2	2
Wisconsin	1		4	2	18	44	69	69
Wyoming			3	5	6	28	42	42
APO <sup>3</sup> AE/AP				3	2	8	13	13
Canada			48		10	79	137	137
American Samoa					1		1	1
Guam						1	1	1
Puerto Rico						1	1	1
Virgin Islands						1	1	1
Other International			10		451	175	636	636
<b>Campus Totals</b>	<b>7</b>	<b>19</b>	<b>284</b>	<b>144</b>	<b>2,478</b>	<b>3,375</b>	<b>6,307</b>	<b>6,307</b>

**Data Definitions:**

<sup>1</sup>**Graduate** - A student who holds a bachelor's degree or first professional degree, or equivalent, and is enrolled in a graduate degree program.

<sup>2</sup>**Professional** - A student who has completed a baccalaureate degree and is enrolled in a post-baccalaureate program leading to a professional degree in law, medicine, or pharmacy.

<sup>3</sup>**APO AE/AP** - A military post office address

**Sources:**  
 Campus Solutions>Student Records>Enrollment Report> Enroll total by State/County (NDUH2SRG)

As of 09.22.2015

Table 10  
**Headcount Enrollments<sup>1</sup> for North Dakota Students by County of Residence**  
 Fall 2015

County	Two Year Colleges					Regional Universities				Research Universities		Total	NDUS Unduplicated Total	
	BSC	DCB	LRSC	NDSCS	WSC	DSU	MASU	MISU	VCSU	NDSU	UND			
Adams	12			5	2	19	1		2	10	5	56	56	
Barnes	7	19	4	29	1	2	11	2	240	66	43	424	406	
Benson	10	11	60	8			8	6	4	27	24	158	153	
Billings	2									1	1	4	3	
Bottineau	14	90	6	8		1	5	46	6	37	20	233	229	
Bowman	19		2	5	13	30		1	2	22	19	113	112	
Burke	9	4	1		14	1	1	17	3	4	5	59	58	
Burleigh	1,520	7	40	54	13	116	10	119	55	580	453	2,967	2,851	
Cass	25	7	46	977	3	10	94	45	168	3,741	713	5,829	5,673	
Cavalier	5	1	33	4	1			12	3	1	32	37	129	126
Dickey	1	2		55				2	2	20	17	159	158	
Divide	9	2		2	16	4	1	5		11	5	55	54	
Dunn	24	2	2	4	3	35		2	1	11	15	99	96	
Eddy	6	3	41	4		1	3	1	4	27	6	96	91	
Emmons	61		16	21		3		2	6	46	9	164	156	
Foster	10	3	54	6			6	5	12	39	26	161	156	
Golden Valley	8		2	4		8				14	6	42	41	
Grand Forks	7	5	520	36	4	4	114	19	16	133	3,372	4,230	4,069	
Grant	26		2	3	4	8	2	1	3	9	1	59	53	
Griggs	6	2	26	9		1	6	2	4	16	8	80	76	
Hettinger	25	1	1	3		38		3	2	16	5	94	89	
Kidder	20	1	10	3		1		1	10	17	6	69	68	
Lamoure	7	14		23		1	1	1	19	27	14	107	102	
Logan	15	2	10	6		1	2		8	21	2	67	62	
McHenry	17	36	24	5		1	2	69	3	30	21	208	201	
McIntosh	39	1	5	7				2	5	33	9	101	93	
McKenzie	27	3	3	1	28	7	5	15	6	14	23	132	129	
McLean	125	16	9	16	4	3	1	31	5	39	18	267	257	
Mercer	128	2	15	13	17	6	2	11	8	56	47	305	299	
Morton	608	2	5	14	10	56	8	45	19	165	87	1,019	970	
Mountrail	29	8	3	5	22	7		34	5	26	24	163	151	
Nelson	4	1	31	6			10	1	3	17	24	97	94	
Oliver	24		1			2	1	1		4	5	38	37	
Pembina	1	2	35	11	1	1	30	2	6	50	67	206	196	
Pierce	17	37	17	12			1	10	3	20	25	142	139	
Ramsey	2	4	249	20	3		46	13	11	64	124	536	516	
Ransom	7	1	1	71		1	12	1	23	54	11	182	172	
Renville	8	22	3	4	1			23		18	15	94	93	
Richland	12	2	6	389		2	17	5	36	158	80	707	683	
Rolette	10	23	21	5	1	1	2	14	18	33	75	203	194	
Sargent	1	1	1	69	1		6	1	20	55	19	174	173	
Sheridan	17	4	1	2				1		3	3	31	30	
Sioux	9	2	2	1	2	1		1	1	2	5	26	24	
Slope	2			1		1		1	1	4		10	9	
Stark	122	9	6	23	8	548	2	16	14	124	114	986	956	
Steele	3		6	2			14		8	16	9	58	58	
Stutsman	46	26	30	126	1	3	3	14	75	105	65	494	470	
Towner	3	3	26	7			3	2	3	15	10	72	70	
Trail	2	1	16	17		1	183	4	8	89	51	372	367	
Walsh	6		103	17			40	4	13	66	130	379	368	
Ward	75	119	21	47	40	6	8	1,718	20	181	247	2,482	2,433	
Wells	18	1	26	13	1	2	1	7	4	31	17	121	120	
Williams	24	12	8	20	648	7	20	70	19	66	99	993	964	
<b>Grand Total</b>	<b>3,234</b>	<b>514</b>	<b>1,550</b>	<b>2,193</b>	<b>862</b>	<b>940</b>	<b>698</b>	<b>2,397</b>	<b>923</b>	<b>6,505</b>	<b>6,236</b>	<b>26,052</b>	<b>25,204</b>	

**Methodology Note:** County of Residence reported by student.

**Data Definitions:**

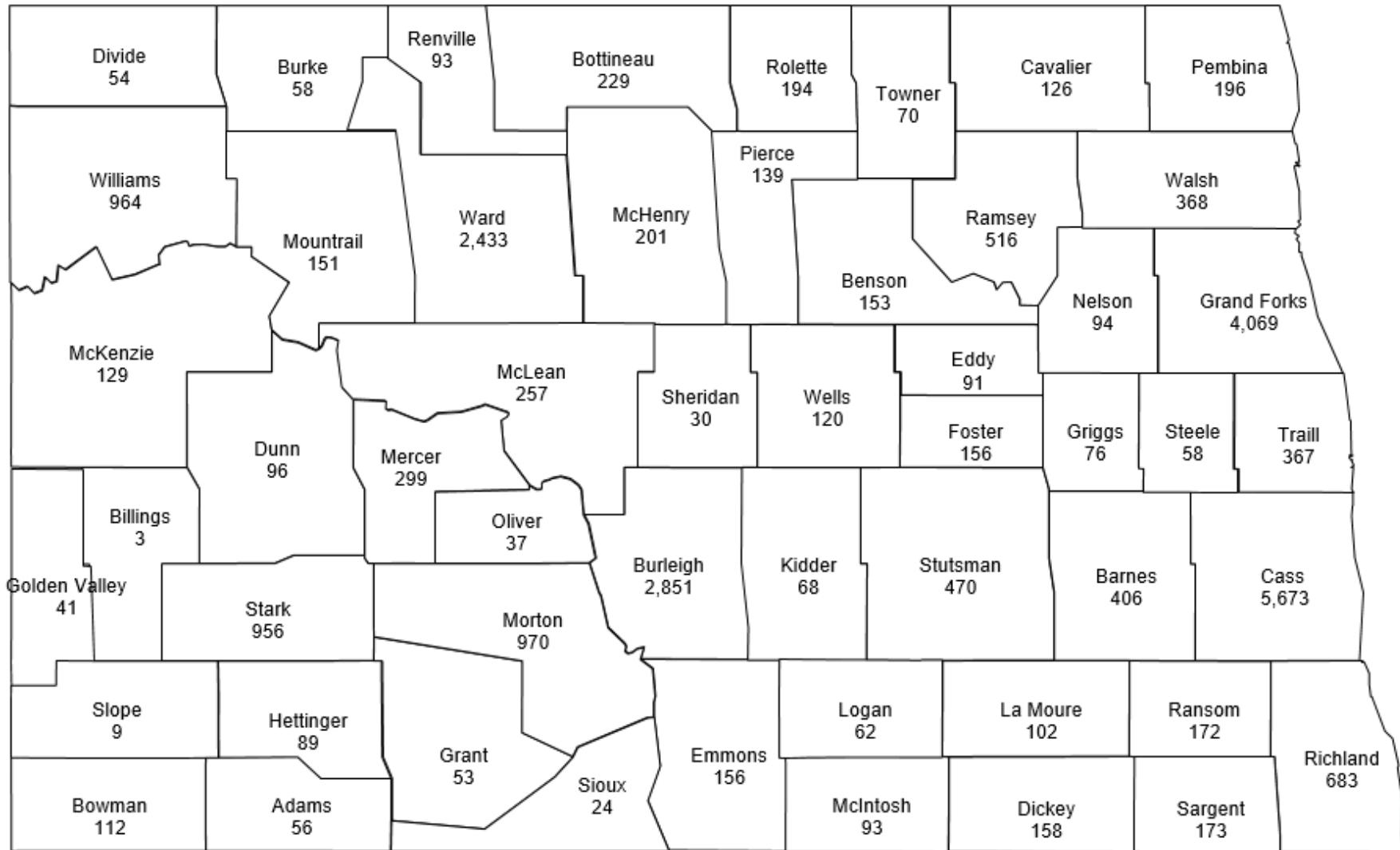
<sup>1</sup>**Headcount Enrollment** - A student counted as one enrollment in degree credit courses as of the 20th scheduled day of class.

**Sources:**

Campus Solutions>Student Records>Enrollment Report> Enroll total by State/County (NDUH2SRG)

As of 09.22.2015

Figure 1  
**Unduplicated Headcount Enrollments<sup>1</sup> for North Dakota Students by County of Residence**  
 Fall 2015



**Methodology Note:** County of Residence reported by student; County of Residence is unspecified for 5 North Dakota students. Total headcount=25,204

**Data Definitions:**

<sup>1</sup>Unduplicated headcount enrollment - A student counted as one NDUS enrollment in degree credit courses as of the 20th scheduled class day.

**Sources:**

Campus Solutions> Student Records> Student Enroll by State/County (NDUS2SRF)

As of 09.22.2015

Table 11  
**All Enrollments<sup>1</sup> for North Dakota Students by County of Residence**  
 Fall 2011 through Fall 2015

ND County	2011	2012	2013	2014	2015	ND County
Adams	78	66	47	57	56	Adams
Barnes	435	382	416	409	424	Barnes
Benson	183	166	160	176	158	Benson
Billings	10	8	9	9	4	Billings
Bottineau	337	323	306	260	233	Bottineau
Bowman	134	103	118	117	113	Bowman
Burke	67	71	67	58	59	Burke
Burleigh	4,175	3,028	2,882	2,900	2,967	Burleigh
Cass	6,100	5,753	5,790	5,716	5,829	Cass
Cavalier	178	154	160	133	129	Cavalier
Dickey	174	175	164	148	159	Dickey
Divide	70	56	53	57	55	Divide
Dunn	154	116	91	91	99	Dunn
Eddy	108	89	89	82	96	Eddy
Emmons	190	192	170	188	164	Emmons
Foster	157	149	147	155	161	Foster
Golden Valley	81	57	58	56	42	Golden Valley
Grand Forks	4,419	4,367	4,419	4,118	4,230	Grand Forks
Grant	66	55	59	70	59	Grant
Griggs	90	89	89	75	80	Griggs
Hettinger	119	103	86	90	94	Hettinger
Kidder	107	79	82	81	69	Kidder
LaMoure	152	117	124	110	107	LaMoure
Logan	69	70	65	91	67	Logan
McHenry	302	258	266	237	208	McHenry
McIntosh	107	99	87	107	101	McIntosh
McKenzie	147	108	116	132	132	McKenzie
McLean	332	296	262	270	267	McLean
Mercer	416	329	317	326	305	Mercer
Morton	1,320	1,045	993	991	1,019	Morton
Mountrail	197	171	188	165	163	Mountrail
Nelson	147	121	96	97	97	Nelson
Oliver	61	47	41	33	38	Oliver
Pembina	225	202	206	216	206	Pembina
Pierce	212	194	171	159	142	Pierce
Ramsey	629	605	596	566	536	Ramsey
Ransom	219	163	160	168	182	Ransom
Renville	118	113	95	103	94	Renville
Richland	759	746	717	738	707	Richland
Rolette	283	266	242	235	203	Rolette
Sargent	204	185	205	194	174	Sargent
Sheridan	55	42	39	34	31	Sheridan
Sioux	46	25	26	24	26	Sioux
Slope	5	7	8	7	10	Slope
Stark	1,137	975	885	995	986	Stark
Steele	52	58	62	67	58	Steele
Stutsman	813	544	517	495	494	Stutsman
Towner	79	86	87	72	72	Towner
Traill	409	386	363	359	372	Traill
Walsh	419	414	401	388	379	Walsh
Ward	2,873	2,656	2,647	2,574	2,482	Ward
Wells	187	156	151	147	121	Wells
Williams	889	760	768	799	993	Williams
Unspecified	55	33	47	5		Unspecified
<b>Total</b>	<b>30,350</b>	<b>26,825</b>	<b>26,410</b>	<b>25,950</b>	<b>26,052</b>	<b>Total</b>
<b>Percent annual change</b>	<b>-1.22%</b>	<b>-11.61%</b>	<b>-1.55%</b>	<b>-1.74%</b>	<b>0.39%</b>	

**Methodology Note:** County of Residence reported by student

**Data Definitions:**

<sup>1</sup>Enrollments – A student counted as one enrollment in degree credit courses at each campus attending.

**Sources:**

Campus Solutions>Student Records>Enrollment Report> Enroll total by State/County (NDUH2SRG)

NDUS 2014 Fall Enrollment Report>Table 12

As of 09.22.2015

Table 12  
**Headcount Enrollments and Headcount by Tuition Residency Status**  
 Fall 2015

Residency Status	BSC	DCB	LRSC <sup>1</sup>	NDSCS <sup>2</sup>	WSC	DSU	MaSU	MiSU <sup>3</sup>	VCSU	NDSU	UND	Duplicated Total	Unduplicated Total	Percent of Total
<b>Resident</b>														
North Dakota	3,097	502	1,431	2,185	767	861	677	1,838	899	6,070	5,865	24,192	23,391	50.6%
North Dakota Military	7	8	104	14	3	3	13	282	2	253	805	1,494	1,474	3.2%
Alumni Dependent										11	28	39	39	0.1%
<b>Resident Sub-Total</b>	<b>3,104</b>	<b>510</b>	<b>1,535</b>	<b>2,199</b>	<b>770</b>	<b>864</b>	<b>690</b>	<b>2,120</b>	<b>901</b>	<b>6,334</b>	<b>6,698</b>	<b>25,725</b>	<b>24,904</b>	<b>54.1%</b>
<b>Non Resident</b>														
Minnesota Reciprocity	15	10	37	507		9	95	5	143	5,652	4,326	10,799	10,590	22.9%
Minnesota Professional				1						151	37	189	189	0.4%
Contiguous	89	11	19	109	64	163	20	278	43	277	362	1,435	1,414	3.1%
Midwest Higher Ed Compact <sup>4</sup>	202	21	214	155	31	18	96	186	71	728	822	2,544	2,345	5.1%
Western Exchange <sup>5</sup>	205	33	28	15	70	152	106	273	185	128	654	1,849	1,816	3.9%
Non Resident	463	107	85	137	103	111	103	486	79	1,246	2,052	4,972	4,924	10.7%
<b>Non Resident Total</b>	<b>974</b>	<b>182</b>	<b>383</b>	<b>924</b>	<b>268</b>	<b>453</b>	<b>420</b>	<b>1,228</b>	<b>521</b>	<b>8,182</b>	<b>8,253</b>	<b>21,788</b>	<b>21,278</b>	<b>44.8%</b>
<b>Totals</b>	<b>4,078</b>	<b>692</b>	<b>1,918</b>	<b>3,123</b>	<b>1,038</b>	<b>1,317</b>	<b>1,110</b>	<b>3,348</b>	<b>1,422</b>	<b>14,516</b>	<b>14,951</b>	<b>47,513</b>	<b>46,182</b>	<b>100.0%</b>

**Methodology Note:** Tuition Residency Status in this table reflects student status in Campus Solutions. Students indicated as nonresident students at LRSC, MiSU, and NDSCS may pay North Dakota resident rates based on institutional policy.

**Data Definitions:**

<sup>1</sup>LRSC – Non-foreign, nonresident students pay the North Dakota in-state tuition rate.

<sup>2</sup>NDSCS – Nonresident students who live in campus housing pay the North Dakota in-state tuition rate.

<sup>3</sup>MiSU: All Minot State University students pay the North Dakota in-state tuition rate when enrolling in on-campus courses.

<sup>4</sup>Midwest Higher Ed (MHEC) - A non-profit regional organization, established by compact statute, to assist Midwestern states in advancing higher education through interstate cooperation and resource sharing. Members are: Illinois, Indiana, Iowa, Kansas, Michigan, Minnesota, Missouri, Nebraska, North Dakota, Ohio, South Dakota, and Wisconsin.

<sup>5</sup>Western Exchange (WICHE) – A regional organization created by the Western Regional Education Compact and adopted in the 1950s by western states. WICHE was created to facilitate resources sharing among the higher education systems of the west. Members are: Alaska, Arizona, California, Colorado, Hawaii, Idaho, Montana, Nevada, New Mexico, North Dakota, Oregon, South Dakota, Utah, Washington, and Wyoming.

**Sources:**

Campus Solutions>Student Records>Enrollment Reports>Student Data Statistics (NDU02SRD)

As of 09.22.2015

Table 13  
**NDUS Headcount Enrollment<sup>1</sup> by Age**  
 Fall 2015

Age <sup>2</sup>	BSC	DCB	LRSC	NDSCS	WSC	DSU	MaSU	MiSU	VCSU	NDSU	UND	Age Group Duplicated Total	Age Group Unduplicated Total	Percent of Total
< 18	474	95	612	763	191	142	151	163	56	24	64	2,735	2,642	5.7%
18-19	1,247	194	430	1,149	369	278	243	594	341	4,434	3,351	12,630	12,294	26.6%
20-21	639	113	304	528	120	316	244	823	381	4,444	3,826	11,738	11,307	24.5%
22-24	361	74	214	222	104	281	193	770	212	2,863	3,143	8,437	8,230	17.8%
25-29	431	63	161	139	111	133	90	460	132	1,379	1,981	5,080	4,963	10.7%
30-34	327	38	79	100	59	78	72	216	101	643	1,086	2,799	2,733	5.9%
35-39	219	26	35	61	30	33	52	140	67	313	620	1,596	1,554	3.4%
40-49	248	41	49	75	31	46	40	125	89	304	591	1,639	1,610	3.5%
50-64	125	43	32	71	19	8	25	54	41	106	282	806	797	1.7%
> 65	7	5	2	15	4	2	0	3	2	6	7	53	52	0.1%
<b>Campus Total</b>	<b>4,078</b>	<b>692</b>	<b>1,918</b>	<b>3,123</b>	<b>1,038</b>	<b>1,317</b>	<b>1,110</b>	<b>3,348</b>	<b>1,422</b>	<b>14,516</b>	<b>14,951</b>	<b>47,513</b>	<b>46,182</b>	<b>100.0%</b>

**Data Definitions:**

<sup>1</sup>**Headcount Enrollment** - A student counted as one enrollment in degree credit courses at his/her home campus as of the 20th scheduled day of class.

<sup>2</sup>**Age** - Students' age is as of the 20th day of classes during the specified term. NDUS reporting truncates student age to whole year classification.

**Sources:**

Campus Solutions > Student Records > Enrollment Reports > Enroll Sum of Students by Age (NDUH2SRN)

As of 09.22.2015

<b>Descriptive Statistics (years)</b>	
Mean	23.5
Median	21
Mode	19
Minimum	14
Maximum	86
Range	76

Table 14  
**NDUS Headcount Enrollment<sup>1</sup> by Race<sup>2</sup>**  
 Fall 2015

NDUS Institution Classification	White <sup>3</sup>	Non Resident Alien <sup>4</sup>	Not Specified <sup>5</sup>	Hispanic or Latino <sup>6</sup>	Black or African American <sup>7</sup>	Two or more races <sup>8</sup>	American Indian or Alaska Native <sup>9</sup>	Asian <sup>10</sup>	Native Hawaiian or Pacific Islander <sup>11</sup>	Total
Two Year Colleges	8,904	218	292	327	513	326	187	67	15	10,849
Regional Universities	5,329	547	142	390	361	234	82	82	30	7,197
Research Universities	23,628	2,022	785	683	752	760	347	465	25	29,467
<b>NDUS Total</b>	<b>37,861</b>	<b>2,787</b>	<b>1,219</b>	<b>1,400</b>	<b>1,626</b>	<b>1,320</b>	<b>616</b>	<b>614</b>	<b>70</b>	<b>47,513</b>
<b>NDUS Unduplicated Total</b>	<b>36,779</b>	<b>2,751</b>	<b>1,195</b>	<b>1,375</b>	<b>1,548</b>	<b>1,269</b>	<b>592</b>	<b>604</b>	<b>69</b>	<b>46,182</b>
Percent of Total	<b>79.6%</b>	<b>6.0%</b>	<b>2.6%</b>	<b>3.0%</b>	<b>3.4%</b>	<b>2.7%</b>	<b>1.3%</b>	<b>1.3%</b>	<b>0.1%</b>	<b>100.0%</b>

**Methodology Note:** Race reported by student.

**Data Definitions:**

<sup>1</sup>**Headcount Enrollment** - A student counted as one enrollment in degree credit courses at his/her home campus as of the 20th scheduled day of class. Subtotals and totals may reflect duplication due to collaborative students.

<sup>2</sup>**Race** - Group or groups with which a person identifies or having origins as identified as valid values for IPEDS reporting.

<sup>3</sup>**White** - A person having origins in any of the original peoples of Europe, the Middle East, or North Africa.

<sup>4</sup>**Non Resident Alien** - A citizen or national of the U.S. and who is in this country on a visa or temporary basis and does not have the right to remain indefinitely.

<sup>5</sup>**Not Specified** - Student did not identify with a selected race.

<sup>6</sup>**Hispanic or Latino** - Cuban, Mexican, Puerto Rican, South or Central American, or other Spanish culture or origin, regardless of race.

<sup>7</sup>**Black or African American** - A person having origins in any of the black racial groups of Africa.

<sup>8</sup>**Two or more races** - A person having more than one origin.

<sup>9</sup>**American Indian or Alaska Native** - Original peoples of North and South America (including Central America) who maintains cultural identification through tribal affiliation or community attachment.

<sup>10</sup>**Asian** - Having origin in the Far East, Southeast Asia, or the Indian Subcontinent, including, for example, Cambodia, China, India, Japan, Korea, Malaysia, Pakistan, the Philippine Islands, Thailand, and Vietnam.

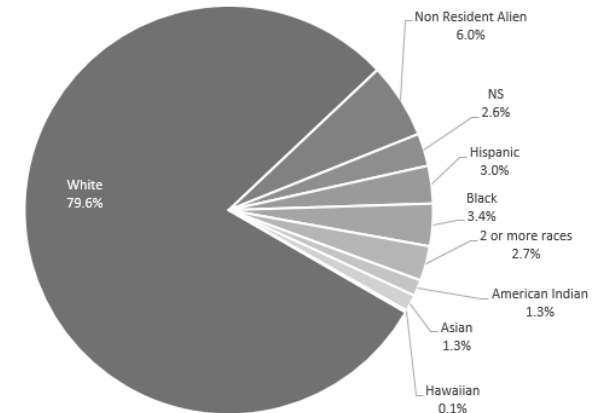
<sup>11</sup>**Native Hawaiian or Pacific Islander** - A person having origins in any of the original peoples of Hawaii, Guam, Samoa, or other Pacific Islands.

**Sources:**

Campus Solutions>Student Records>Enrollment Reports>Student Data Statistics (NDU02SRD)

As of 09.22.2015

Figure 2: Campus headcount enrollment by race as a percentage of total headcount





## Glossary

**American Indian or Alaska Native** - Original peoples of North and South America (including Central America) who maintains cultural identification through tribal affiliation or community attachment.

**Age** – Student age as of the 20<sup>th</sup> day of classes during specified term. NDUS reporting truncates student age to whole year classification.

**APO AE/AP** – A military post office address.

**Asian** - Having origin in the Far East, Southeast Asia, or the Indian Subcontinent, including, for example, Cambodia, China, India, Japan, Korea, Malaysia, Pakistan, the Philippine Islands, Thailand, and Vietnam.

**Asynchronous Internet** - Internet based class where instructor and students are not online at the same time.

**Beginning Freshmen** - Full-time/Part-time student attending any institution for the first time as a freshman. Since part-time students are included, this result is not the same as the IPEDS first-time full-time count.

**Black or African American** - A person having origins in any of the black racial groups of Africa.

**Collaborative Development** - A student who enrolls in a course at a NDUS institution other than his/her home institution for the purpose of completing developmental courses only. These students are non-degree seeking students at the institution at which they are taking collaborative developmental courses. Students in this category are not included in the official headcount because of their non-degree status.

**Collaborative Enrollment** - A student who enrolls in a course at a NDUS institution other than his/her home institution.

**Combo** - a course that uses a combination of both traditional face-to-face and e-learning.

**Degree Credit** - Instructional activities associated with the amount of instructor/student contact time that could be applied toward a college degree or developmental/remedial courses taken by a degree-seeking student as reported to IPEDS.

**Developmental** - Basic academic skills courses designed to prepare students to complete postsecondary academic degree-credit courses. Does not count as degree credit coursework.

**Distance Education** - courses where a student is not located in a traditional face-to-face classroom on his/her home institution. Includes face-to-face off campus, correspondence, interactive video network, synchronous and asynchronous internet.

**Duplicated** - An enrollment count in which an individual student may be counted more than once because they are enrolled in more than one medium (face-to-face, e-learn, etc) or more than one campus.

**Enrollments** – Total number of enrollments into courses. One student will account for multiple enrollments when he/she is enrolled in more than one course.

**E-Learn** - Instruction in an electronic format via the internet. Includes synchronous and asynchronous internet, and interactive video network (IVN).

**Face-to-face Off Campus** - A classroom environment where the instructor and students are physically located in the same place in an off campus location

**FT** – Full time student.

**FTE** - Full Time Equivalent based on total student credit hours.

**FTE of Part Time** - Full time equivalent enrollment of students enrolled in less than twelve credit hours as of the 20th day of classes.

**Full Time** - Undergraduate students enrolled in 12 or more credit hours or graduate and professional students enrolled in 9 or more credit hours (as of the 20th scheduled day of class).

**Full Time Equivalent Enrollments Based on Total Student Credit Hours** - Student credit hours accumulated at the undergraduate level divided by 15 plus student credit hours accumulated at the graduate level divided by 12. Every professional student is counted as one FTE.

**Graduate** - A student who holds a bachelor's degree or first professional degree, or equivalent, and is enrolled in a graduate degree program.

**Headcount Enrollment** - A student counted as one enrollment in degree credit courses as of the 20th scheduled day of class.

**HC** – Headcount enrollment.

**High School Students Enrolled in College Courses** - A high school student who enrolls in college courses. Includes both dual credit and early entry. Total include only those students enrolled in NDUS institutions.

**Hispanic or Latino** - Cuban, Mexican, Puerto Rican, South or Central American, or other Spanish culture or origin, regardless of race.

**Independent Study** – A correspondence course in which all communications between the instructor and student is accomplished through mail, email or fax.

**Interactive Video (IVN)** - Two way video system in which the participants can synchronously interact.

**Midwest Higher Ed (MHEC)** - A non-profit regional organization, established by compact statute, to assist Midwestern states in advancing higher education through interstate cooperation and resource sharing. Members are: Illinois, Indiana, Iowa, Kansas, Michigan, Minnesota, Missouri, Nebraska, North Dakota, Ohio, South Dakota, and Wisconsin.

**Native Hawaiian or Pacific Islander** - A person having origins in any of the original peoples of Hawaii, Guam, Samoa, or other Pacific Islands.

**NDUS Duplicated Enrollment** – The sum of all the institutional headcounts. Accounts for duplication of students enrolled on more than one campus.

**New Undergraduate Student Enrollments** – Includes both incoming freshmen and undergraduate transfer students for the reporting term.

**Non Resident Alien** - A citizen or national of the U.S. and who is in this country on a visa or temporary basis and does not have the right to remain indefinitely.

**Not Specified** - Student did not identify with a selected race.

**Part Time** - Undergraduate students enrolled in less than 12 credit hours or graduate and professional students enrolled in less than 9 credit hours (as of the 20th scheduled day of class).

**Professional** - A student who has completed a baccalaureate degree and is enrolled in a post-baccalaureate program leading to a professional degree in law, medicine, or pharmacy.

**Race** - Group or groups with which a person identifies or having origins as identified as valid values for IPEDS reporting.

**SCH** - Scheduled Credit Hours. The sum of all course credit hours in which students are enrolled as of the 20th day of classes.

**Students Enrolled in Developmental and Degree Credit** - Students who are enrolled in both developmental and degree credit courses during the reporting term.

**Synchronous Internet** - Internet based class where instructor and students are online at the same time in order to interact.

**Transfer** - A student entering an institution for the first time but known to have previously attended a postsecondary institution at the same level. This student may transfer with or without credit.

**Two or more races** - A person having more than one origin.

**Unduplicated Headcount Enrollment** – A student counted as one NDUS enrollment in degree credit courses as of the 20<sup>th</sup> scheduled class day.

**Western Exchange (WICHE)** – A regional organization created by the Western Regional Education Compact and adopted in the 1950s by western states. WICHE was created to facilitate resources sharing among the higher education systems of the west. Members are: Alaska, Arizona, California, Colorado, Hawaii, Idaho, Montana, Nevada, New Mexico, North Dakota, Oregon, South Dakota, Utah, Washington, and Wyoming.

**White** - A person having origins in any of the original peoples of Europe, the Middle East, or North Africa.