



# 2014 Fall Enrollment Report

November 2014

Prepared for the  
State Board of Higher Education



# **2014 FALL ENROLLMENT**

**PUBLISHED BY:**

**NORTH DAKOTA UNIVERSITY SYSTEM**

**State Capitol  
Bismarck, ND 58505**

**November 2014**

*Report prepared by*

**Jennifer Weber, M.S. Ed., NDUS Institutional Research**

**Carmen Williams, UND Office of Institutional Research**

## **ACKNOWLEDGMENTS**

This publication reports the enrollment data submitted to the North Dakota University System by North Dakota institutions of postsecondary education. The North Dakota University System acknowledges the efforts of each institution for the attention to detail reflected in the quality of these data.

## Table of Contents

North Dakota State Board of Higher Education.....	1
Institutional Abbreviations for NDUS Campuses .....	2
Purpose of Report.....	3
NDUS at a Glance – A Visual Summary of Fall 2014 Enrollment.....	4
Headcount Enrollment .....	5
Full Time and Part Time Headcount Enrollment .....	6
High School Students Enrolled in College Courses, Beginning Freshmen and Transfer Students, Developmental and Collaborative Course Enrollment .....	7
Full Time Equivalent Enrollments of Part Time and Full Time by Level of Student Based on Total Student Credit Hours .....	8
Trending North Dakota University System Degree Credit .....	9
Charts 1, 2, 3: Headcount, Full Time, and FTE Trending .....	10
Degree Credit Headcount by Instructional Mode .....	11
Degree Credit Headcount by E-Learning Delivery Method.....	12
Undergraduate Headcount Enrollment by State .....	13
Graduate and Professional Headcount Enrollment by State .....	14
Headcount Enrollments for North Dakota Students by County of Residence.....	15
Figure 1: All Headcount Enrollments for North Dakota Students by County of Residence.....	16
Trending Headcount Enrollments for North Dakota Students by County of Residence.....	17
All Headcount Enrollments by Tuition Residency Status .....	18
NDUS Headcount Enrollment by Age .....	19
NDUS Headcount Enrollment by Race .....	20
Glossary.....	21

## North Dakota State Board of Higher Education

Kirsten Diederich, Ph.D.  
Chair  
Fargo

Terry Hjelmstad, Ed.D.  
Vice Chair  
Minot

Kevin Melicher, O.D.  
Member  
Fargo

Don Morton  
Member  
Fargo

Kathleen Neset  
Member  
Tioga

Kari Reichert, J.D.  
Member  
Mandan

Grant Shaft, J.D.  
Member  
Grand Forks

Eric Murphy, Ph.D.  
Faculty Adviser  
Grand Forks

Chris McEwen  
Student Member  
Fargo

Janice Hoffarth  
Staff Adviser  
Grand Forks

---

Larry C. Skogen, Ph.D.  
Interim Chancellor  
North Dakota University System

## Institutional Abbreviations for NDUS Campuses

BSC	<b>Bismarck State College — Bismarck, ND 58501</b> (BSC is a community college that offers one four-year Bachelor's of Applied Science program achieved by completing two years of coursework beyond a two-year associate in an applied science degree.)
DCB	Dakota College at Bottineau — Bottineau, ND
DSU	Dickinson State University — Dickinson, ND
LRSC	Lake Region State College — Devils Lake, ND
MaSU	Mayville State University — Mayville, ND
MiSU	Minot State University — Minot, ND
NDSCS	North Dakota State College of Science — Wahpeton, ND
NDSU	North Dakota State University — Fargo, ND
UND	University of North Dakota — Grand Forks, ND
VCSU	Valley City State University — Valley City, ND
WSC	Williston State College — Williston, ND



## Purpose of Report

To improve student access and success in North Dakota University System institutions, the State Board of Higher Education has implemented enrollment policies that better reflect the differentiated missions of research universities, regional universities, and community colleges. This report addresses the transition in policy by grouping data by institutional mission.

The North Dakota University System includes:

Two research universities:

- North Dakota State University (NDSU)
- University of North Dakota (UND)

Four regional universities:

- Dickinson State University (DSU)
- Mayville State University (MaSU)
- Minot State University (MiSU)
- Valley City State University (VCSU)

Five two-year community colleges:

- Bismarck State College (BSC)
- Dakota College of Bottineau (DCB)
- Lake Region State College (LRSC)
- North Dakota State College of Science (NDSCS)
- Williston State College (WSC)

As amended January 19, 2012, State Board of Higher Education Policy 440 states as follows,

“Each campus shall report fall and spring semester enrollments for degree credit students based on the number of students enrolled on the twentieth scheduled class day of the fall and spring semesters. "Enrolled" means: the student has registered and paid tuition and fees, made arrangements to pay or a plan for payment is in place; an extension has been granted as provided by Policy 830.1; or, the institution has other documentation the student is registered and in attendance, including, for example, documented class attendance or student access or use of a learning management system or other online services on or after the first scheduled class day of the semester.”

As required by the North Dakota State Board of Higher Education, this enrollment report includes all degree credit enrollments for all NDUS institutions and is consistent with protocols implemented by the Integrated Postsecondary Education Data System.



## NDUS at a Glance – A Visual Summary of Fall 2014 Enrollment

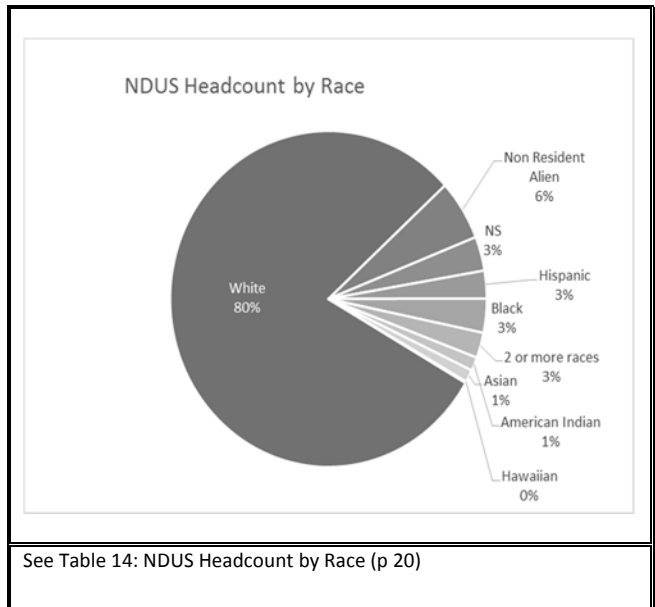
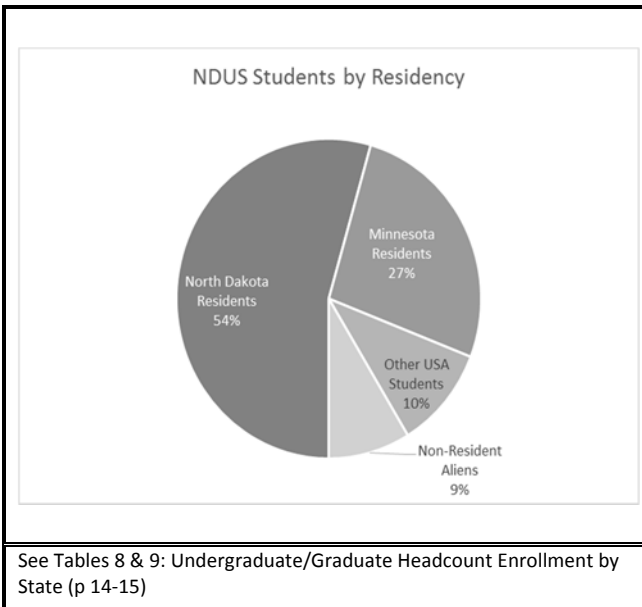
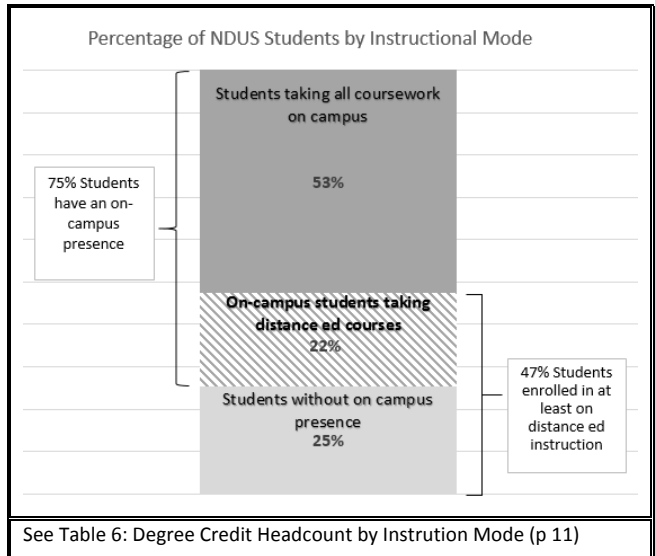
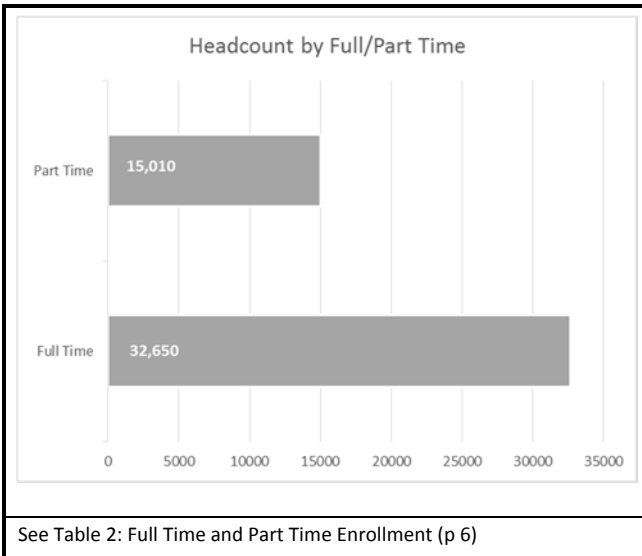
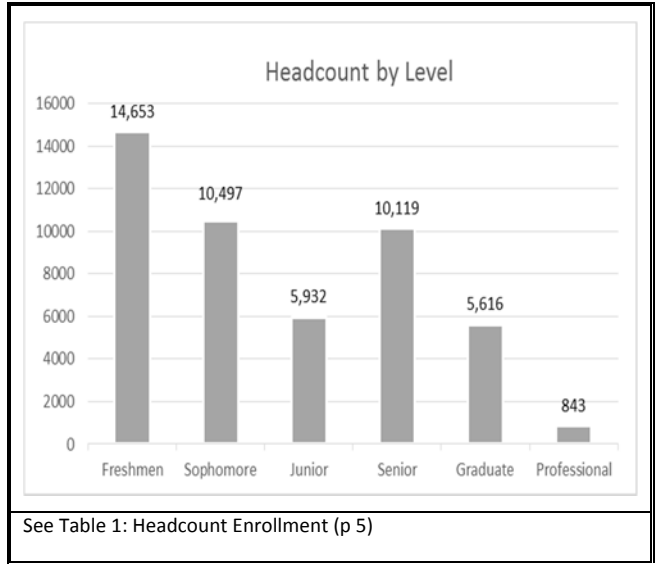
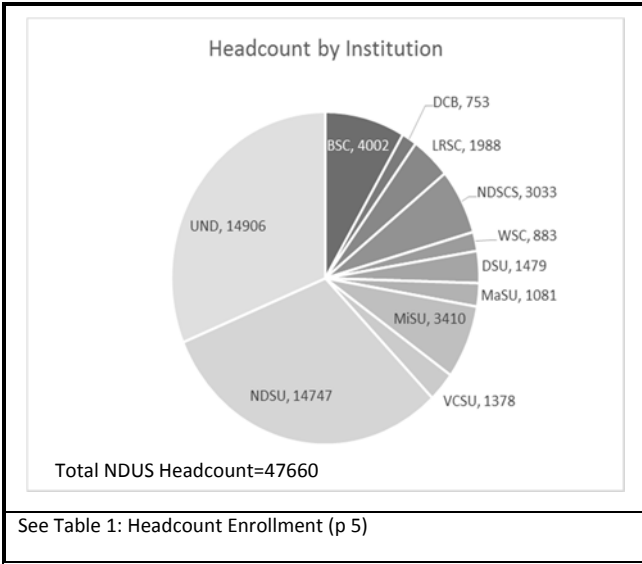


Table 1  
**Headcount Enrollment<sup>1</sup>**  
 Fall 2014

Institution	Freshman	Sophomore	Junior	Senior	Graduate	Professional	Total	Collaborative Development Only <sup>2</sup>
BSC	1,887	1,841	45	229			<b>4,002</b>	< 10 <sup>3</sup>
DCB	520	233					<b>753</b>	153
LRSC	1,564	424					<b>1,988</b>	< 10
NDSUS	2,016	1,017					<b>3,033</b>	< 10
WSC	564	319					<b>883</b>	-
<b>Subtotal</b>	<b>6,551</b>	<b>3,834</b>	<b>45</b>	<b>229</b>			<b>10,659</b>	<b>153</b>
DSU	459	264	261	491	4		<b>1,479</b>	-
MaSU	469	146	157	284	25		<b>1,081</b>	-
MiSU	1,004	554	550	1,008	294		<b>3,410</b>	-
VCSU	384	213	212	425	144		<b>1,378</b>	-
<b>Subtotal</b>	<b>2,316</b>	<b>1,177</b>	<b>1,180</b>	<b>2,208</b>	<b>467</b>		<b>7,348</b>	-
NDSU	3,012	2,892	2,524	3,696	2,283	340	<b>14,747</b>	-
UND	2,774	2,594	2,183	3,986	2,866	503	<b>14,906</b>	-
<b>Subtotal</b>	<b>5,786</b>	<b>5,486</b>	<b>4,707</b>	<b>7,682</b>	<b>5,149</b>	<b>843</b>	<b>29,653</b>	-
<b>NDUS Total</b>	<b>14,653</b>	<b>10,497</b>	<b>5,932</b>	<b>10,119</b>	<b>5,616</b>	<b>843</b>	<b>47,660</b>	<b>164</b>

Data Definitions:

<sup>1</sup>**Headcount Enrollment** - A student counted as one enrollment in degree credit courses at his/her home campus as of the 20th scheduled day of class.

<sup>2</sup>**Collaborative Development Only** - A student who enrolls in a course at a NDUS institution other than his/her home institution for the purpose of completing developmental courses only. These students are non-degree seeking students at the institution at which they are taking collaborative developmental courses. Students in this category are not included in the official headcount because of their non-degree status.

<sup>3</sup>**< 10** - Total occurrences is less than ten (*data is suppressed due to protocols for reporting occurrences with a population of less than ten in order to protect student identity*).

Sources:

Campus Solutions>NDUH2SRA>Institution Totals

Campus Solutions>NDU02SRY>Development Course Enrollments

As of 09.24.2014

Table 2  
**Full Time and Part Time Headcount Enrollment<sup>1</sup>**  
 Fall 2014

Institution	Freshman		Sophomore		Junior		Senior		Graduate		Professional		Total	
	Full Time <sup>2</sup>	Part Time <sup>3</sup>	Full Time	Part Time	Full Time	Part Time	Full Time	Part Time	Full Time	Part Time	Full Time	Part Time	Full Time	Part Time
BSC	1,103	784	1,123	718	10	35	67	162					2,303	1,699
DCB	234	286	164	69									398	355
LRSC	273	1,291	257	167									530	1,458
NDSCS	961	1,055	745	272									1,706	1,327
WSC	215	349	206	113									421	462
<b>Subtotal</b>	<b>2,786</b>	<b>3,765</b>	<b>2,495</b>	<b>1,339</b>	<b>10</b>	<b>35</b>	<b>67</b>	<b>162</b>					<b>5,358</b>	<b>5,301</b>
DSU	211	248	226	38	209	52	334	157		4			980	499
MaSU	191	278	132	14	132	25	180	104		25			635	446
MiSU	425	579	464	90	459	91	727	281	116	178			2,191	1,219
VCSU	190	194	182	31	143	69	264	161	4	140			783	595
<b>Subtotal</b>	<b>1,017</b>	<b>1,299</b>	<b>1,004</b>	<b>173</b>	<b>943</b>	<b>237</b>	<b>1,505</b>	<b>703</b>	<b>120</b>	<b>347</b>			<b>4,589</b>	<b>2,759</b>
NDSU	2,729	283	2,724	168	2,308	216	3,104	592	714	1,569	338	2	11,917	2,830
UND	1,956	818	2,367	227	1,893	290	2,863	1,123	1,208	1,658	499	4	10,786	4,120
<b>Subtotal</b>	<b>4,685</b>	<b>1,101</b>	<b>5,091</b>	<b>395</b>	<b>4,201</b>	<b>506</b>	<b>5,967</b>	<b>1,715</b>	<b>1,922</b>	<b>3,227</b>	<b>837</b>	<b>6</b>	<b>22,703</b>	<b>6,950</b>
<b>NDUS Total</b>	<b>8,488</b>	<b>6,165</b>	<b>8,590</b>	<b>1,907</b>	<b>5,154</b>	<b>778</b>	<b>7,539</b>	<b>2,580</b>	<b>2,042</b>	<b>3,574</b>	<b>837</b>	<b>6</b>	<b>32,650</b>	<b>15,010</b>

Data Definitions:

<sup>1</sup>**Headcount Enrollment** - A student counted as one enrollment in degree credit courses at his/her home campus as of the 20th scheduled day of class

<sup>2</sup>**Full Time** - Students enrolled in 12 or more credit hours as of the 20th scheduled day of class.

<sup>3</sup>**Part Time** - Students enrolled in less than 12 credit hours as of the 20th scheduled day of class

Sources:

Campus Solutions>NDUH2SRA>Institution Totals

As of 09.24.2014

Table 3

High School Students Enrolled in College Courses, Beginning Freshmen and Transfer Students, Developmental and Collaborative Course Enrollment<sup>1</sup>  
Fall 2014

Institution	High School Students Enrolled in College Courses <sup>2</sup>			New Undergraduate Student Enrollments <sup>3</sup>		Developmental <sup>4</sup>				Collaborative Enrollment <sup>5</sup>		
	Number of Course Enrollments	Headcount of High School Students Enrolled in College Courses	High School Students with more than one College Course Enrollment	Beginning Freshmen <sup>6</sup>	Transfer <sup>7</sup>	Number of Developmental Enrollments	Headcount of Students Enrolled in Developmental Courses	Students with More than One Developmental Enrollment	Collaborative Developmental Enrollments <sup>8</sup>	Collaborative Developmental Enrollments	Collaborative Degree Credit Enrollments	Total Collaborative Enrollments
BSC	507	416	82	876	271	850	514	228	1			
DCB	164	123	38	191	84	674	381	208	153			
LRSC	1,024	776	498	214	96	238	190	48	3			
NDSCS	1,515	800	207	713	179	864	470	231	7			
WSC	348	249	72	173	112	254	156	77	0			
<b>Subtotal</b>	<b>3,558</b>	<b>2,364</b>	<b>897</b>	<b>2,167</b>	<b>742</b>	<b>2,880</b>	<b>1,711</b>	<b>792</b>	<b>164</b>	<b>164</b>	<b>595</b>	<b>759</b>
DSU	254	197	47	192	178	158	119	36	0			
MaSU	241	184	42	174	105	155	123	32	0			
MiSU	267	199	64	341	316	123	123	0	0			
VCSU	39	35	4	190	100	40	40	0	0			
<b>Subtotal</b>	<b>801</b>	<b>615</b>	<b>157</b>	<b>897</b>	<b>699</b>	<b>476</b>	<b>405</b>	<b>68</b>	<b>0</b>	<b>0</b>	<b>271</b>	<b>271</b>
NDSU	7	5	1	2,469	712	957	719	158	0			
UND	12	6	3	1,906	702	358	358	0	0			
<b>Subtotal</b>	<b>19</b>	<b>11</b>	<b>4</b>	<b>4,375</b>	<b>1,414</b>	<b>1,315</b>	<b>1,077</b>	<b>158</b>	<b>0</b>	<b>0</b>	<b>154</b>	<b>154</b>
<b>NDUS Total</b>	<b>4,378</b>	<b>2,990</b>	<b>1,058</b>	<b>7,439</b>	<b>2,855</b>	<b>4,671</b>	<b>3,193</b>	<b>1,018</b>	<b>164</b>	<b>164</b>	<b>1,020</b>	<b>1,184</b>

Data Definitions:

<sup>1</sup>**Enrollments** - Total number of enrollments into courses. One student will account for multiple enrollments when he/she is enrolled in more than one course.

<sup>2</sup>**High School Students Enrolled in College Courses** – A high school student who enrolls in college courses. Includes both dual credit and early entry. Totals include only those students enrolled in college courses in the eleven NDUS institutions.

<sup>3</sup>**New Undergraduate Student Enrollments** – Includes both incoming freshmen and undergraduate transfer students for the reporting term.

<sup>4</sup>**Developmental** - Basic academic skills courses designed to prepare students to complete postsecondary academic degree-credit courses. Do not count as degree credit coursework.

<sup>5</sup>**Collaborative Enrollment** - A student who enrolls in a course at a NDUS institution other than his/her home institution

<sup>6</sup>**Beginning Freshmen** - Full-time/Part-time student attending any institution for the first time as a freshman. Since part-time students are included, this result is not the same as the IPEDS first-time full-time count

<sup>7</sup>**Transfer** - A student entering an institution for the first time but known to have previously attended a postsecondary institution at the same level. This student may transfer with or without credit.

<sup>8</sup>**Collaborative Developmental Enrollments** - A student who enrolls in a course at a NDUS institution other than his/her home institution for the purpose of completing developmental courses only. These students are non-degree seeking students at the institution at which they are taking collaborative developmental courses. Students in this category are not included in the official headcount because of their non-degree status.

Sources:

Campus Solutions>NDU02SRD>Student Data Statistics>Enrollment

Campus Solutions>NDU02SRY>Developmental Course Enrollments

Campus Solutions>NDU02SW>HS Students with College Coursework

As of 09.24.2014

Table 4  
**Full Time Equivalent Enrollments of Part Time and Full Time by Level of Student Based on Total Student Credit Hours<sup>1</sup>**  
 Fall 2014

Institution	Freshmen			Sophomore			Junior			Senior			Graduate			Professional <sup>5</sup>			Total		
	FTE of Part Time <sup>2</sup>	FTE <sup>3</sup>	SCH <sup>4</sup>	FTE of Part Time	FTE	SCH	FTE of Part Time	FTE	SCH	FTE of Part Time	FTE	SCH	FTE of Part Time	FTE	SCH	FTE of Part Time	FTE	SCH	FTE of Part Time	FTE	SCH
BSC	236	1,353	20,297	289	1,413	21,197	12	21	317	65	121	1,818							602	2,909	43,629
DCB	75	329	4,934	24	189	2,840													100	518	7,774
LRSC	374	654	9,806	61	324	4,860													435	978	14,666
NDSCS	333	1,369	20,542	126	903	13,539													459	2,272	34,081
WSC	109	326	4,891	53	253	3,798													163	579	8,688
<b>Subtotal</b>	<b>1,128</b>	<b>4,031</b>	<b>60,470</b>	<b>554</b>	<b>3,082</b>	<b>46,233</b>	<b>12</b>	<b>21</b>	<b>317</b>	<b>65</b>	<b>121</b>	<b>1,818</b>							<b>1,758</b>	<b>7,256</b>	<b>108,838</b>
DSU	65	281	4,219	17	248	3,720	25	239	3,591	67	407	6,099	1	1	12				175	1,176	17,641
MaSU	72	273	4,096	6	144	2,159	13	148	2,219	44	229	3,434	4	4	49				140	798	11,957
MiSU	182	599	8,978	38	493	7,394	42	495	7,427	116	829	12,431	68	185	2,220				448	2,600	38,449
VCSU	71	252	3,781	15	198	2,972	33	178	2,667	61	312	4,679	46	50	595				227	990	14,694
<b>Subtotal</b>	<b>391</b>	<b>1,405</b>	<b>21,074</b>	<b>76</b>	<b>1,083</b>	<b>16,245</b>	<b>113</b>	<b>1,060</b>	<b>15,904</b>	<b>289</b>	<b>1,776</b>	<b>26,643</b>	<b>120</b>	<b>240</b>	<b>2,876</b>				<b>989</b>	<b>5,564</b>	<b>82,741</b>
NDSU	79	2,819	42,287	83	2,821	42,313	97	2,439	36,588	235	3,336	50,044	537	1,179	14,148	2	340	5,714	1,033	12,934	191,094
UND	231	2,213	33,190	113	2,492	37,380	137	2,053	30,801	461	3,325	49,874	632	1,834	22,010	4	503	9,581	1,578	12,420	182,836
<b>Subtotal</b>	<b>310</b>	<b>5,032</b>	<b>75,477</b>	<b>196</b>	<b>5,313</b>	<b>79,693</b>	<b>234</b>	<b>4,493</b>	<b>67,389</b>	<b>697</b>	<b>6,661</b>	<b>99,918</b>	<b>1,169</b>	<b>3,013</b>	<b>36,158</b>	<b>6</b>	<b>843</b>	<b>15,295</b>	<b>2,611</b>	<b>25,355</b>	<b>373,930</b>
<b>NDUS Total</b>	<b>1,830</b>	<b>10,468</b>	<b>157,021</b>	<b>826</b>	<b>9,478</b>	<b>142,171</b>	<b>358</b>	<b>5,574</b>	<b>83,610</b>	<b>1,050</b>	<b>8,559</b>	<b>128,379</b>	<b>1,289</b>	<b>3,253</b>	<b>39,034</b>	<b>6</b>	<b>843</b>	<b>15,295</b>	<b>5,359</b>	<b>38,175</b>	<b>565,509</b>

Note: Numbers have been rounded to the nearest whole number

<p><u>Data Definitions:</u></p> <p><sup>1</sup><b>Full Time Equivalent Enrollments Based on Total Student Credit Hours</b> - Student credit hours accumulated at the undergraduate level divided by 15 plus student credit hours accumulated at the graduate level divided by 12. Every professional student is counted as one FTE.</p> <p><sup>2</sup><b>FTE of Part Time</b> - Full time equivalent enrollment of students enrolled in less than twelve credit hours as of the 20th day of classes.</p> <p><sup>3</sup><b>FTE</b> - Full Time Equivalent based on total student credit hours.</p> <p><sup>4</sup><b>SCH</b> - Scheduled Credit Hours. The sum of all course credit hours in which students are enrolled as of the 20th day of classes.</p> <p><sup>5</sup><b>Professional</b> - A student who has completed a baccalaureate degree and is enrolled in a post-baccalaureate program leading to a professional degree in law, medicine, or pharmacy.</p>	<p><u>Sources:</u></p> <p>Campus Solutions/NDUH2SRA/North Dakota University System Headcount and FTE Enrollments/Institution Totals/FTE of Part Time Students, FTE of Total Credit Hours, &amp; Total Scheduled Credit Hours</p> <p>As of 09.24.2014</p>
--	--

Table 5  
**Trending North Dakota University System Degree Credit<sup>1</sup>**  
 Fall 2014

Institution	2010			2011			2012			2013			2014		
	HC <sup>2</sup>	FT <sup>3</sup>	FTE <sup>4</sup>	HC	FT	FTE	HC	FT	FTE	HC	FT	FTE	HC	FT	FTE
BSC	4,177	2,743	3,208	4,392	2,631	3,209	4,109	2,416	2,990	4,062	2,365	2,955	4,002	2,303	2,909
DCB	863	399	540	812	414	524	774	348	474	793	367	502	753	398	518
LRSC	1,913	524	921	2,056	518	988	1,974	524	973	1,898	486	943	1,988	530	978
NDSCS	2,833	1,703	2,217	3,127	1,791	2,366	3,066	1,807	2,354	3,168	1,712	2,295	3,033	1,706	2,272
WSC	932	391	570	993	415	608	808	418	537	909	430	593	883	421	579
<b>Sub Total</b>	<b>10,718</b>	<b>5,760</b>	<b>7,456</b>	<b>11,380</b>	<b>5,769</b>	<b>7,695</b>	<b>10,731</b>	<b>5,513</b>	<b>7,328</b>	<b>10,830</b>	<b>5,360</b>	<b>7,288</b>	<b>10,659</b>	<b>5,358</b>	<b>7,256</b>
DSU	2,485	1,684	2,054	2,346	1,629	1,959	1,837	1,218	1,454	1,449	1,018	1,201	1,479	980	1,176
MaSU	982	552	704	970	568	704	1,020	614	759	1,065	587	749	1,081	635	798
MiSU	3,866	2,557	3,002	3,657	2,356	2,795	3,560	2,279	2,731	3,533	2,273	2,710	3,410	2,191	2,600
VCSU	1,285	786	957	1,384	829	1,011	1,362	799	995	1,366	761	975	1,378	783	990
<b>Sub Total</b>	<b>8,618</b>	<b>5,579</b>	<b>6,717</b>	<b>8,357</b>	<b>5,382</b>	<b>6,469</b>	<b>7,779</b>	<b>4,910</b>	<b>5,939</b>	<b>7,413</b>	<b>4,639</b>	<b>5,635</b>	<b>7,348</b>	<b>4,589</b>	<b>5,564</b>
NDSU	14,407	11,857	12,708	14,399	11,675	12,606	14,443	11,733	12,707	14,629	11,798	12,797	14,747	11,917	12,934
UND	14,194	10,845	12,018	14,697	10,992	12,319	15,250	11,382	12,729	15,143	11,160	12,606	14,906	10,786	12,420
<b>Sub Total</b>	<b>28,601</b>	<b>22,702</b>	<b>24,726</b>	<b>29,096</b>	<b>22,667</b>	<b>24,925</b>	<b>29,693</b>	<b>23,115</b>	<b>25,436</b>	<b>29,772</b>	<b>22,958</b>	<b>25,403</b>	<b>29,653</b>	<b>22,703</b>	<b>25,354</b>
<b>NDUS Total</b>	<b>47,937</b>	<b>34,041</b>	<b>38,899</b>	<b>48,833</b>	<b>33,818</b>	<b>39,089</b>	<b>48,203</b>	<b>33,538</b>	<b>38,703</b>	<b>48,015</b>	<b>32,957</b>	<b>38,326</b>	<b>47,660</b>	<b>32,650</b>	<b>38,174</b>

Data Definitions:

<sup>1</sup>**Degree Credit** - All institutional activities that can be applied toward college degree or credit based developmental or remedial courses taken by a degree-seeking student as reported to IPEDS

<sup>2</sup>**HC** - Headcount Enrollment - A student counted as one enrollment in degree credit courses at his/her home campus as of the 20th scheduled class day.

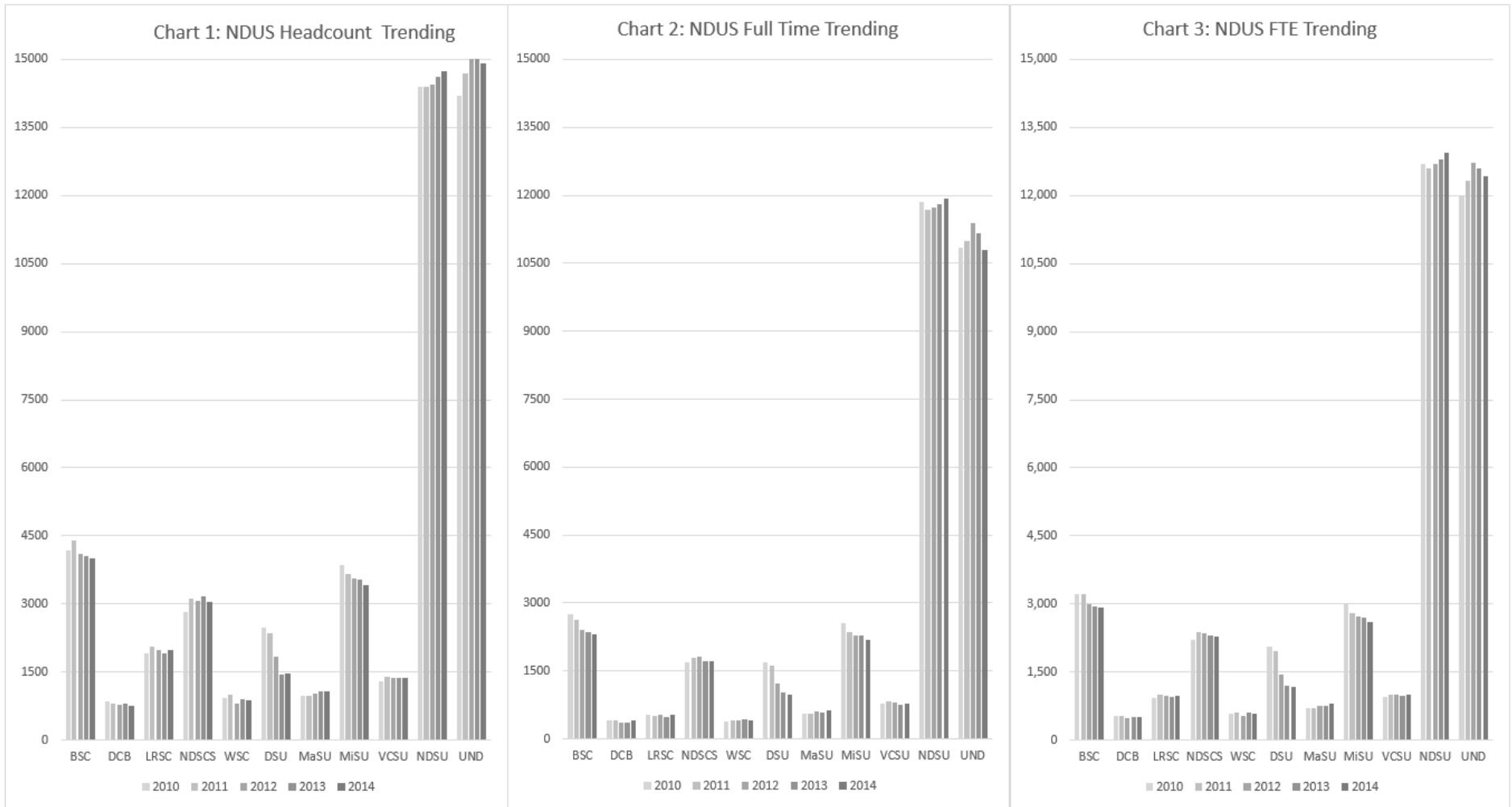
<sup>3</sup>**FT (Full-time)** - Students enrolled following the twentieth day of classes taking twelve or more credit hours.

<sup>4</sup>**FTE (Full-time equivalent enrollment)** - Total accumulated undergraduate student credit hours divided by 15 credit hours plus total graduate credit hours divided by 12. A professional student is counted as one FTE.

Sources:

Campus Solutions > NDUH2SRA > Institution Totals  
 NDUS Fall 2013 Enrollment Report: Table 8B  
 As of 09.24.2014

**Charts 1, 2, 3: Headcount, Full Time, and FTE Trending**  
Fall 2010 to Fall 2014



Data Definitions:

Trending data charts derived from Table 5.

**Headcount Enrollment** - A student counted as one enrollment in degree credit courses at his/her home campus as of the 20th scheduled class day.

**Full Time** - Students enrolled following the twentieth day of classes taking twelve or more credit hours.

**FTE (Full-time equivalent enrollment)** - Total accumulated undergraduate student credit hours divided by 15 credit hours plus total graduate credit hours divided by 12. A professional student is counted as one FTE.

Sources:

Campus Solutions > NDUH2SRA > Institution Totals  
NDUS Fall 2013 Enrollment Report: Table 8B

As of 09.24.2014

Table 6  
**Degree Credit<sup>1</sup> Headcount<sup>2</sup> by Instructional Mode**  
 Fall 2014

<b>Institution</b>	<b>Students with an On-Campus presence</b>	<b>Student without an On-Campus presence</b>	<b>Unduplicated Headcount</b>	<b>Students enrolled in at least one Distance Ed Course</b>
BSC	2,304	1,698	4,002	2,359
DCB	443	310	753	483
LRSC	440	1,548	1,988	1,808
NDSCS	1,609	1,424	3,033	1,856
WSC	470	413	883	699
<b>Subtotal</b>	<b>5,266</b>	<b>5,393</b>	<b>10,659</b>	<b>7,205</b>
DSU	1,155	324	1,479	650
MaSU	626	455	1,081	645
MiSU	2,298	1,112	3,410	1,768
VCSU	808	570	1,378	1,116
<b>Subtotal</b>	<b>4,887</b>	<b>2,461</b>	<b>7,348</b>	<b>4,179</b>
NDSU	13,708	1,039	14,747	5,928
UND	11,733	3,173	14,906	5,289
<b>Subtotal</b>	<b>25,441</b>	<b>4,212</b>	<b>29,653</b>	<b>11,217</b>
<b>NDUS Total</b>	<b>35,594</b>	<b>12,066</b>	<b>47,660</b>	<b>22,601</b>
<b>Percent</b>	<b>74.7%</b>	<b>25.3%</b>	<b>100.0%</b>	<b>47.4%</b>

Data Definitions:

<sup>1</sup>**Degree Credit** - Instructional activities associated with the amount of instructor/student contact time that could be applied toward a college degree or developmental/remedial courses taken by a degree-seeking student as reported to IPEDS.

<sup>2</sup>**Headcount** – Total enrolled students. SBHE Policy 440 defines enrolled students as “students who are registered for classes as of the 20<sup>th</sup> day of the term.”

Sources:

Campus Solutions> NDUH2SRO>Degree Credit Headcount by Category. Note: the Report O CSV file was used in calculating totals. On campus presences includes total count of students enrolled in courses with “TC” instruction mode. All other codes count as Distance Education instruction mode.

As of 09.24.2014

NOTE: Report NDUH2SRO is used in reporting as it includes ONLY degree credit coursework. Report NDUH2SRZ includes non-credit coursework, and thus is not used in this reporting.



Table 7  
**Degree Credit<sup>1</sup> Headcount<sup>2</sup> by E-Learning<sup>3</sup> Delivery Method**  
 Fall 2014

<b>Institution</b>	<b>Interactive Video (IVN)<sup>4</sup></b>	<b>Synchronous Internet<sup>5</sup></b>	<b>Asynchronous Internet<sup>6</sup></b>	<b>Combo<sup>7</sup></b>	<b>Duplicated Total</b>	<b>Unduplicated Total</b>
BSC	127	23	1,873		2,023	2,004
DCB	145		173		318	288
LRSC	75		537		612	577
NDSCS	112		666	41	819	795
WSC	90		446		536	514
<b>Subtotal</b>	<b>549</b>	<b>23</b>	<b>3,695</b>	<b>41</b>	<b>4,308</b>	<b>4,178</b>
DSU	72		487		559	518
MaSU	139	12	418		569	511
MiSU	41	46	1,068		1,155	1,105
VCSU	108		816	9	933	875
<b>Subtotal</b>	<b>360</b>	<b>58</b>	<b>2,789</b>	<b>9</b>	<b>3,216</b>	<b>3,009</b>
NDSU	26	52	3,829	1,581	5,488	5,195
UND	44	759	4,087		4,890	4,701
<b>Subtotal</b>	<b>70</b>	<b>811</b>	<b>7,916</b>	<b>1,581</b>	<b>10,378</b>	<b>9,896</b>
<b>NDUS Total</b>	<b>979</b>	<b>892</b>	<b>14,400</b>	<b>1,631</b>	<b>17,902</b>	<b>17,083</b>

Data Definitions:

<sup>1</sup>**Degree Credit** - Instructional activities associated with the amount of instructor/student contact time that could be applied toward a college degree or developmental/remedial courses taken by a degree-seeking student as reported to IPEDS.

<sup>2</sup>**Headcount** - Total enrolled students. SBHE Policy 440 defines enrolled students as “students who are registered for classes as of the 20<sup>th</sup> day of the term.”

<sup>3</sup>**E-Learning** - Instruction in an electronic format via the internet. Includes synchronous and asynchronous internet, and interactive video network (IVN).

<sup>4</sup>**Interactive Video (IVN)** - Two way video system in which the participants can synchronously interact.

<sup>5</sup>**Synchronous Internet** - Internet based class where instructor and students are online at the same time in order to interact.

<sup>6</sup>**Asynchronous Internet** - Internet based class where instructor and students are not online at the same time.

<sup>7</sup>**Combo** - a course that uses a combination of both traditional face to face and e-learning.

Sources:

Campus Solutions>NDU02SRQ>E-learning Degree Credit Headcount by Delivery Method

As of 09.24.2014

Table 8  
Undergraduate Headcount Enrollment by State  
Fall 2014

State	Two Year Colleges					Regional Universities				Research Universities		NDUS Totals
	BSC	DCB	LRSC	NDSCS	WSC	DSU	MASU	MISU	VCSU	NDSU	UND	
Alabama	6	5	1	6			1	1		1	16	37
Alaska	6	3			1	4	12	2	10	10	30	78
Arizona	11	3		3	2	10	6	12	15	12	62	136
Arkansas	9	1			2	2	3	1		2	5	25
California	40	2	9	4	6	48	36	92	45	37	257	576
Colorado	43	11	3	7	4	9	5	10	8	22	110	232
Connecticut	21	1			1	2				1	12	38
Delaware	2	1	1					1			6	11
District of Columbia		2	1							1	5	9
Florida	40	22	4	16	4	7	29	34	11	9	56	232
Georgia	18	5	1	3	2		1	7	2	1	34	74
Hawaii	4	1	1			3	5	1	8	4	23	50
Idaho	8	1		2	4	5	4	3	2	2	20	51
Illinois	35	9	3	8	3	3	15	13	6	29	149	273
Indiana	16	7	2	4	1	6	2	4	1	5	22	70
Iowa	9		4	1				4	2	17	40	77
Kansas		2	2			2	1	3	3	7	23	43
Kentucky	7	3				2	2				17	31
Louisiana	22	2		5			1	3		1	10	44
Maine	1							4			8	13
Maryland	15	9	1	4		2	4	6		1	31	73
Massachusetts	9			2		1	1	2	2	1	22	40
Michigan	20	16	1	2	4	4	6	3	3	11	63	133
Minnesota	75	11	186	672	15	20	159	79	163	5,738	4,315	11,433
Mississippi	3			1	2	1		1			5	13
Missouri	23	2	1	3	2			4	2	10	38	85
Montana	38	16	2	31	53	131	5	78	6	47	83	490
Nebraska	9		2	1			1	5	1	21	19	59
Nevada	7	4	2		1	12	3	5	1	8	20	63
New Hampshire	14	1	1		1		1	1			13	32
New Jersey	4	3	1	1	1		1	2	5	3	30	51
New Mexico	10		1			1	1	3	1	2	17	36
New York	45	3	3	2	6	3	5	9	1	4	64	145
North Carolina	16	8			3	2	2	11	9	2	38	91
<b>NORTH DAKOTA</b>	<b>3,131</b>	<b>521</b>	<b>1,685</b>	<b>2,131</b>	<b>706</b>	<b>1,062</b>	<b>665</b>	<b>2,338</b>	<b>757</b>	<b>5,374</b>	<b>4,629</b>	<b>22,999</b>
Ohio	10	19		6		3	1	8	2	3	29	81
Oklahoma	25			1	1	1	1	2		2	19	52
Oregon	3	4			2	6	4	12	2	6	34	73
Pennsylvania	20	2		1		2		3	3	6	49	86
Rhode Island		1		4							5	10
South Carolina	9	5	3	1	1		1	6	1		16	43
South Dakota	51	2	11	74	1	25	5	8	13	198	124	512
Tennessee	5	2			1			1	1		13	23
Texas	45	10	3	10	6	7	7	19	13	12	127	259
Utah	20				11	5		12		1	20	69
Vermont											5	5
Virginia	20	7	1	4	1	1	2	5	1	6	28	76
Washington	21	11	8	2	2	7	8	22	7	18	140	246
West Virginia	4			1				3		1	5	14
Wisconsin	20	2	9	8	6	6	17	10	10	90	233	411
Wyoming	17		4	1	7	18	3	3	76	6	47	182
APO <sup>1</sup> AE/AP	6		1	1		1	1	8		1	16	35
Canada	3	11	13	2	13	15	20	182	27	19	89	394
Guam	1						1					2
Puerto Rico								2		1	1	4
Virgin Islands											2	2
Other International	5	2	17	7	7	36	8	68	14	370	238	772
Not Reported				1						1	5	7
<b>Campus Totals</b>	<b>4,002</b>	<b>753</b>	<b>1,988</b>	<b>3,033</b>	<b>883</b>	<b>1,475</b>	<b>1,056</b>	<b>3,116</b>	<b>1,234</b>	<b>12,124</b>	<b>11,537</b>	<b>41,201</b>

Data Definitions:

<sup>1</sup>APO AE/AP – A military post office address.

Note: Home state reported by student; to reconcile with Table 1, add Table 9 totals

Sources:

Campus Solutions; NDUH2SRG > North Dakota University System Enrollment Totals by State/country Enrollment from History. As of 09.24.2014

Table 9  
**Graduate<sup>1</sup> and Professional<sup>2</sup> Headcount Enrollment by State**  
 Fall 2014

State	Regional Universities				Research Universities		NDUS Totals
	DSU	MASU	MISU	VCSU	NDSU	UND	
Alabama					4	15	19
Alaska						7	7
Arizona			4		3	39	46
Arkansas					3	1	4
California			7	1	14	76	98
Colorado			4		15	45	64
Connecticut			2	1	7	9	19
Delaware			1		1	4	6
District of Columbia					3	2	5
Florida			3		10	38	51
Georgia			2	2	8	21	33
Hawaii					1	3	4
Idaho				1	4	17	22
Illinois			2	2	21	35	60
Indiana			1	1	5	8	15
Iowa			2		16	24	42
Kansas					23	9	32
Kentucky					1	12	13
Louisiana					1	2	3
Maine						6	6
Maryland					12	22	34
Massachusetts			3		28	12	43
Michigan			6	1	32	21	60
Minnesota		6	8	12	568	592	1,186
Mississippi					1	4	5
Missouri			2		16	14	32
Montana			8	3	15	46	72
Nebraska					7	18	25
Nevada					1	16	17
New Hampshire					2	6	8
New Jersey				3	7	12	22
New Mexico					1	10	11
New York			1	4	16	39	60
North Carolina			2		4	32	38
<b>NORTH DAKOTA</b>	<b>4</b>	<b>19</b>	<b>145</b>	<b>86</b>	<b>1,110</b>	<b>1,587</b>	<b>2,951</b>
Ohio			2	2	20	26	50
Oklahoma			1	2	5	13	21
Oregon					2	20	22
Pennsylvania			3	1	31	21	56
Rhode Island			1		1	1	3
South Carolina			1	1	6	8	16
South Dakota			1	5	27	60	93
Tennessee			3		6	13	22
Texas			5	1	28	42	76
Utah			2		1	19	22
Vermont				2	2	1	5
Virginia			2	4	10	24	40
Washington			6		7	30	43
West Virginia			1	1		3	5
Wisconsin			3	2	74	38	117
Wyoming			3	4	6	29	42
APO <sup>3</sup> AE/AP				2	19	14	35
Canada			49		4	75	128
Guam						1	1
Puerto Rico					2		2
Virgin Islands						1	1
Other International			8		412	126	546
<b>Campus Totals</b>	<b>4</b>	<b>25</b>	<b>294</b>	<b>144</b>	<b>2,623</b>	<b>3,369</b>	<b>6,459</b>

**Data Definitions:**

<sup>1</sup>**Graduate** - A student who holds a bachelor's degree or first professional degree, or equivalent, and is enrolled in a graduate degree program.

<sup>2</sup>**Professional** - A student who has completed a baccalaureate degree and is enrolled in a post-baccalaureate program leading to a professional degree in law, medicine, or pharmacy.

<sup>3</sup>**APO AE/AP** - A military post office address.

**Note:** Home state reported by student; to reconcile with Table 1, add Table 8 totals

**Sources:**

Campus Solutions; NDUH2SRG > North Dakota University System Enrollment Totals by State/Country Enrollment from History  
 As of 09.24.2014

Table 10  
**Headcount Enrollments<sup>1</sup> for North Dakota Students by County of Residence**  
 Fall 2014

County	Two Year Colleges					Regional Universities				Research Universities		NDUS Total
	BSC	DCB	LRSC	NDSCS	WSC	DSU	MASU	MISU	VCSU	NDSU	UND	
Adams	12		1	3	2	20	2			9	8	57
Barnes	6	18	4	36		3	9	5	220	69	39	409
Benson	10	8	71	9		1	17	9	5	23	23	176
Billings	1		1	2		3				1	1	9
Bottineau	15	95	2	13	2	2	5	47	3	40	36	260
Bowman	21		2	4	1	47	2	3		18	19	117
Burke	9	5			15			14	4	5	6	58
Burleigh	1,430	14	47	59	6	151	10	128	40	559	456	2,900
Cass	34	16	52	872	4	9	89	49	152	3,738	701	5,716
Cavalier	1		38	5	1		11			39	38	133
Dickey	2	1	1	56			2	3	13	52	18	148
Divide	7	2		6	20	2	2	1	1	9	7	57
Dunn	21			3	3	29	2		2	16	15	91
Eddy	4	3	25	3	1	2	1	1	6	29	7	82
Emmons	82	3	17	17		11	1	1	3	43	10	188
Foster	8	2	50	11			4	5	4	46	25	155
Golden Valley	16			1		12		1	1	15	10	56
Grand Forks	12	3	570	29	1	2	102	15	17	133	3,234	4,118
Grant	34		2	6		6	3	2	3	11	3	70
Griggs	2	2	26	8		1	3	2	6	17	8	75
Hettinger	19			9		44				12	6	90
Kidder	28		16	5		2	1	2	6	15	6	81
Lamoure	9	3	3	20		1	1	2	21	30	20	110
Logan	33	1	16	11				4	5	18	3	91
McHenry	20	37	26	6	2	1	2	82	4	34	23	237
McIntosh	31	5	6	23	2		1		5	25	9	107
McKenzie	21	4	2	4	39	4	5	16	2	13	22	132
McLean	116	17	3	11	6	2	2	35	9	41	28	270
Mercer	134	1	15	12	27	8	2	15	7	51	54	326
Morton	577	3	8	22	3	59	5	41	14	170	89	991
Mountrail	25	10	2	3	43	6		23	2	27	24	165
Nelson	2	2	28	4			12	3	4	18	24	97
Oliver	21						1	1	1	2	7	33
Pembina	2		36	12		1	30	3	10	43	79	216
Pierce	13	48	22	9		1	2	15	4	17	28	159
Ramsey	5	2	290	19	1		45	11	14	55	124	566
Ransom	2	1		57		1	21		19	54	13	168
Renville	10	26	1	5	1	1		28		18	13	103
Richland	7	1	4	416		2	15	4	42	166	81	738
Rolette	16	39	21	9			2	19	17	33	79	235
Sargent	2	3	5	71			5	1	24	67	16	194
Sheridan	15	1	5	1		1		3	1	5	2	34
Sioux	8	1	2			1		2		4	6	24
Slope	1			1		1			1	3		7
Stark	92	2	10	15	3	602	6	21	10	123	111	995
Steele	1		11	7			19		4	15	10	67
Stutsman	59	18	26	121	1	4	4	12	80	106	64	495
Towner	4	3	26	6		3	5	2	2	12	9	72
Traill	4	2	21	8			162	7	8	82	65	359
Walsh	7		96	15			44	3	14	68	141	388
Ward	81	108	26	51	79	11	5	1,754	21	171	267	2,574
Wells	19	4	37	16	1	1		13	2	38	16	147
Williams	20	6	10	19	442	8	22	75	10	74	113	799
Not-Reported		1	2							2		5
<b>Grand Total</b>	<b>3,131</b>	<b>521</b>	<b>1,685</b>	<b>2,131</b>	<b>706</b>	<b>1,066</b>	<b>684</b>	<b>2,483</b>	<b>843</b>	<b>6,484</b>	<b>6,216</b>	<b>25,950</b>

**Data Definitions:**

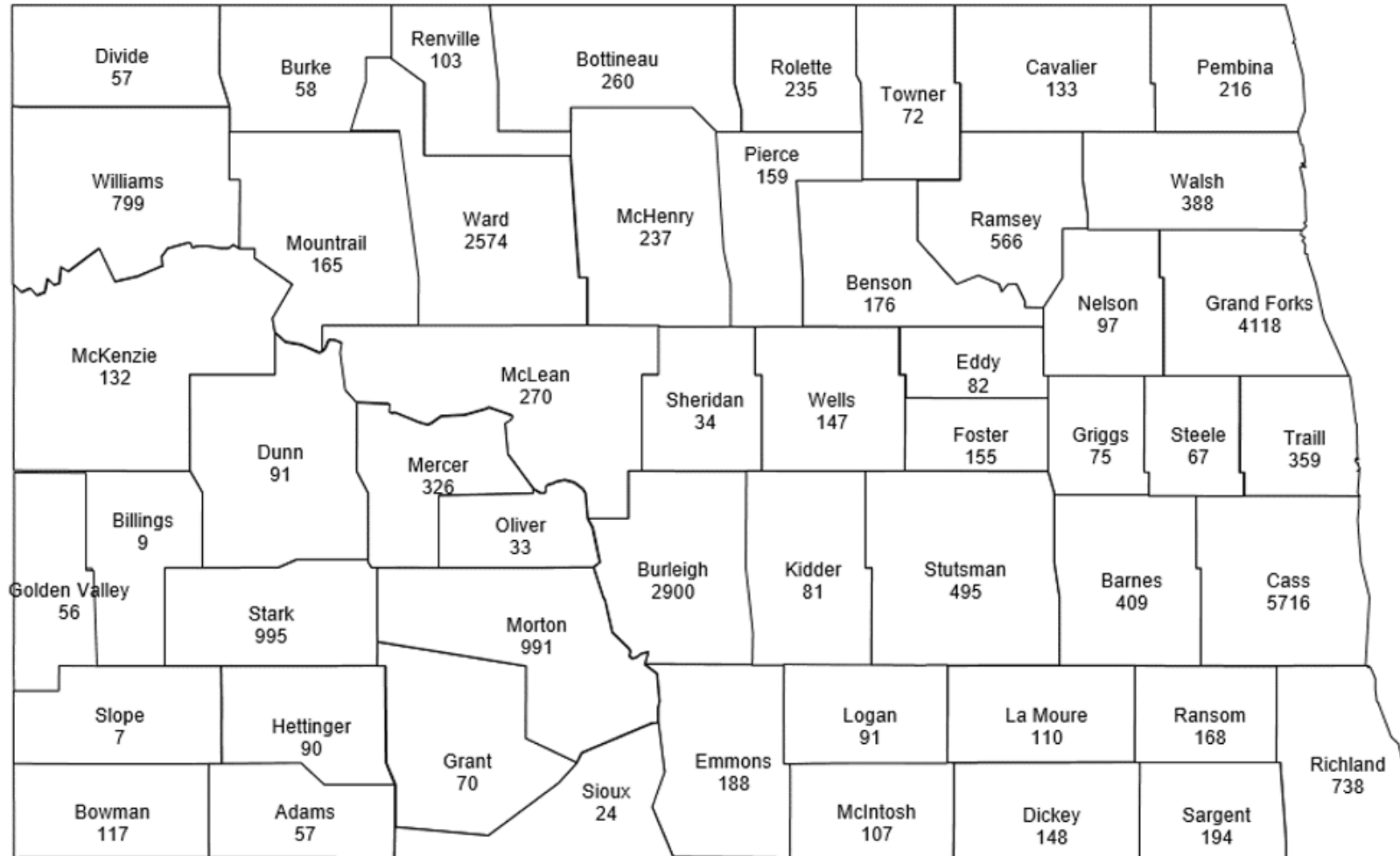
<sup>1</sup>**Headcount Enrollment** - A student counted as one enrollment in degree credit courses at his/her home campus as of the 20th scheduled day of class.

**Note:** County of Residence reported by student.

**Sources:**

Campus Solutions; NDUH2SRG > North Dakota University System Enrollment Totals by State/country Enrollment from History As of 09.24.2014

Figure 1  
**All Headcount Enrollments<sup>1</sup> for North Dakota Students by County of Residence**  
 Fall 2014



Data Definitions:

<sup>1</sup>**Headcount Enrollment** - A student counted as one enrollment in degree credit courses at his/her home campus as of the 20th scheduled day of class.

Note: County of Residence reported by student; County of Residence is unspecified for 5 North Dakota students.

Total headcount=25,950

Sources:

Campus Solutions; NDUH2SRG>North Dakota University System Enrollment Totals by State/county Enrollment from History Data.

As of 09.24.2014

Table 11  
**All Headcount Enrollments<sup>1</sup> for North Dakota Students by County of Residence**  
 Fall 2010 through Fall 2014

<b>ND County</b>	<b>2010</b>	<b>2011</b>	<b>2012</b>	<b>2013</b>	<b>2014</b>	<b>ND County</b>
Adams	74	78	66	47	57	Adams
Barnes	441	435	382	416	409	Barnes
Benson	190	183	166	160	176	Benson
Billings	22	10	8	9	9	Billings
Bottineau	337	337	323	306	260	Bottineau
Bowman	155	134	103	118	117	Bowman
Burke	72	67	71	67	58	Burke
Burleigh	4,084	4,175	3,028	2,882	2,900	Burleigh
Cass	5,979	6,100	5,753	5,790	5,716	Cass
Cavalier	190	178	154	160	133	Cavalier
Dickey	166	174	175	164	148	Dickey
Divide	74	70	56	53	57	Divide
Dunn	147	154	116	91	91	Dunn
Eddy	122	108	89	89	82	Eddy
Emmons	183	190	192	170	188	Emmons
Foster	161	157	149	147	155	Foster
Golden Valley	77	81	57	58	56	Golden Valley
Grand Forks	4,311	4,419	4,367	4,419	4,118	Grand Forks
Grant	71	66	55	59	70	Grant
Griggs	84	90	89	89	75	Griggs
Hettinger	129	119	103	86	90	Hettinger
Kidder	106	107	79	82	81	Kidder
LaMoure	189	152	117	124	110	LaMoure
Logan	58	69	70	65	91	Logan
McHenry	274	302	258	266	237	McHenry
McIntosh	101	107	99	87	107	McIntosh
McKenzie	158	147	108	116	132	McKenzie
McLean	376	332	296	262	270	McLean
Mercer	460	416	329	317	326	Mercer
Morton	1,254	1,320	1,045	993	991	Morton
Mountrail	218	197	171	188	165	Mountrail
Nelson	165	147	121	96	97	Nelson
Oliver	72	61	47	41	33	Oliver
Pembina	239	225	202	206	216	Pembina
Pierce	235	212	194	171	159	Pierce
Ramsey	663	629	605	596	566	Ramsey
Ransom	200	219	163	160	168	Ransom
Renville	148	118	113	95	103	Renville
Richland	820	759	746	717	738	Richland
Rolette	294	283	266	242	235	Rolette
Sargent	216	204	185	205	194	Sargent
Sheridan	50	55	42	39	34	Sheridan
Sioux	32	46	25	26	24	Sioux
Slope	6	5	7	8	7	Slope
Stark	1,279	1,137	975	885	995	Stark
Steele	55	52	58	62	67	Steele
Stutsman	840	813	544	517	495	Stutsman
Towner	90	79	86	87	72	Towner
Trail	441	409	386	363	359	Trail
Walsh	428	419	414	401	388	Walsh
Ward	3,058	2,873	2,656	2,647	2,574	Ward
Wells	227	187	156	151	147	Wells
Williams	904	889	760	768	799	Williams
Unspecified	91	55	33	47	5	Unspecified
<b>Total</b>	<b>30,725</b>	<b>30,350</b>	<b>26,825</b>	<b>26,410</b>	<b>25,950</b>	<b>Total</b>
<b>Percent annual</b>	<b>2.30%</b>	<b>-1.22%</b>	<b>-11.61%</b>	<b>-1.55%</b>	<b>-1.74%</b>	

Data Definitions:

<sup>1</sup>**Headcount Enrollment** - A student counted as one enrollment in degree credit courses at his/her home campus as of the 20th scheduled day of class.

**Note:** County of Residence reported by student

Sources:

Campus Solutions; NDUH2SRG > North Dakota University System Enrollment Totals by State/country Enrollment from History

NDUS 2013 Fall Enrollment Report>Table 13B

As of 09.24.2014

Table 12  
**All Headcount Enrollments by Tuition Residency Status**  
 Fall 2014

Residency Status	BSC	DCB	LRSC	NDSCS	WSC	DSU	MaSU	MiSU <sup>1</sup>	VCSU	NDSU	UND	Total	Perce nt of Total
<b>Resident</b>													
North Dakota	3,037	509	1,533	2,119	571	990	671	3,410	820	5,994	5,890	25,544	53.6%
North Dakota Military	9	7	124	25	2	3	8		5	262	757	1,202	2.5%
Alumni Dependent										13	9	22	<0.1%
<b>Resident Sub-Total</b>	<b>3,046</b>	<b>516</b>	<b>1,657</b>	<b>2,144</b>	<b>573</b>	<b>993</b>	<b>679</b>	<b>3,410</b>	<b>825</b>	<b>6,269</b>	<b>6,656</b>	<b>26,768</b>	<b>56.2%</b>
<b>Non Resident</b>													
Minnesota Reciprocity	6	4	35	482		14	115		137	5,696	4,337	10,826	22.7%
Minnesota Professional										150	47	197	0.4%
Contiguous Midwest Higher Ed <sup>2</sup>	92	22	17	98	65	174	23		39	267	362	1,159	2.4%
Compact	205	28	147	143	50	23	99		67	851	833	2,446	5.1%
Western Exchange <sup>3</sup>	213	39	29	17	81	154	86		189	127	616	1,551	3.3%
Non Resident	440	144	103	149	114	121	79		121	1,387	2,055	4,713	9.9%
<b>Non Resident Total</b>	<b>956</b>	<b>237</b>	<b>331</b>	<b>889</b>	<b>310</b>	<b>486</b>	<b>402</b>	<b>0</b>	<b>553</b>	<b>8,478</b>	<b>8,250</b>	<b>20,892</b>	<b>43.8%</b>
<b>Totals</b>	<b>4,002</b>	<b>753</b>	<b>1,988</b>	<b>3,033</b>	<b>883</b>	<b>1,479</b>	<b>1,081</b>	<b>3,410</b>	<b>1,378</b>	<b>14,747</b>	<b>14,906</b>	<b>47,660</b>	<b>100.0%</b>

Data Definitions:

<sup>1</sup>**MiSU:** Beginning August 2009, Minot State University students pay the North Dakota in-state tuition rate regardless of residency when enrolling in on-campus courses.

<sup>2</sup>**Midwest Higher Ed (MHEC)** - A non-profit regional organization, established by compact statute, to assist Midwestern states in advancing higher education through interstate cooperation and resource sharing. Members are: Illinois, Indiana, Iowa, Kansas, Michigan, Minnesota, Missouri, Nebraska, North Dakota, Ohio, South Dakota, and Wisconsin.

<sup>3</sup>**Western Exchange (WICHE)** - A regional organization created by the Western Regional Education Compact and adopted in the 1950s by western states. WICHE was created to facilitate resources sharing among the higher education systems of the west. Members are: Alaska, Arizona, California, Colorado, Hawaii, Idaho, Montana, Nevada, New Mexico, North Dakota, Oregon, South Dakota, Utah, Washington, and Wyoming.

Sources:

Campus Solutions> NDU02SRD> Student Data Statistics.

As of 09.24.2014

Table 13  
**NDUS Headcount Enrollment<sup>1</sup> by Age**  
 Fall 2014

Age <sup>2</sup>	BSC	DCB	LRSC	NDSCS	WSC	DSU	MaSU	MiSU	VCSU	NDSU	UND	Age Group Total	Percent of Total
Under 18	354	118	700	717	218	171	163	179	38	32	50	2,740	5.7%
18-19	1,319	234	414	1,128	240	295	260	631	325	4,423	3,349	12,618	26.5%
20-21	646	111	318	518	122	330	233	829	354	4,413	3,818	11,692	24.5%
22-24	324	77	200	205	99	316	192	793	214	2,951	3,183	8,554	17.9%
25-29	388	59	148	138	89	161	85	454	143	1,407	1,926	4,998	10.5%
30-34	325	31	74	106	45	86	53	216	105	674	1,094	2,809	5.9%
35-39	212	37	36	51	30	40	36	128	60	335	591	1,556	3.3%
40-49	278	40	59	79	25	60	38	127	96	342	620	1,764	3.7%
50-64	148	41	35	82	15	19	21	53	41	163	264	882	1.9%
> 65	8	5	4	9	0	1	0	0	2	7	11	47	0.1%
<b>Campus Total</b>	<b>4,002</b>	<b>753</b>	<b>1,988</b>	<b>3,033</b>	<b>883</b>	<b>1,479</b>	<b>1,081</b>	<b>3,410</b>	<b>1,378</b>	<b>14,747</b>	<b>14,906</b>	<b>47,660</b>	<b>100.0%</b>

**Methodology Note:** NDUS reporting truncates student age to whole year classification.

Data Definitions:

<sup>1</sup>**Headcount Enrollment** - A student counted as one enrollment in degree credit courses at his/her home campus as of the 20th scheduled day of class

<sup>2</sup>**Age** - Students' age is as of the 20th day of classes during the specified term.

Sources:

Campus Solutions> NDUH2SRN, North Dakota University System Enrollment Summary of Students by Age.  
 As of 09.24.2014

<b>Descriptive Statistics</b>	
<b>Mean</b>	23.5
<b>Median</b>	21
<b>Mode</b>	19
<b>Range</b>	70
<b>Minimum</b>	15
<b>Maximum</b>	85
<b>Count</b>	47,653



Table 14  
**NDUS Headcount Enrollment<sup>1</sup> by Race<sup>2</sup>**  
 Fall 2014

NDUS Institution Classification	White <sup>3</sup>	Non Resident Alien <sup>4</sup>	Not Specified <sup>5</sup>	Hispanic or Latino <sup>6</sup>	Black or African American <sup>7</sup>	Two or more races <sup>8</sup>	American Indian or Alaska Native <sup>9</sup>	Asian <sup>10</sup>	Native Hawaiian or Pacific Islander <sup>11</sup>	Total
Two Year Colleges	8,858	154	307	268	517	291	169	81	14	10,659
Regional Universities	5,549	565	160	342	340	207	97	64	24	7,348
Research Universities	23,646	2,055	1,102	665	705	664	362	427	27	29,653
<b>Total</b>	<b>38,053</b>	<b>2,774</b>	<b>1,569</b>	<b>1,275</b>	<b>1,562</b>	<b>1,162</b>	<b>628</b>	<b>572</b>	<b>65</b>	<b>47,660</b>
Percent of Total	79.8%	5.8%	3.3%	2.7%	3.3%	2.4%	1.3%	1.2%	0.1%	100.0%

Data Definitions:

<sup>1</sup>**Headcount enrollment** - A student counted as one enrollment in degree credit courses at his/her home campus as of the 20th scheduled class day.

<sup>2</sup>**Race** - Group or groups with which a person identifies or having origins as identified as valid values for IPEDS reporting.

<sup>3</sup>**White** - A person having origins in any of the original peoples of Europe, the Middle East, or North Africa.

<sup>4</sup>**Non Resident Alien** - A citizen or national of the U.S. and who is in this country on a visa or temporary basis and does not have the right to remain indefinitely. Note: Non-resident aliens are to be reported separately in the places provided, rather than in any of the racial/ethnic categories described above.

<sup>5</sup>**Not Specified** - Student did not identify with a selected race.

<sup>6</sup>**Hispanic or Latino** - Cuban, Mexican, Puerto Rican, South or Central American, or other Spanish culture or origin, regardless of race.

<sup>7</sup>**Black or African American** - A person having origins in any of the black racial groups of Africa.

<sup>8</sup>**Two or more races** - A person having more than one origin.

<sup>9</sup>**American Indian or Alaska Native** - Original peoples of North and South America (including Central America) who maintains cultural identification through tribal affiliation or community attachment.

<sup>10</sup>**Asian** - Having origin in the Far East, Southeast Asia, or the Indian Subcontinent, including, for example, Cambodia, China, India, Japan, Korea, Malaysia, Pakistan, the Philippine Islands, Thailand, and Vietnam. <sup>11</sup>**Native Hawaiian or Pacific Islander** - A person having origins in any of the original peoples of Hawaii, Guam, Samoa, or other Pacific Islands.

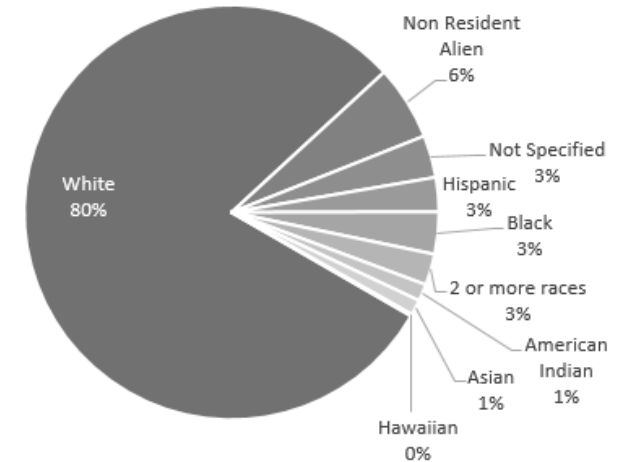
**Note:** Race reported by student.

Sources:

Campus Solutions > NDUH2SRD, North Dakota University System Student Data Statistics > Enrollment.

As of 09.24.2014

Figure 2: Campus headcount enrollment by race as a percentage of total headcount



## Glossary

**< 10** - Total occurrences is less than ten (*data is suppressed due to protocols for reporting occurrences with a population of less than ten in order to protect student identity*)

**American Indian or Alaska Native** - Original peoples of North and South America (including Central America) who maintains cultural identification through tribal affiliation or community attachment.

**APO AE/AP** – A military post office address.

**Asian** - Having origin in the Far East, Southeast Asia, or the Indian Subcontinent, including, for example, Cambodia, China, India, Japan, Korea, Malaysia, Pakistan, the Philippine Islands, Thailand, and Vietnam.

**Asynchronous Internet** - Internet based class where instructor and students are not online at the same time.

**Beginning Freshmen** - Full-time/Part-time student attending any institution for the first time as a freshman. Since part-time students are included, this result is not the same as the IPEDS first-time full-time count.

**Black or African American** - A person having origins in any of the black racial groups of Africa.

**Collaborative Developmental Enrollments** - A student who enrolls in a course at a NDUS institution other than his/her home institution for the purpose of completing developmental courses only. These students are non-degree seeking students at the institution at which they are taking collaborative developmental courses. Students in this category are not included in the official headcount because of their non-degree status.

**Collaborative Enrollment** - A student who enrolls in a course at a NDUS institution other than his/her home institution.

**Combo** - a course that uses a combination of both traditional face to face and e-learning.

**Correspondence** - Instruction through mail or fax

**Degree Credit** - Instructional activities associated with the amount of instructor/student contact time that could be applied toward a college degree or developmental/remedial courses taken by a degree-seeking student as reported to IPEDS.

**Developmental** - Basic academic skills courses designed to prepare students to complete postsecondary academic degree-credit courses. Does not count as degree credit coursework.

**Distance Education** - courses where a student is not located in a traditional face to face classroom on his/her home institution. Includes face to face off campus, correspondence, interactive video network, synchronous and asynchronous internet.

**Duplicated** - An enrollment count in which an individual student may be counted more than once because they are enrolled in more than one medium (face-to-face, e-learn, etc) or more than one campus.

**Enrollments** – Total number of enrollments into courses. One student will account for multiple enrollments when he/she is enrolled in more than one course.

**E-Learn** - Instruction in an electronic format via the internet. Includes synchronous and asynchronous internet, and interactive video network (IVN).

**Face to Face Off Campus** - A classroom environment where the instructor and students are physically located in the same place in an off campus location

**FTE** - Full Time Equivalent based on total student credit hours.

**FTE of Part Time** - Full time equivalent enrollment of students enrolled in less than twelve credit hours as of the 20th day of classes.

**Full Time** - Students enrolled in 12 or more credit hours as of the 20th scheduled day of class

**Full Time Equivalent Enrollments Based on Total Student Credit Hours** - Student credit hours accumulated at the undergraduate level divided by 15 plus student credit hours accumulated at the graduate level divided by 12. Every professional student is counted as one FTE.

**Graduate** - A student who holds a bachelor's degree or first professional degree, or equivalent, and is enrolled in a graduate degree program.

**Headcount** - Total enrolled students. SBHE Policy 440 defines enrolled students as "students who are registered for classes as of the 20<sup>th</sup> day of the term."

**Headcount Enrollment** - A student counted as one enrollment in degree credit courses at his/her home campus as of the 20th scheduled day of class

**High School Students Enrolled in College Courses** - A high school student who enrolls in college courses. Includes both dual credit and early entry. Total include only those students enrolled in NDUS institutions.

**Hispanic or Latino** - Cuban, Mexican, Puerto Rican, South or Central American, or other Spanish culture or origin, regardless of race.

**Interactive Video (IVN)** - Two way video system in which the participants can synchronously interact.

**Midwest Higher Ed (MHEC)** - A non-profit regional organization, established by compact statute, to assist Midwestern states in advancing higher education through interstate cooperation and resource sharing. Members are: Illinois, Indiana, Iowa, Kansas, Michigan, Minnesota, Missouri, Nebraska, North Dakota, Ohio, South Dakota, and Wisconsin.

**Native Hawaiian or Pacific Islander** - A person having origins in any of the original peoples of Hawaii, Guam, Samoa, or other Pacific Islands.

**New Undergraduate Student Enrollments** – Includes both incoming freshmen and undergraduate transfer students for the reporting term.

**Non Resident Alien** - A citizen or national of the U.S. and who is in this country on a visa or temporary basis and does not have the right to remain indefinitely. Note: Non-resident aliens are to be reported separately in the places provided, rather than in any of the racial/ethnic categories described above.

**Not Specified** - Student did not identify with a selected race.

**Part Time** - Students enrolled in less than 12 credit hours as of the 20th scheduled day of class

**Professional** - A student who has completed a baccalaureate degree and is enrolled in a post-baccalaureate program leading to a professional degree in law, medicine, or pharmacy.

**Race** - Group or groups with which a person identifies or having origins as identified as valid values for IPEDS reporting.

**SCH** - Scheduled Credit Hours. The sum of all course credit hours in which students are enrolled as of the 20th day of classes.

**Students Enrolled in Developmental and Degree Credit** - Students who are enrolled in both developmental and degree credit courses during the reporting term.

**Synchronous Internet** - Internet based class where instructor and students are online at the same time in order to interact.

**Transfer** - A student entering an institution for the first time but known to have previously attended a postsecondary institution at the same level. This student may transfer with or without credit.

**Two or more races** - A person having more than one origin.

**Western Exchange (WICHE)** – A regional organization created by the Western Regional Education Compact and adopted in the 1950s by western states. WICHE was created to facilitate resources sharing among the higher education systems of the west. Members are: Alaska, Arizona, California, Colorado, Hawaii, Idaho, Montana, Nevada, New Mexico, North Dakota, Oregon, South Dakota, Utah, Washington, and Wyoming.

**White** - A person having origins in any of the original peoples of Europe, the Middle East, or North Africa.