

**NORTH DAKOTA UNIVERSITY SYSTEM**  
**DEGREE CREDIT SPRING ENROLLMENT REPORT**  
**Five Year Trend: 2007-2013**

INSTITUTION	2008			2009			2010			2011			2012			2013		
	HC	FT	FTE	HC	FT	FTE	HC	FT	FTE	HC	FT	FTE	HC	FT	FTE	HC	FT	FTE
Bismarck State College	3,531	2,210	2,687	3,586	2,284	2,728	3,899	2,487	2,957	3,985	2,486	2,965	3,887	2,275	2,806	3,755	2,063	2,642
Dakota College at Bottineau	610	267	367	598	282	384	755	307	438	868	359	510	783	333	458	752	290	420
Dickinson State University	2,462	1,684	2,021	2,475	1,726	2,058	2,278	1,634	1,941	2,248	1,562	1,879	2,008	1,391	1,667	1,622	1,041	1,267
Lake Region State College	1,701	390	787	1,635	416	780	1,695	452	836	1,851	475	902	2,021	490	984	1,882	461	910
Mayville State University	783	424	549	753	397	518	824	469	590	934	500	633	929	521	664	981	534	689
Minot State University	3,323	2,222	2,599	3,322	2,136	2,534	3,477	2,199	2,639	3,636	2,316	2,763	3,369	2,190	2,599	3,384	2,119	2,569
ND State College of Science	2,315	1,574	1,927	2,272	1,464	1,818	2,401	1,475	1,866	2,639	1,554	1,991	2,811	1,606	2,076	2,842	1,562	2,031
North Dakota State University	11,699	9,468	10,333	12,562	10,187	11,048	13,411	10,801	11,725	13,533	10,768	11,735	13,413	10,656	11,602	13,576	10,662	11,656
University of North Dakota	11,847	9,040	10,164	12,076	9,396	10,449	12,733	9,707	10,847	13,458	10,034	11,267	13,950	10,074	11,528	14,378	10,415	11,891
Valley City State University	946	651	757	959	636	767	1,034	639	771	1,221	718	881	1,306	758	933	1,287	735	921
Williston State College	751	400	534	720	342	468	851	381	524	779	354	494	803	385	522	812	365	515
<b>TOTAL</b>	<b>39,968</b>	<b>28,330</b>	<b>32,725</b>	<b>40,958</b>	<b>29,266</b>	<b>33,552</b>	<b>43,358</b>	<b>30,551</b>	<b>35,134</b>	<b>45,152</b>	<b>31,126</b>	<b>36,020</b>	<b>45,280</b>	<b>30,679</b>	<b>35,839</b>	<b>45,271</b>	<b>30,247</b>	<b>35,511</b>

**HC-Headcount**

All students enrolled regardless of number of credit hours

**FT-Full Time**

Students enrolled in 12 credit hours or more

**FTE - Full Time Equivalent**

Undergraduate student credit hours divided by 15 = one student FTE

Graduate student credit hours divided by 12 = one student FTE

Full-time professional students in law and medicine counted as one per enrollment. Part-time professional students in law and medicine counted as 1/2 per enrollment.

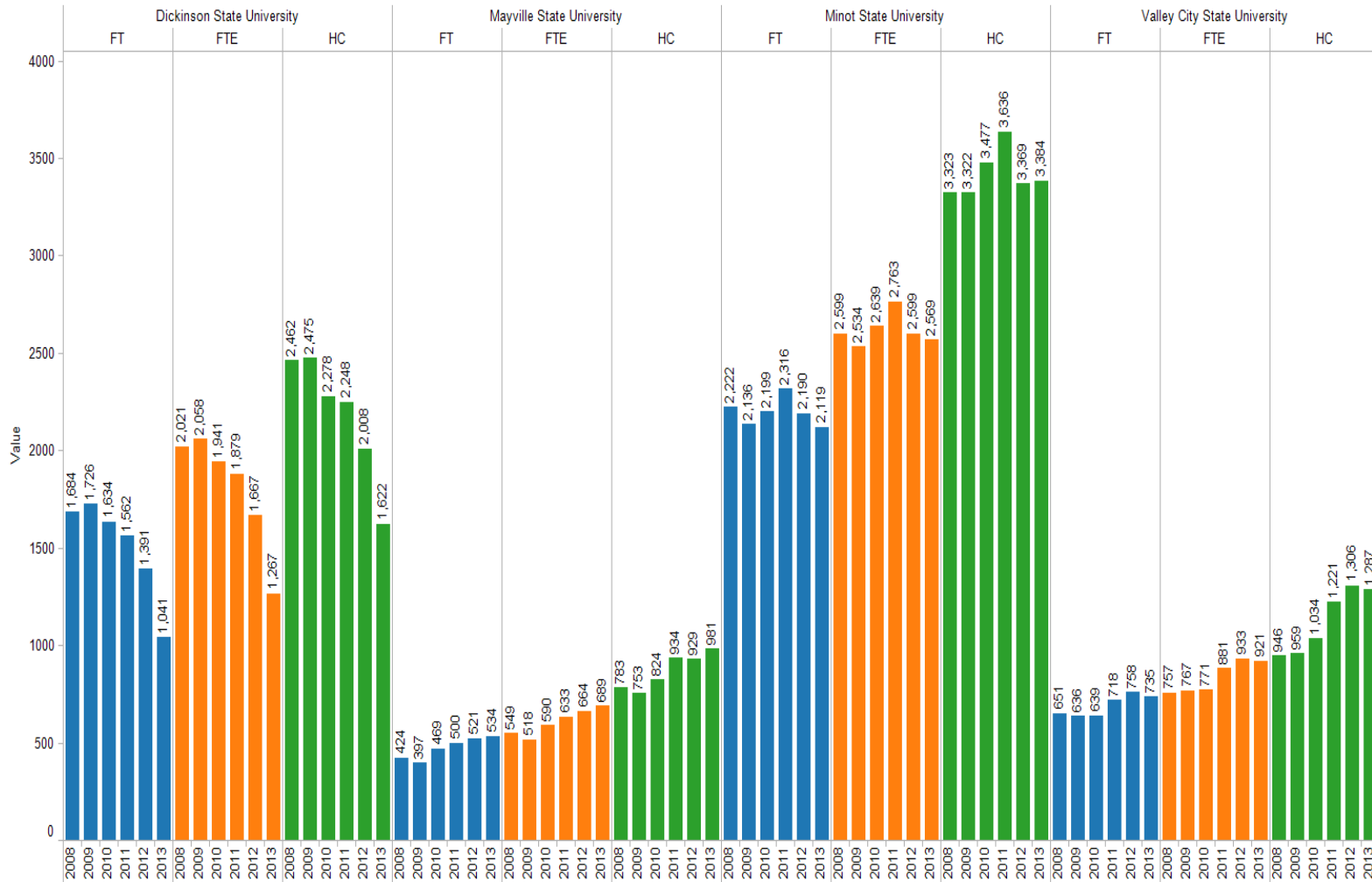
<sup>1</sup> In August 2006, in order to be more consistent with common practice in enrollment reporting, the SBHE changed the definition of undergraduate FTE to 15 credit hours from 16, and first professional to 1 FTE for each full-time student and 1/2 FTE for each part-time student. In order to provide a consistent basis for comparing 2006 enrollments to prior years, prior year FTE's have been recalculated based on the new definition. The new definition is compatible with national Integrated Post-Secondary Education Data System (IPEDS) reporting requirements.

4 Year

Institution / Year

Measure Names

- FT
- FTE
- HC

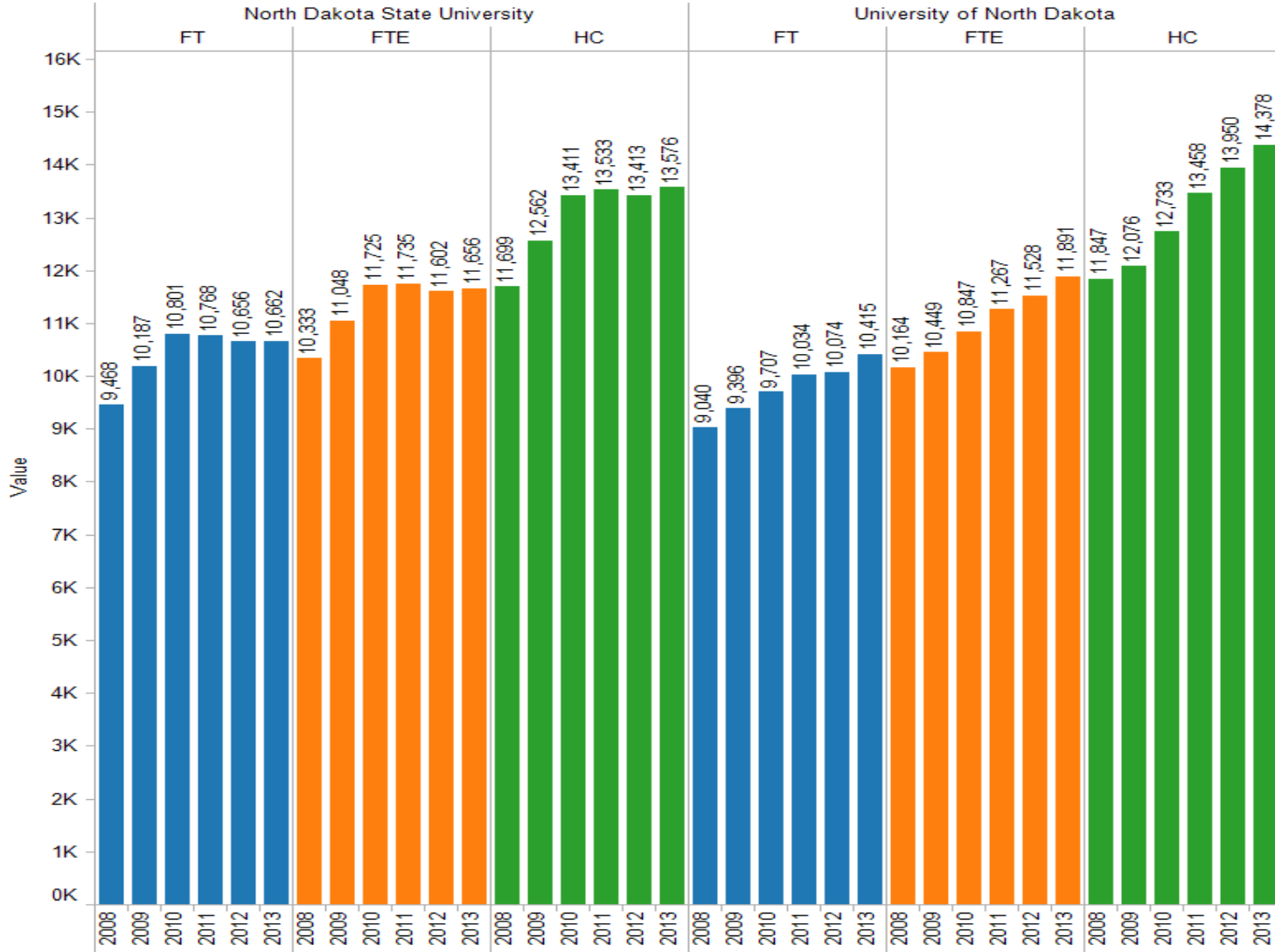


# Research

Institution / Year

## Measure Names

- FT
- FTE
- HC

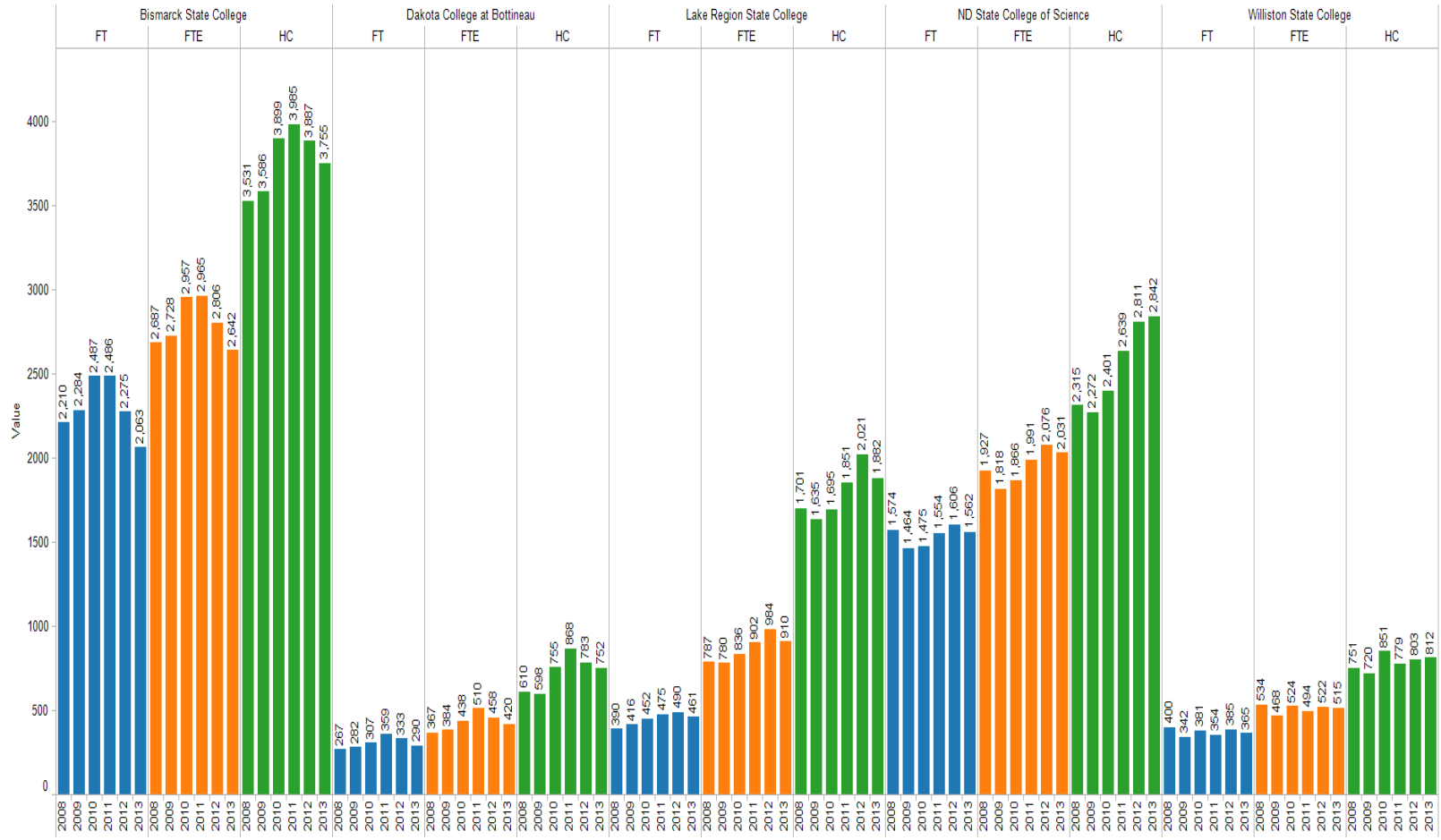


2 Year

Institution / Year

Measure Names

- FT
- FTE
- HC



**Table 10**  
**ALL HEADCOUNT ENROLLMENTS BY TUITION RESIDENCY STATUS**  
**Spring 2012**

	BSC	DCB	DSU	LRSC	MASU	MISU	NDSCS	NDSU	UND	VCSU	WSC	TOTALS
<b>RESIDENT</b>												
NORTH DAKOTA	2,828	577	1,095	1,389	565	1,931	1,997	5,492	5,697	757	560	22,888
<b>NON-RESIDENT</b>												
NON RESIDENT	436	98	131	109	16	440	125	1,402	1975	130	79	4,941
WESTERN EXCHANGE	215	28	170	23	211	179	18	105	625	148	59	1,781
MIDWEST HIGHER ED COMPACT	145	9	12	187	76	119	138	651	665	54	26	2,082
CONTIGUOUS	102	25	197	31	15	341	112	253	418	50	78	1,622
MINNESOTA RECIPROCITY	20	7	17	21	92	11	420	5,283	4259	137	6	10,273
NORTH DAKOTA MILITARY	8	8	0	122	6	363	32	233	702	11	4	1,489
ALUMNI DEPENDENTS	1	0	0	0	0	0	0	19	8	0	0	28
MINNESOTA PROF( GRAD ONLY)	0	0	0	0	0	0	0	138	29	0	0	167
NON-RESIDENT SUBTOTAL	927	175	527	493	416	1,453	845	8,084	8,681	530	252	22,383
<b>GRAND TOTALS</b>	<b>3,755</b>	<b>752</b>	<b>1,622</b>	<b>1,882</b>	<b>981</b>	<b>3,384</b>	<b>2,842</b>	<b>13,576</b>	<b>14,378</b>	<b>1,287</b>	<b>812</b>	<b>45,271</b>