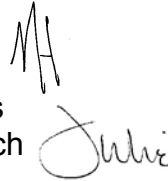


TO: Members, State Board of Higher Education

FROM: Mike Hillman, Vice Chancellor for Academic and Student Affairs
Julie Schepp, Academic Affairs Associate & Director of Research



DATE: February 25, 2010

Memo #: M-10-05

SUBJECT: REVISED Spring 2010 Enrollment Summary

The Spring 2010 enrollment report is attached. The report, which is being released today, summarizes this semester's enrollments as well as comparisons to previous years.

You will note the first page presents Spring 2010 enrollment highlights. The table on page two provides information on the total headcount along with the student full-time equivalent (FTE) counts. A table on page three describes headcount by tuition residency status. The bar graph on the last page depicts spring enrollments over the past 10 years.

Please do not hesitate to call with any questions you may have regarding this report.

Attachments

xc: Cabinet

g:\rebecca\400\enroll\09-10\spring 2010\revised spring 2010 enrollment summary memo.docx

North Dakota University System Enrollment Highlights Spring 2010

One-Year Comparison: Spring 2009 to Spring 2010

Student headcount enrollments increased by 2,400 students (5.8%) from 40,958 last spring to 43,358 this spring.

Student FTE enrollments increased by 1,582 FTEs (4.7%) from 33,552 last spring to 35,134 this spring.*

Five-Year Trend: Spring 2005 to Spring 2010

Over the last five years, the number of students in the system has increased 8.9%. The NDUS has 3,571 more students in Spring 2010 than in Spring 2005.

FTEs have increased within the same time frame. In 2005, the system served 33,933 FTEs. This spring, the system serves 35,134 FTEs, an increase of 3.5%.*

An increase in the number of students indicates a higher college participation rate. A more modest increase in FTEs indicates a trend toward part time enrollment.

Ten-Year Historical Chart: Spring 2001 to Spring 2010

This spring headcount (43,358) is significantly higher than the 10-year average of 38,961.

The 10-year average for spring FTEs is 32,788. This spring's enrollments are 2,346 FTEs above this average.*

* In August 2006, in order to be more consistent with common practice in enrollment reporting, the SBHE changed the definition of undergraduate FTE to 15 credit hours from 16, and first professional to 1 FTE for each full-time student and 1/2 FTE for each part-time student. In order to provide a consistent basis for comparing 2006 enrollments to prior years, prior year FTE's have been recalculated based on the new definition. The new definition is compatible with national Integrated Post-Secondary Education Data System (IPEDS) reporting requirements.

NORTH DAKOTA UNIVERSITY SYSTEM
DEGREE CREDIT SPRING ENROLLMENT REPORT
Five Year Summary: 2005-2010

INSTITUTION	2005			2006			2007			2008			2009			2010		
	HC	FT	FTE	HC	FT	FTE	HC	FT	FTE ¹	HC	FT	FTE	HC	FT	FTE	HC	FT	FTE
Bismarck State College	3,403	2,197	2,665	3,286	2,009	2,464	3,435	2,029	2,548	3,531	2,210	2,687	3,586	2,284	2,728	3,899	2,487	2,957
Dakota College at Bottineau	529	301	379	511	276	347	619	291	384	610	267	367	598	282	384	755	307	438
Dickinson State University	2,252	1,610	1,866	2,312	1,641	1,932	2,263	1,583	1,889	2,462	1,684	2,021	2,475	1,726	2,058	2,278	1,634	1,941
Lake Region State College	1,408	429	739	1,466	373	706	1,510	367	717	1,701	390	787	1,635	416	780	1,695	452	836
Mayville State University	815	597	689	867	571	677	779	479	596	783	424	549	753	397	518	824	469	590
Minot State University	3,500	2,296	2,764	3,512	2,321	2,790	3,386	2,185	2,616	3,323	2,222	2,599	3,322	2,136	2,534	3,477	2,199	2,639
ND State College of Science	2,317	1,761	2,087	2,255	1,658	1,964	2,266	1,617	1,924	2,315	1,574	1,927	2,272	1,464	1,818	2,401	1,475	1,866
North Dakota State University	11,292	8,745	9,892	11,325	9,044	9,979	11,555	9,328	10,243	11,699	9,468	10,333	12,562	10,187	11,048	13,411	10,801	11,725
University of North Dakota	12,376	9,672	11,034	12,321	9,480	10,850	12,034	9,484	10,516	11,847	9,040	10,164	12,076	9,396	10,449	12,733	9,707	10,847
Valley City State University	930	750	858	960	700	816	927	650	750	946	651	757	959	636	767	1,034	639	771
Williston State College	965	575	961	900	501	656	855	446	601	751	400	534	720	342	468	851	381	524
TOTAL	39,787	28,933	33,933	39,715	28,574	33,181	39,629	28,459	32,784	39,968	28,330	32,725	40,958	29,266	33,552	43,358	30,551	35,134

HC-Headcount

All students enrolled regardless of number of credit hours

FT-Full Time

Students enrolled in 12 credit hours or more

FTE - Full Time Equivalent

Undergraduate student credit hours divided by 15 = one student FTE

Graduate student credit hours divided by 12 = one student FTE

Full-time professional students in law and medicine counted as one per enrollment. Part-time professional students in law and medicine counted as 1/2 per enrollment.

¹ In August 2006, in order to be more consistent with common practice in enrollment reporting, the SBHE changed the definition of undergraduate FTE to 15 credit hours from 16, and first professional to 1 FTE for each full-time student and 1/2 FTE for each part-time student. In order to provide a consistent basis for comparing 2006 enrollments to prior years, prior year FTE's have been recalculated based on the new definition. The new definition is compatible with national Integrated Post-Secondary Education Data System (IPEDS) reporting requirements.

HEADCOUNT ENROLLMENTS BY TUITION RESIDENCY STATUS¹

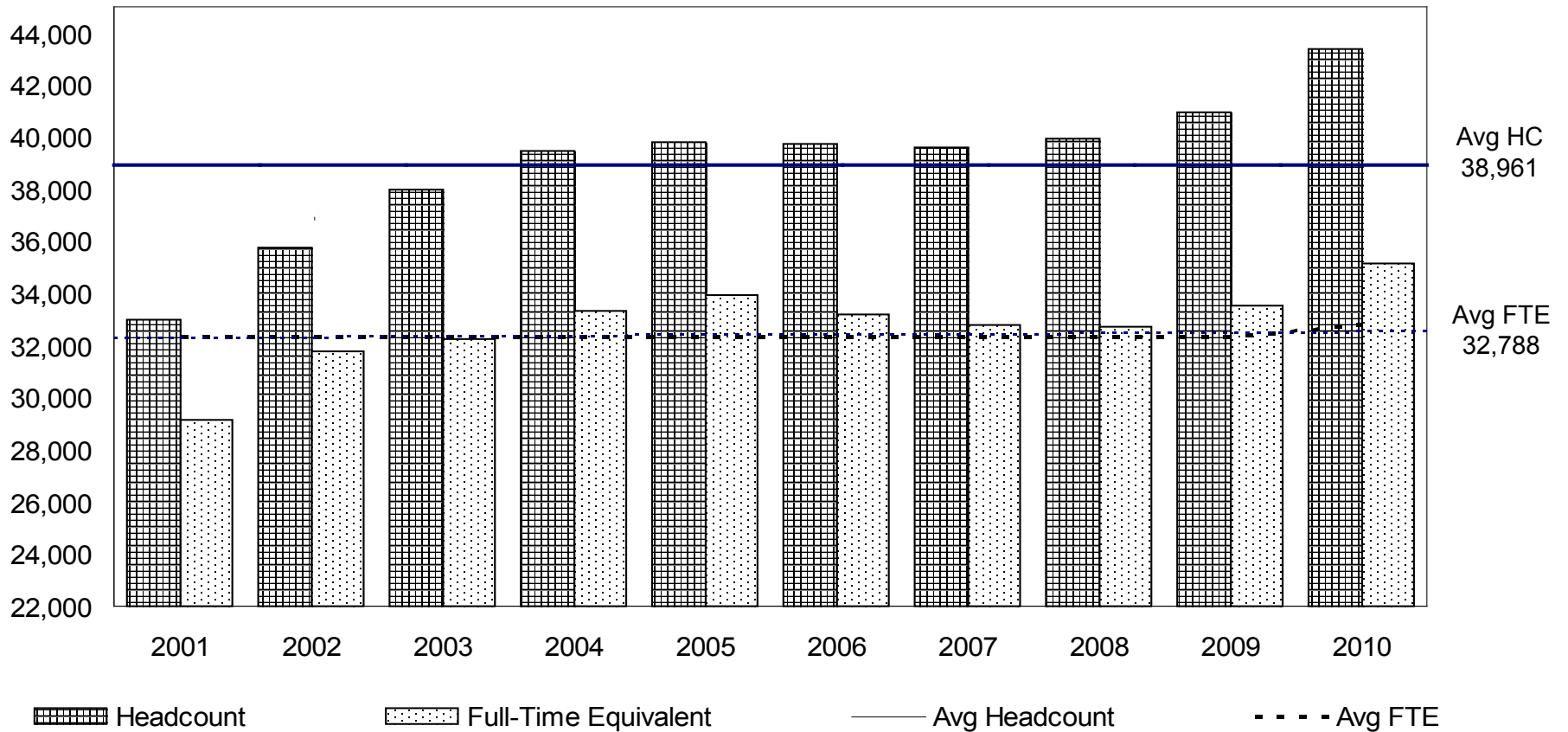
Spring 2010

	BSC	DCB	DSU	LRSC	MASU	MISU	NDSCS	NDSU	UND	VCSU	WSC	TOTALS
RESIDENT												
NORTH DAKOTA	3,126	656	1,363	1,403	534	2,761	1,677	6,098	5,839	660	637	24,754
NON-RESIDENT												
MANITOBA	0	16	6	0	9	62	1	9	84	13	2	202
MINNESOTA	104	8	16	132	101	46	499	5,161	4108	113	15	10,303
OTHER MHEC STATES	150	13	31	31	21	50	23	286	556	38	17	1,216
MONTANA	47	10	215	8	8	80	47	68	127	11	99	720
SASKATCHEWAN	1	1	16	2	1	165	1	3	9	2	13	214
SOUTH DAKOTA	36	2	72	5	3	16	79	242	194	14	10	673
OTHER WICHE STATES	145	17	184	31	83	103	13	114	701	100	27	1,518
OTHER	290	32	375	83	64	194	61	1,430	1,115	83	31	3,758
NON- RESIDENT SUBTOTAL	773	99	915	292	290	716	724	7,313	6,894	374	214	18,604
GRAND TOTALS	3,899	755	2,278	1,695	824	3,477	2,401	13,411	12,733	1,034	851	43,358

Note: Information includes students in extended degree programs and students jointly enrolled through collaborative program arrangements.

¹Official institutionally determined residence for tuition purposes.

NORTH DAKOTA UNIVERSITY SYSTEM HEADCOUNT AND FTE ENROLLMENT Spring Terms 2001-2010



In August 2006, in order to be more consistent with common practice in enrollment reporting, the SBHE changed the definition of undergraduate FTE to 15 credit hours from 16, and first professional to 1 FTE for each full-time student and 1/2 FTE for each part-time student. In order to provide a consistent basis for comparing 2006 enrollments to prior years, prior year FTE's have been recalculated based on the new definition. The new definition is compatible with national Integrated Post-Secondary Education Data System (IPEDS) reporting requirements.