

ID	Task Mode	Task Name	Start	Finish	2016								
					Jul	Sep	Nov	Jan	Mar	May	Jul	Sep	Nov
55		FIN - T&E Implementation (Phase I)	Wed 7/1/15	Fri 9/15/17									
3		HR - HCM Upgrade to 9.2	Thu 9/1/16	Sat 6/30/18									
98		CS - Passport	Thu 9/1/16	Thu 2/22/18									
38		HR - Novelution	Tue 11/1/16	Fri 12/29/17									
100		CS - Terra Dotta	Sun 1/1/17	Tue 5/30/17									
101		CS - Via TRM	Sun 1/1/17	Thu 6/29/17									
4		HR - Automate CACO security	Mon 1/2/17	Tue 10/31/17									
11		HR - IPEDS changes	Mon 1/2/17	Fri 3/31/17									
12		HR - Legislative Requests	Mon 1/2/17	Fri 4/28/17									
30		HR - Post-PEPP Cleanup	Mon 1/2/17	Tue 12/31/19									
39		HR - Complete roll out of TLAB	Mon 1/2/17	Wed 5/31/17									
46		FIN - Automate CACO security	Mon 1/2/17	Sun 12/31/17									
49		FIN - Novelution	Mon 1/2/17	Sun 10/1/17									
51		FIN - Chartfield Request	Mon 1/2/17	Fri 6/30/17									
54		FIN - Online Supplier Portal (internal)	Mon 1/2/17	Fri 3/30/18									
74		CS - Annual Enrollment - Census, Data Collection, Reporting	Mon 1/2/17	Fri 3/31/17									
76		CS - FAFSA Project	Mon 1/2/17	Tue 10/31/17									
88		CS - Campus Solutions 9.2	Mon 1/2/17	Mon 12/31/18									
89		CS - People Tools 8.5x	Mon 1/2/17	Mon 12/31/18									
90		CS - Fluid review and implement	Mon 1/2/17	Mon 12/31/18									
81		CS - SPOL - courses, classes, and sections	Wed 2/1/17	Fri 6/30/17									
82		CS - Black Board SAIP	Wed 2/1/17	Fri 12/29/17									
86		CS - Starfish	Wed 2/1/17	Fri 12/29/17									
87		CS - PAR	Wed 2/1/17	Fri 12/29/17									
92		CS - Bundle 44	Wed 2/1/17	Mon 2/20/17									

<p>Red - Maintenance (required for support)</p> <p>Orange - fixes and other required items</p> <p>Yellow - Initiatives (implement new item)</p> <p>Green - Enhancements (enhance item we have)</p>	Task		Inactive Task		Manual Summary Rollup		External Milestone	
	Split		Inactive Milestone		Manual Summary		Deadline	
	Milestone		Inactive Summary		Start-only		Progress	
	Summary		Manual Task		Finish-only		Manual Progress	
	Project Summary		Duration-only		External Tasks			

ID	Task Mode	Task Name	Start	Finish	2016									
					Jul	Sep	Nov	Jan	Mar	May	Jul	Sep	Nov	
97		CS - Grey Heller	Wed 2/1/17	Fri 6/23/17										
77		Fin - Grey Heller ERP Firewall	Thu 2/2/17	Fri 4/7/17										
78		HR - Grey Heller ERP Firewall	Thu 2/2/17	Fri 4/7/17										
96		CS - Oracle 12C	Wed 3/1/17	Wed 5/31/17										
91		CS - Refresh of Campus Solutions environments	Tue 4/18/17	Thu 4/20/17										
93		CS - Bundle 45	Fri 4/28/17	Wed 5/17/17										
8		HR - Consolidation of positions for NDSU Ag (DI Obj 3.2)	Mon 5/1/17	Fri 1/26/18										
9		HR - Update Absence Management due to new Faculty sick leave policy	Mon 5/1/17	Mon 8/28/17										
53		FIN - eForms (Pcards) and workflow	Tue 5/1/18	Fri 9/28/18										
40		HR- HighPoint Mobile for HR Update	Thu 6/1/17	Fri 6/30/17										
6		HR - MoveIT	Sat 7/1/17	Sat 9/30/17										
48		FIN - MoveIT	Sat 7/1/17	Sat 9/30/17										
84		Fin - Query Pages rollout	Sat 7/1/17	Fri 12/29/17										
13		HR - eForms for Additional Pay requests	Mon 1/1/18	Sun 7/1/18										
45		FIN - Fluid review and implement	Mon 11/6/17	Fri 11/29/19										
52		FIN - AWE	Mon 11/6/17	Fri 11/2/18										
94		CS - Bundle 46	Fri 7/14/17	Wed 8/2/17										
56		FIN - 2017 Patching	Mon 7/17/17	Wed 11/15/17										
75		CS - Fall Enrollment - Census, Data Collection, Reporting	Tue 8/1/17	Fri 10/27/17										
2		HR - Fluid review and implement	Fri 9/1/17	Sat 6/30/18										
7		HR - Patching - HR 2017 Fall	Mon 10/2/17	Fri 12/29/17										
95		CS - Bundle 47	Fri 10/20/17	Wed 11/8/17										
99		CS - 1098 T	Wed 11/1/17	Fri 12/29/17										
44		FIN - Integration with Perceptive Content	Mon 11/20/17	Fri 6/29/18										
43		FIN - T&E Implementation (Phase II)	Mon 12/4/17	Mon 12/31/18										

Red - Maintenance (required for support) Orange - fixes and other required items Yellow - Initiatives (implement new item) Green - Enhancements (enhance item we have)	Task		Inactive Task		Manual Summary Rollup		External Milestone	
	Split		Inactive Milestone		Manual Summary		Deadline	
	Milestone		Inactive Summary		Start-only		Progress	
	Summary		Manual Task		Finish-only		Manual Progress	
	Project Summary		Duration-only		External Tasks			

ID	Task Mode	Task Name	Start	Finish	2016									
					Jul	Sep	Nov	Jan	Mar	May	Jul	Sep	Nov	
1		CND - Bio-Demo Sync (Phase 2)	Mon 1/1/18	Fri 6/29/18										
42		HR - Legislative Requests	Mon 1/1/18	Wed 2/28/18										
58		FIN - Pivot Grids	Mon 1/1/18	Tue 7/31/18										
65		FIN - Supplemental Info (grants)	Mon 1/1/18	Mon 12/31/18										
66		FIN - Supplier Audit	Mon 1/1/18	Fri 6/1/18										
80		CS - Delegated Access (review functionality)	Mon 1/1/18	Fri 12/28/18										
59		FIN - Related Content	Tue 1/2/18	Mon 12/31/18										
102		CS - NSC integrations for transcripts	Tue 1/2/18	Mon 9/3/18										
21		HR - HighPoint Mobile for HR update	Fri 6/1/18	Sat 6/30/18										
10		HR - Manager Self Service Enhancements (DI Obj 7.1)	Sun 7/1/18	Wed 10/31/18										
14		HR - Travel and Expense integrations	Sun 7/1/18	Sun 9/30/18										
22		HR - Manager Self Service Enhancements (DI Obj 7.1)	Sun 7/1/18	Fri 3/1/19										
23		FIN - Requisitions	Sun 7/1/18	Mon 6/29/20										
50		FIN - Travel and Expense integrations	Sun 7/1/18	Sun 9/30/18										
57		FIN - Records Retention	Sun 7/1/18	Mon 1/28/19										
63		FIN - eProcurement	Sun 7/1/18	Mon 6/29/20										
64		FIN - Single Use Accounts	Sun 7/1/18	Fri 7/3/20										
5		HR - IBARS - fix issues from last biennium	Tue 7/3/18	Fri 8/31/18										
47		FIN - IBARS - fix issues from last biennium	Wed 8/1/18	Fri 8/31/18										
60		FIN - Patching - Fin 2018	Wed 8/1/18	Fri 11/30/18										
19		HR - FMLA tracking (DI Obj 7.1)	Sat 9/1/18	Fri 11/30/18										
15		HR - Records Retention	Mon 10/1/18	Sun 3/31/19										
16		HR - Patching - HR 2018 Fall	Mon 10/1/18	Mon 12/31/18										
17		HR - Performance Reviews/ePerformance/Upload from Excel to PS (DI Obj9.4)	Mon 10/1/18	Mon 12/31/18										
20		HR - Attachments/Notes/Comments (DI Obj 7.1)	Mon 10/1/18	Thu 2/28/19										

<p>Red - Maintenance (required for support)</p> <p>Orange - fixes and other required items</p> <p>Yellow - Initiatives (implement new item)</p> <p>Green - Enhancements (enhance item we have)</p>	Task		Inactive Task		Manual Summary Rollup		External Milestone	
	Split		Inactive Milestone		Manual Summary		Deadline	
	Milestone		Inactive Summary		Start-only		Progress	
	Summary		Manual Task		Finish-only		Manual Progress	
	Project Summary		Duration-only		External Tasks			

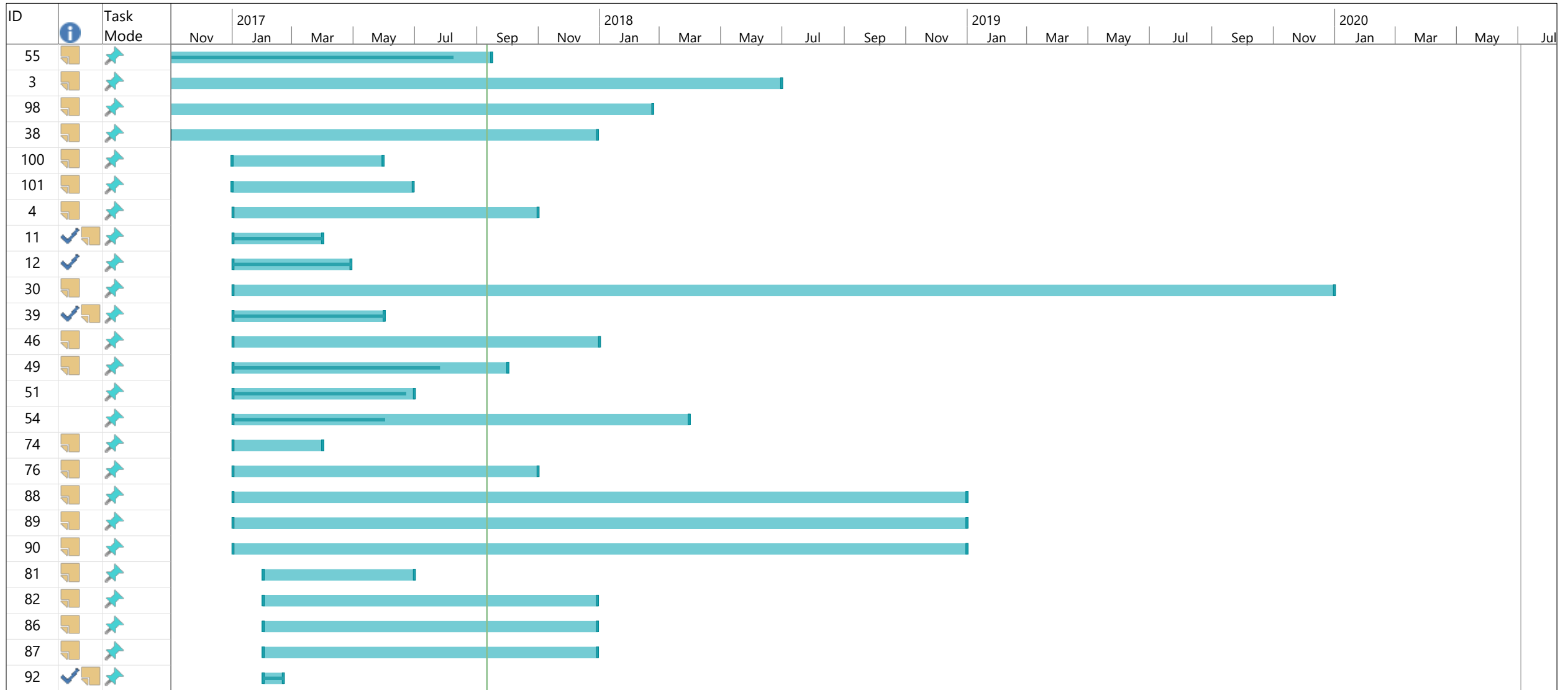
ID	Task Mode	Task Name	Start	Finish	2016									
					Jul	Sep	Nov	Jan	Mar	May	Jul	Sep	Nov	
24		HR - Patching - HR 2019 Spring	Tue 1/1/19	Fri 3/29/19										
41		HR - HighPoint Mobile for HR update	Wed 1/2/19	Thu 1/31/19										
72		FIN - 2019 Patching	Thu 8/1/19	Fri 11/29/19										
25		HR - Patching - HR 2019 Fall	Tue 10/1/19	Tue 12/31/19										
18		HR - Candidate Gateway/Recruiting Solutions (DI Obj 7.1)												
26		HR - Exit Survey (DI Obj 7.1)												
27		HR - Market Data functionality (DI Obj 7.1)												
28		HR - DNA Replacement												
29		HR - PeopleSoft Test Framework (PTF)												
31		HR - Query Training Documents												
32		HR - Query Training												
33		HR - Review Development Security												
34		HR - Activity Guides												
35		HR - Pivot Grids												
36		HR - Related Content												
37		HR - Budget Module additional changes												
61		FIN - Supplier Contracts												
62		FIN - Strategic Sourcing												
67		FIN - Post-PEPP Cleanup												
68		FIN - Query Training Documents												
69		FIN - Query Training												
70		FIN - Review Development Security												
71		FIN - PeopleSoft Test Framework (PTF)												
73		CS - DNA Replacement												
79		CS - High Point Mobile												

<p>Red - Maintenance (required for support)</p> <p>Orange - fixes and other required items</p> <p>Yellow - Initiatives (implement new item)</p> <p>Green - Enhancements (enhance item we have)</p>	Task		Inactive Task		Manual Summary Rollup		External Milestone	
	Split		Inactive Milestone		Manual Summary		Deadline	
	Milestone		Inactive Summary		Start-only		Progress	
	Summary		Manual Task		Finish-only		Manual Progress	
	Project Summary		Duration-only		External Tasks			

ID	Task Mode	Task Name	Start	Finish	2016									
					Jul	Sep	Nov	Jan	Mar	May	Jul	Sep	Nov	
83		CS - FA Records Archiving												
85		CS - SF Records Archiving												

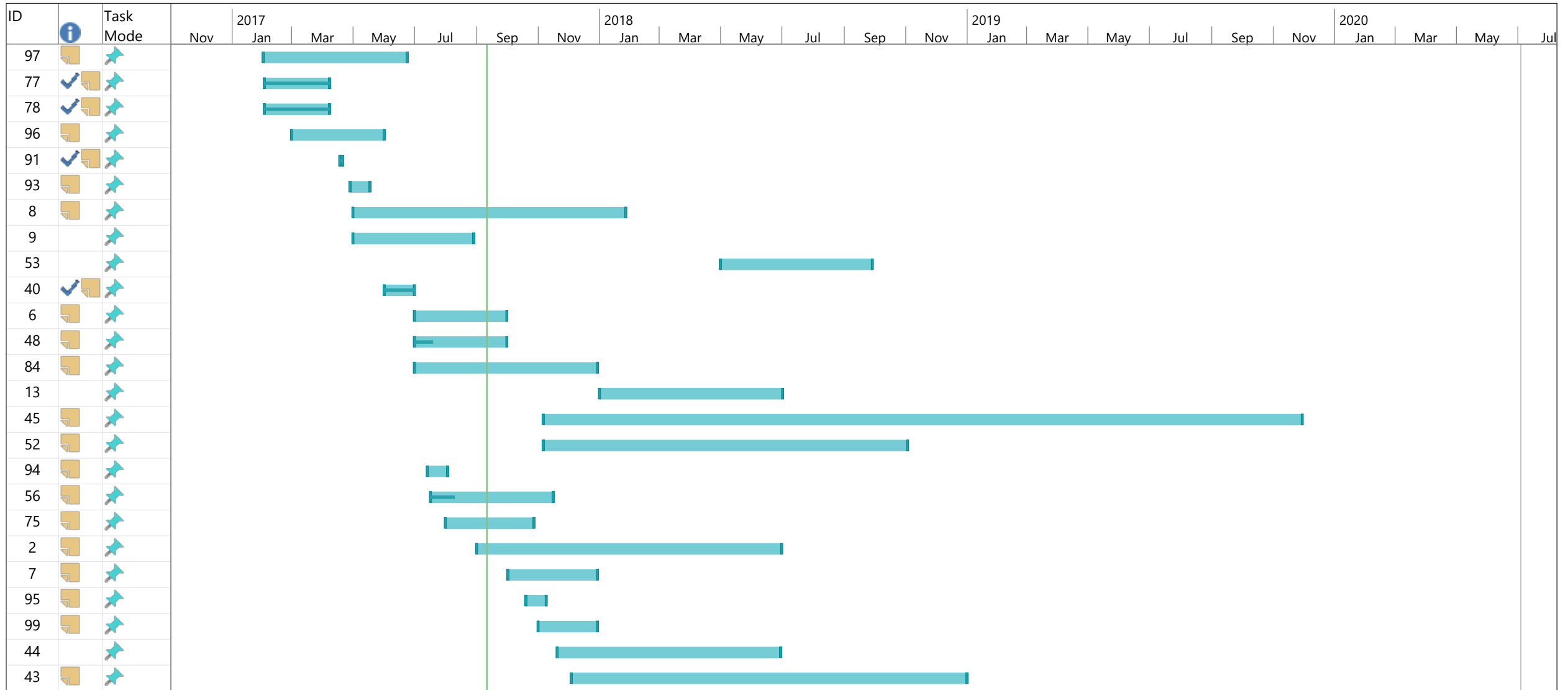


Red - Maintenance (required for support) Orange - fixes and other required items Yellow - Initiatives (implement new item) Green - Enhancements (enhance item we have)	Task		Inactive Task		Manual Summary Rollup		External Milestone	
	Split		Inactive Milestone		Manual Summary		Deadline	
	Milestone		Inactive Summary		Start-only		Progress	
	Summary		Manual Task		Finish-only		Manual Progress	
	Project Summary		Duration-only		External Tasks			

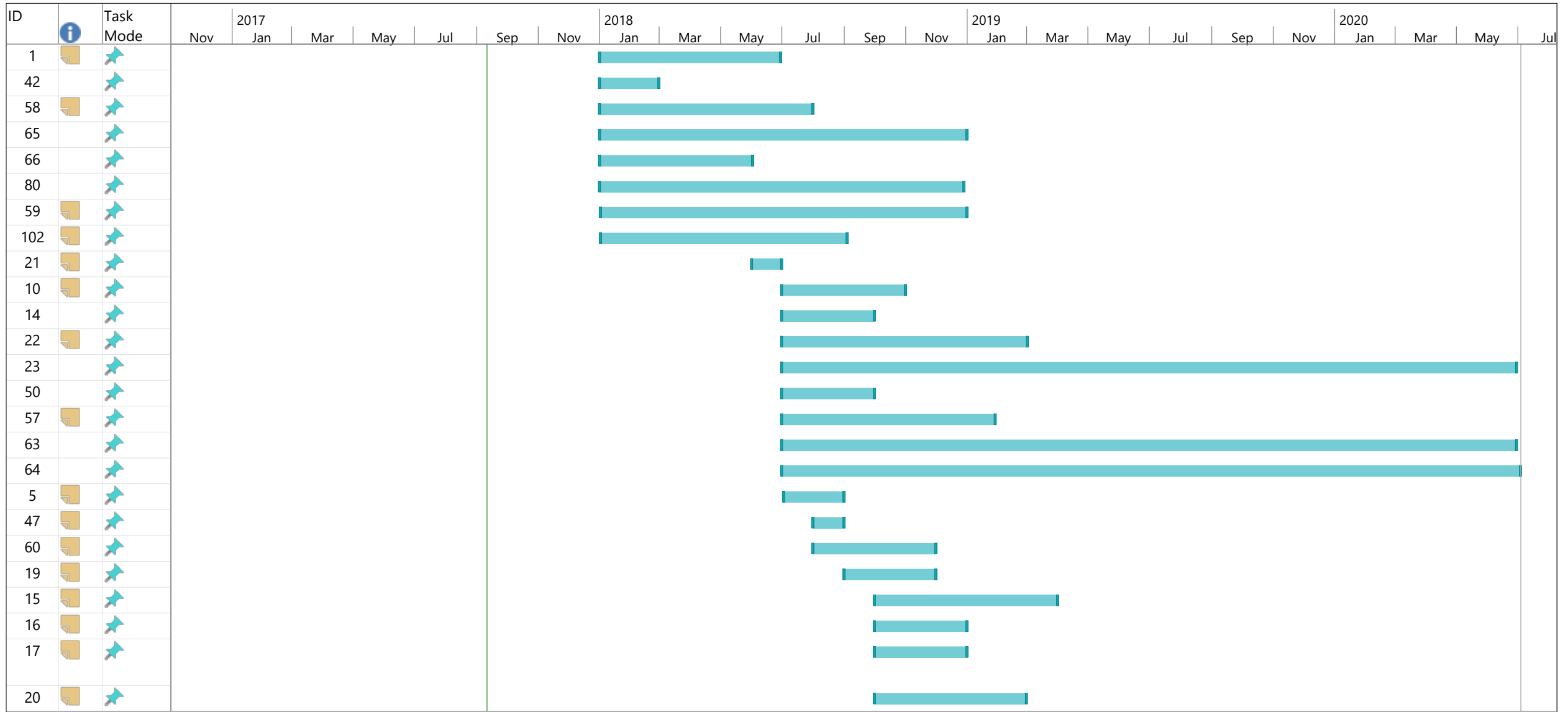


Red - Maintenance (required for support)  
 Orange - fixes and other required items  
 Yellow - Initiatives (implement new item)  
 Green - Enhancements (enhance item we have)

Task		Inactive Task		Manual Summary Rollup		External Milestone	
Split		Inactive Milestone		Manual Summary		Deadline	
Milestone		Inactive Summary		Start-only		Progress	
Summary		Manual Task		Finish-only		Manual Progress	
Project Summary		Duration-only		External Tasks			



<p>Red - Maintenance (required for support)</p> <p>Orange - fixes and other required items</p> <p>Yellow - Initiatives (implement new item)</p> <p>Green - Enhancements (enhance item we have)</p>	Task		Inactive Task		Manual Summary Rollup		External Milestone	
	Split		Inactive Milestone		Manual Summary		Deadline	
	Milestone		Inactive Summary		Start-only		Progress	
	Summary		Manual Task		Finish-only		Manual Progress	
	Project Summary		Duration-only		External Tasks			



Red - Maintenance (required for support) Orange - fixes and other required items Yellow - Initiatives (implement new item) Green - Enhancements (enhance item we have)	Task		Inactive Task		Manual Summary Rollup		External Milestone	
	Split		Inactive Milestone		Manual Summary		Deadline	
	Milestone		Inactive Summary		Start-only		Progress	
	Summary		Manual Task		Finish-only		Manual Progress	
	Project Summary		Duration-only		External Tasks			





<p>Red - Maintenance (required for support)</p> <p>Orange - fixes and other required items</p> <p>Yellow - Initiatives (implement new item)</p> <p>Green - Enhancements (enhance item we have)</p>	Task		Inactive Task		Manual Summary Rollup		External Milestone	
	Split		Inactive Milestone		Manual Summary		Deadline	
	Milestone		Inactive Summary		Start-only		Progress	
	Summary		Manual Task		Finish-only		Manual Progress	
	Project Summary		Duration-only		External Tasks			

ID	Task Mode	2017					2018					2019					2020							
		Nov	Jan	Mar	May	Jul	Sep	Nov	Jan	Mar	May	Jul	Sep	Nov	Jan	Mar	May	Jul	Sep	Nov	Jan	Mar	May	Jul
83																								
85																								



Red - Maintenance (required for support)  
 Orange - fixes and other required items  
 Yellow - Initiatives (implement new item)  
 Green - Enhancements (enhance item we have)

Task		Inactive Task		Manual Summary Rollup		External Milestone	
Split		Inactive Milestone		Manual Summary		Deadline	
Milestone		Inactive Summary		Start-only		Progress	
Summary		Manual Task		Finish-only		Manual Progress	
Project Summary		Duration-only		External Tasks			

ID	Task Mode	2021			2022			2023			2024								
		Jul	Sep	Nov	Jan	Mar	May	Jul	Sep	Nov	Jan	Mar	May	Jul	Sep	Nov	Jan	Ma	
55																			
3																			
98																			
38																			
100																			
101																			
4																			
11																			
12																			
30																			
39																			
46																			
49																			
51																			
54																			
74																			
76																			
88																			
89																			
90																			
81																			
82																			
86																			
87																			
92																			

<p>Red - Maintenance (required for support)</p> <p>Orange - fixes and other required items</p> <p>Yellow - Initiatives (implement new item)</p> <p>Green - Enhancements (enhance item we have)</p>	Task		Inactive Task		Manual Summary Rollup		External Milestone	
	Split		Inactive Milestone		Manual Summary		Deadline	
	Milestone		Inactive Summary		Start-only		Progress	
	Summary		Manual Task		Finish-only		Manual Progress	
	Project Summary		Duration-only		External Tasks			

ID	Task Mode	2021			2022			2023			2024								
		Jul	Sep	Nov	Jan	Mar	May	Jul	Sep	Nov	Jan	Mar	May	Jul	Sep	Nov	Jan	Mar	
97																			
77																			
78																			
96																			
91																			
93																			
8																			
9																			
53																			
40																			
6																			
48																			
84																			
13																			
45																			
52																			
94																			
56																			
75																			
2																			
7																			
95																			
99																			
44																			
43																			

<p>Red - Maintenance (required for support)</p> <p>Orange - fixes and other required items</p> <p>Yellow - Initiatives (implement new item)</p> <p>Green - Enhancements (enhance item we have)</p>	Task		Inactive Task		Manual Summary Rollup		External Milestone	
	Split		Inactive Milestone		Manual Summary		Deadline	
	Milestone		Inactive Summary		Start-only		Progress	
	Summary		Manual Task		Finish-only		Manual Progress	
	Project Summary		Duration-only		External Tasks			

ID	Task Mode	2021			2022			2023			2024								
		Jul	Sep	Nov	Jan	Mar	May	Jul	Sep	Nov	Jan	Mar	May	Jul	Sep	Nov	Jan	Ma	
1																			
42																			
58																			
65																			
66																			
80																			
59																			
102																			
21																			
10																			
14																			
22																			
23																			
50																			
57																			
63																			
64																			
5																			
47																			
60																			
19																			
15																			
16																			
17																			
20																			

<p>Red - Maintenance (required for support)</p> <p>Orange - fixes and other required items</p> <p>Yellow - Initiatives (implement new item)</p> <p>Green - Enhancements (enhance item we have)</p>	Task		Inactive Task		Manual Summary Rollup		External Milestone	
	Split		Inactive Milestone		Manual Summary		Deadline	
	Milestone		Inactive Summary		Start-only		Progress	
	Summary		Manual Task		Finish-only		Manual Progress	
	Project Summary		Duration-only		External Tasks			

ID	Task Mode	2021			2022			2023			2024							
		Jul	Sep	Nov	Jan	Mar	May	Jul	Sep	Nov	Jan	Mar	May	Jul	Sep	Nov	Jan	Ma
24																		
41																		
72																		
25																		
18																		
26																		
27																		
28																		
29																		
31																		
32																		
33																		
34																		
35																		
36																		
37																		
61																		
62																		
67																		
68																		
69																		
70																		
71																		
73																		
79																		

<p>Red - Maintenance (required for support)</p> <p>Orange - fixes and other required items</p> <p>Yellow - Initiatives (implement new item)</p> <p>Green - Enhancements (enhance item we have)</p>	Task		Inactive Task		Manual Summary Rollup		External Milestone	
	Split		Inactive Milestone		Manual Summary		Deadline	
	Milestone		Inactive Summary		Start-only		Progress	
	Summary		Manual Task		Finish-only		Manual Progress	
	Project Summary		Duration-only		External Tasks			

ID	Task Mode	2021			2022			2023			2024								
		Jul	Sep	Nov	Jan	Mar	May	Jul	Sep	Nov	Jan	Mar	May	Jul	Sep	Nov	Jan	Mar	
83																			
85																			



<p>Red - Maintenance (required for support)</p> <p>Orange - fixes and other required items</p> <p>Yellow - Initiatives (implement new item)</p> <p>Green - Enhancements (enhance item we have)</p>	Task		Inactive Task		Manual Summary Rollup		External Milestone	
	Split		Inactive Milestone		Manual Summary		Deadline	
	Milestone		Inactive Summary		Start-only		Progress	
	Summary		Manual Task		Finish-only		Manual Progress	
	Project Summary		Duration-only		External Tasks			

- 55 FIN - T&E Implementation (Phase I)**  
Travel and Expense
  
- 3 HR - HCM Upgrade to 9.2**  
Version 9.1 support ends Jan 2018
  
- 98 CS - Passport**  
Passport is a project to design, pilot, and implement a new and better way for college students to transfer general education coursework.
  
- 38 HR - Novelution**  
Grants pre-award software for UND and NDSU
  
- 100 CS - Terra Dotta**  
Vendor hosted service for automating international student I-20 information into the Student and Exchange Visitor Information System (SEVIS).
  
- 101 CS - Via TRM**  
UND International Center
  
- 4 HR - Automate CACO security**  
Request to automate granting security by Campus Access Control Officers (CACOs)
  
- 11 HR - IPEDS changes**  
Annual Higher Ed IPEDS report
  
  
- 30 HR - Post-PEPP Cleanup**  
When we split the HE and State databases in 2012, all of the state development work was left in our system. The goal is to clean it up.
  
  
- 39 HR - Complete roll out of TLAB**  
TLAB is the Time & Labor/Absence Management project
  
- 46 FIN - Automate CACO security**  
Request to automate granting security by Campus Access Control Officers (CACOs)
  
- 49 FIN - Novelution**  
Grants pre-award software for UND and NDSU
  
- 74 CS - Annual Enrollment - Census, Data Collection, Reporting**  
Required annual reporting
  
  
- 76 CS - FAFSA Project**  
Federal Financial Aid project SLA with Colorado State for a "national" financial aid application.
  
- 88 CS - Campus Solutions 9.2**  
CS 9.0 support ends December 2019



- 89 CS - People Tools 8.5x**  
PeopleTools 8.54 support ends December 2017
- 90 CS - Fluid review and implement**  
Fluid is a new technology front end for PeopleSoft which allows it to be responsive to the device that is being used. It's more robust than simply a mobile platform.
- 81 CS - SPOL - courses, classes, and sections**  
Strategic Planning OnLine
- 82 CS - Black Board SAIP**  
Initially, with MISU, will include all campuses eventually
- 86 CS - Starfish**  
Student retention
- 87 CS - PAR**  
Predictive Analytics (Hobsons)
- 92 CS - Bundle 44**  
Oracle delivered patching.
- 97 CS - Grey Heller**  
This project enables MFA (Multi-Factor Authentication) in CS.
- 77 Fin - Grey Heller ERP Firewall**  
This project enables MFA (Multi-Factor Authentication) in Financials.
- 78 HR - Grey Heller ERP Firewall**  
This project enables MFA (Multi-Factor Authentication) in HRMS
- .
- 96 CS - Oracle 12C**  
Database upgrade is needed to maintain support.
- 91 CS - Refresh of Campus Solutions environments**  
Refresh all of the CS environments. (The process is more arduous for CS than HR and Fin, so HR and Fin don't have it on their list.)
- 93 CS - Bundle 45**  
Oracle delivered patching.
- 8 HR - Consolidation of positions for NDSU Ag (DI Obj 3.2)**  
One of the Data Inconsistencies objectives.
- 40 HR- HighPoint Mobile for HR Update**  
Need to keep the mobile app up to date for security reasons (at a minimum).

**6 HR - MoveIT**

MoveIT is a replacement for the aging Sophie FTP server that is more secure and has full auditing capabilities.

**48 FIN - MoveIT**

MoveIT is a replacement for the aging Sophie FTP server that is more secure and has full auditing capabilities.

**84 Fin - Query Pages rollout**

This allows departmental users to execute queries in Financials.

**45 FIN - Fluid review and implement**

Fluid is a new technology front end for PeopleSoft which allows it to be responsive to the device that is being used. It's more robust than simply a mobile platform.

**52 FIN - AWE**

Approval Workflow Engine

**94 CS - Bundle 46**

Oracle delivered patching.

**56 FIN - 2017 Patching**

Oracle delivered patching.

**75 CS - Fall Enrollment - Census, Data Collection, Reporting**

Required fall reporting

**2 HR - Fluid review and implement**

Fluid is a new technology front end for PeopleSoft which allows it to be responsive to the device that is being used. It's more robust than simply a mobile platform.

**7 HR - Patching - HR 2017 Fall**

Oracle delivered patching.

**95 CS - Bundle 47**

Oracle delivered patching.

**99 CS - 1098 T**

Federal student tuition forms.

**43 FIN - T&E Implementation (Phase II)**

Travel and Expense

**1 CND - Bio-Demo Sync (Phase 2)**

The first phase of the Bio/Demo project integrates a lot of core data between CS, HR and Fin. This includes more data in the integration.

**58 FIN - Pivot Grids**

Pivot grids are an excel-like feature that was delivered in PeopleTools. We would like to investigate how they work and deploy them in places that it makes sense for end-users.

**59 FIN - Related Content**

Related content is a feature that was delivered in PeopleTools. We would like to investigate how it works and deploy it in places that it makes sense for end-users.

**102 CS - NSC integrations for transcripts**

Direct connection with National Student Clearing House (NSC) from Campus Solutions.

**21 HR - HighPoint Mobile for HR update**

Need to keep the mobile app up to date for security reasons (at a minimum).

**10 HR - Manager Self Service Enhancements (DI Obj 7.1)**

One of the Data Inconsistencies objectives.

**22 HR - Manager Self Service Enhancements (DI Obj 7.1)**

One of the Data Inconsistencies objectives.

**57 FIN - Records Retention**

Implement the NDUS retention schedule in Financials.

**5 HR - IBARS - fix issues from last biennium**

The biennial extract for IBARS needs some changes for next year.

**47 FIN - IBARS - fix issues from last biennium**

The biennial extract for IBARS needs some changes for next year.

**60 FIN - Patching - Fin 2018**

Oracle delivered patching.

**19 HR - FMLA tracking (DI Obj 7.1)**

One of the Data Inconsistencies objectives.

**15 HR - Records Retention**

Implement the NDUS retention schedule in Financials.

**16 HR - Patching - HR 2018 Fall**

Oracle delivered patching.

**17 HR - Performance Reviews/ePerformance/Upload from Excel to PS (DI Obj9.4)**

One of the Data Inconsistencies objectives.

**20 HR - Attachments/Notes/Comments (DI Obj 7.1)**

One of the Data Inconsistencies objectives.

**24 HR - Patching - HR 2019 Spring**

Oracle delivered patching.

**41 HR - HighPoint Mobile for HR update**

Need to keep the mobile app up to date for security reasons (at a minimum).

**72 FIN - 2019 Patching**

Oracle delivered patching.

**25 HR - Patching - HR 2019 Fall**

Oracle delivered patching.

**18 HR - Candidate Gateway/Recruiting Solutions (DI Obj 7.1)**

One of the Data Inconsistencies objectives.

**26 HR - Exit Survey (DI Obj 7.1)**

One of the Data Inconsistencies objectives.

**27 HR - Market Data functionality (DI Obj 7.1)**

One of the Data Inconsistencies objectives.

**28 HR - DNA Replacement**

The identity management system interfaces with PeopleSoft and needs to be replaced. There will be an impact, but we do not know what yet.

**29 HR - PeopleSoft Test Framework (PTF)**

Automated testing for PeopleSoft. This is the last of 3 tools we need that would enable us to more meaningfully test PeopleSoft for patches. We would be able to focus only on testing what has changed in the patch, instead of testing everything cradle-to-grave.

**31 HR - Query Training Documents**

Query training with NDSU was done via an SLA that was not extended. The query training documentation needs to be completed.

**32 HR - Query Training**

Query training needs to be offered and executed.

**33 HR - Review Development Security**

Since we went live with PeopleSoft, we have learned a lot about Row Level security. The custom development work that we have done should be reviewed to make sure that we're securing the data as it should be secured. (New items should be secure.)

**34 HR - Activity Guides**

Activity Guides are a feature that was delivered in PeopleTools. We would like to investigate how they work and deploy them in places that it makes sense for end-users. (step by step guide to accomplish something)

**35 HR - Pivot Grids**

Pivot Grids are an excel-like feature that was delivered in PeopleTools. We would like to investigate how they work and deploy them in places that it makes sense for end-users.

**36 HR - Related Content**

Related content is a feature that was delivered in PeopleTools. We would like to investigate how they work and deploy them in places that it makes sense for end-users.

**37 HR - Budget Module additional changes**

There are a couple fixes desperately needed in the budget module...fix the issues with employees changing from hourly to contract or annual, and reorganizations are two of the top ones. Writing documentation to help the other techs understand the budget module design is still needed.

**67 FIN - Post-PEPP Cleanup**

When we split the HE and State databases in 2012, all of the state development work was left in our system. The goal is to clean it up.

**68 FIN - Query Training Documents**

Query training with NDSU was done via an SLA that was not extended. The query training documentation needs to be completed.

**69 FIN - Query Training**

Query training needs to be offered and executed.

**70 FIN - Review Development Security**

Since we went live with PeopleSoft, we have learned a lot about Row Level security. The custom development work that we have done should be reviewed to make sure that we're securing the data as it should be secured. (New items should be secure.)

**71 FIN - PeopleSoft Test Framework (PTF)**

Automated testing for PeopleSoft. This is the last of 3 tools we need that would enable us to more meaningfully test PeopleSoft for patches. We would be able to focus only on testing what has changed in the patch, instead of testing everything cradle-to-grave.

**73 CS - DNA Replacement**

The identity management system interfaces with PeopleSoft and needs to be replaced. There will be an impact, but we do not know what yet.

**79 CS - High Point Mobile**

Need to keep the mobile app up to date for security reasons (at a minimum).

**83 CS - FA Records Archiving**

Archiving the Financial Aid records to keep the database table sizes manageable.

**85 CS - SF Records Archiving**

Archiving the Student Financials records to keep the database table sizes manageable.